



## Hertford Mews, Billy Lows Lane, Potters Bar, Hertfordshire, EN6 1XW

**£199,950**

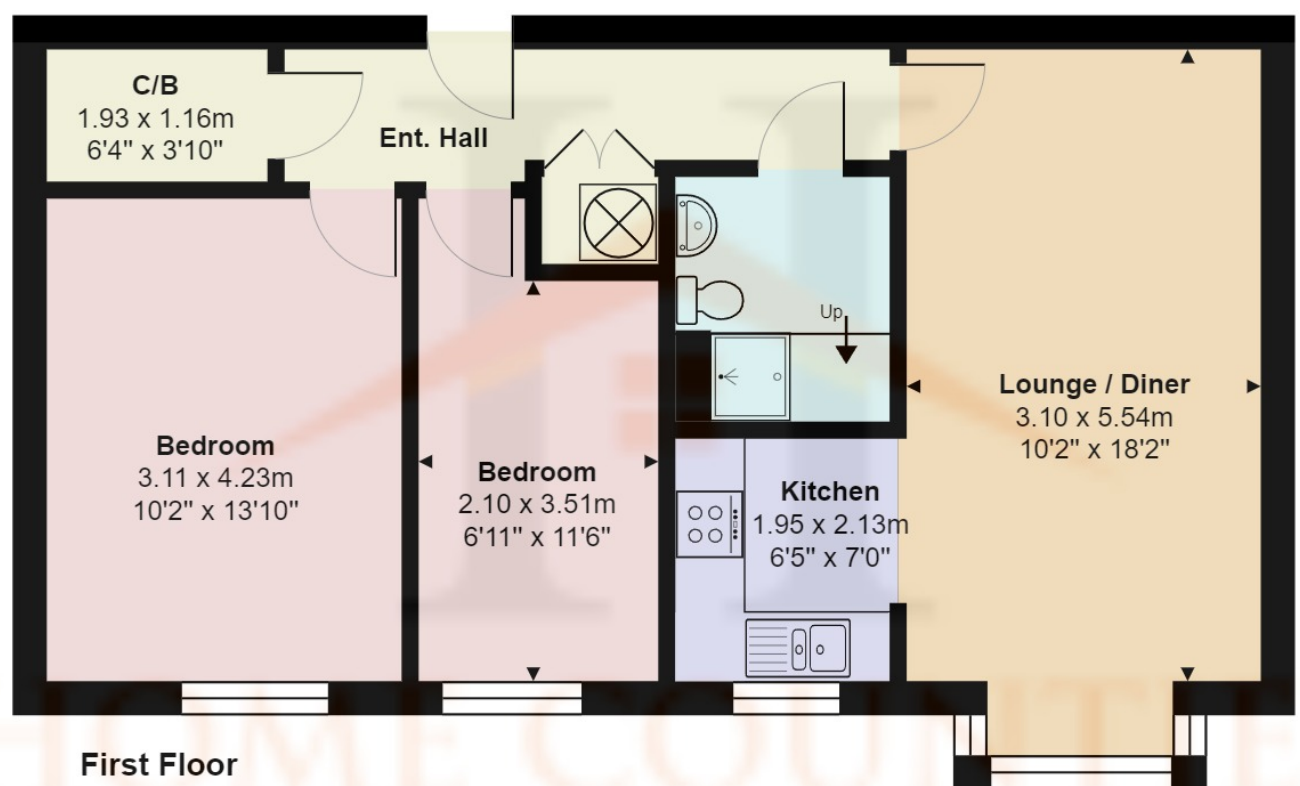
- CHAIN FREE
- WARDEN ASSISTED
- AWARD WINNING GARDENS
- PARKING
- WALKING DISTANCE TO DOCTORS
- TWO BEDROOM RETIREMENT FLAT
- LIFT
- COMMUNAL LOUNGE
- MOMENTS FROM POTTERS BAR HIGH STREET
- LAUNDRY ROOM

# Hertford Mews, Billy Lows Lane, Potters Bar, . EN6 1XW

## £199,950 Leasehold

This spacious two bedroom first floor retirement flat is situated in Hertford Mews, moments from Potters Bar High Street and Parkfield Open Space. The property is offered chain free and in good decorative order throughout, with spacious lounge dining room, separate kitchen, two bedrooms and shower room and entrance hallway with two separate storage units.

The retirement block features award winning communal gardens, parking, lift, large communal room with social activities, laundry room and is warden assisted with an in house site manager. Rooms have pull cords for assistance and there is an overnight guest suite available on request.



## Hertford Mews, Hertfordshire EN6

Total Area: 60.0 m<sup>2</sup> ... 646 ft<sup>2</sup>

All measurements are approximate and for display purposes only



Energy Efficiency Rating		Current	Potential
Very energy efficient - lower running costs			
(92+)	<b>A</b>		
(81-91)	<b>B</b>		
(69-80)	<b>C</b>	79	86
(55-68)	<b>D</b>		
(39-54)	<b>E</b>		
(21-38)	<b>F</b>		
(1-20)	<b>G</b>		
Not energy efficient - higher running costs			
England, Scotland & Wales		EU Directive 2002/91/EC	

