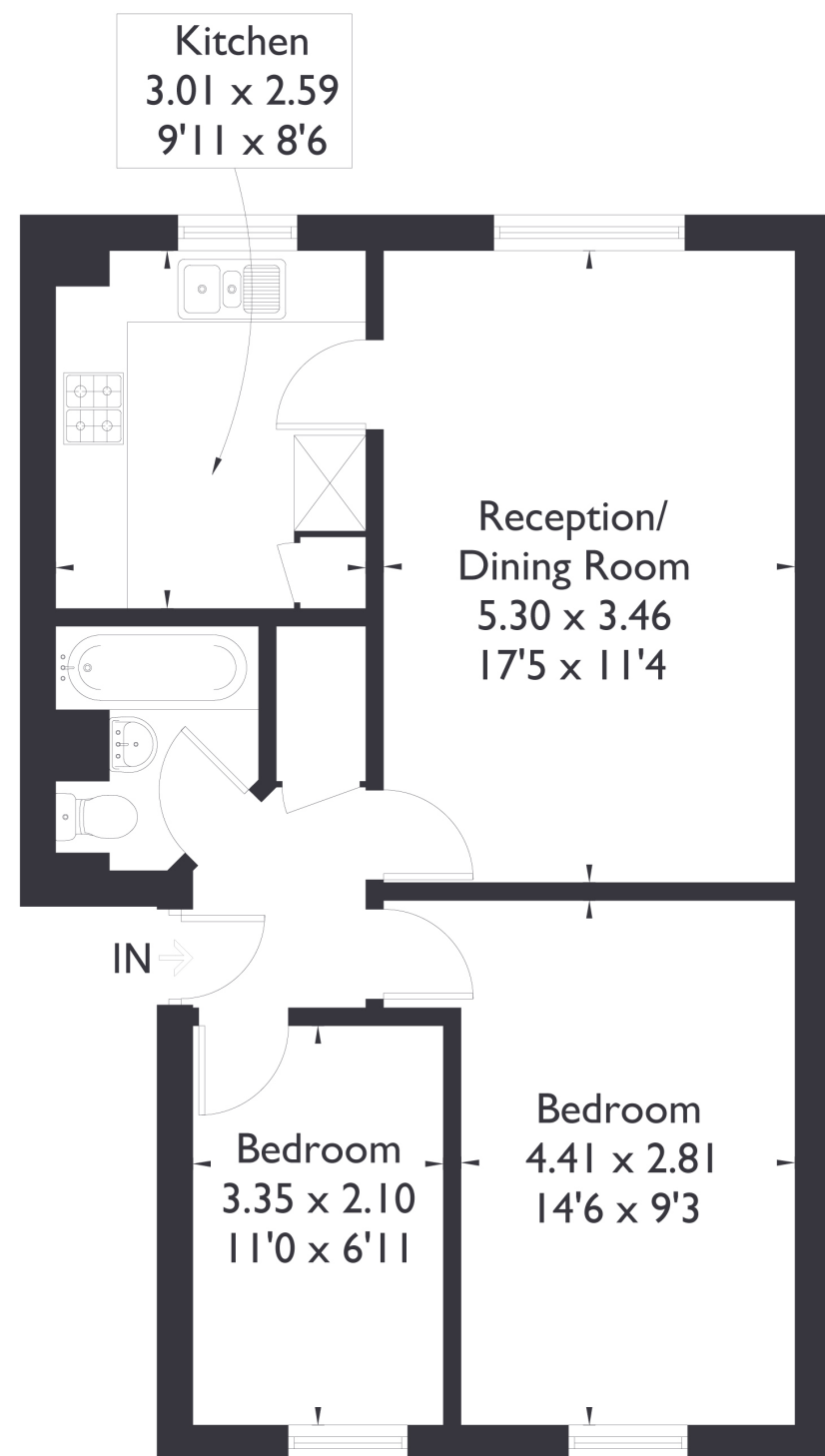




Azalea Close, W7

Approximate Floor Area = 55.8 sq m / 601 sq ft



Second Floor



2 BEDROOM FLAT

Azalea Close, W7

£299,950

Welcome to this fantastic two-bedroom, one-bathroom flat perfectly positioned in the heart of Hanwell.

Ideally located for easy access to both Hanwell and West Ealing's local amenities, this well-presented property offers a fantastic opportunity for first-time buyers or investors alike.

FEATURES

- Two Bedrooms
- One Bathroom
- Separate Kitchen/Living
- Communal gardens
- Hanwell Station (Elizabeth Line)/
West Ealing Station (Elizabeth Line)
- Parking Available
- EPC Rating B



2 BEDROOM FLAT

Azalea Close, W7

£299,950

Offered with no onward chain, the home features communal gardens to the rear and the added benefit of available parking, making it a convenient choice for young professionals or small families.

Situated just a 10-minute walk from both West Ealing and Hanwell stations, the property enjoys excellent connectivity via the Elizabeth Line, offering quick and easy access into Central London and beyond. EPC Rating B.