







- Detached Bungalow
- Three Reception Rooms
- Fitted Kitchen
- Three Bedrooms
- Bathroom
- Private Rear Garden
- Driveway & Garage

### Description

A well presented, detached true bungalow, occupying a sought after village location. The property boasts well proportioned rooms and has been extended to the rear and the roof has recently been overhauled. Warmed by gas central heating and double glazed windows, the accommodation comprises: Entrance hall and inner hall, lounge, dining room, garden room, fitted kitchen, three bedrooms and bathroom. Outside there is an open plan, low maintenance front garden, a block paved driveway, which leads to an attached single garage and to the rear there is a well established and private garden.





**Location**

Moulton is a small village located on the southern outskirts of Northwich. Village amenities include a local Morrisons Daily supermarket and post office, there are two pubs, The Red Lion and Travellers Rest and there is a Royal British Legion Social Club. The village primary school is Ofsted rated good with outstanding features. The local high school is The Country High School, Leftwich, which is also Ofsted rated outstanding. The A556 and A49 easily facilitate access to the region’s major road network with Manchester and Liverpool airports both within 20 miles. Nearby Northwich caters for a more comprehensive range of amenities, including leading supermarkets with Waitrose, Sainsbury's and Tesco all represented.

**Tenure**

FREEHOLD

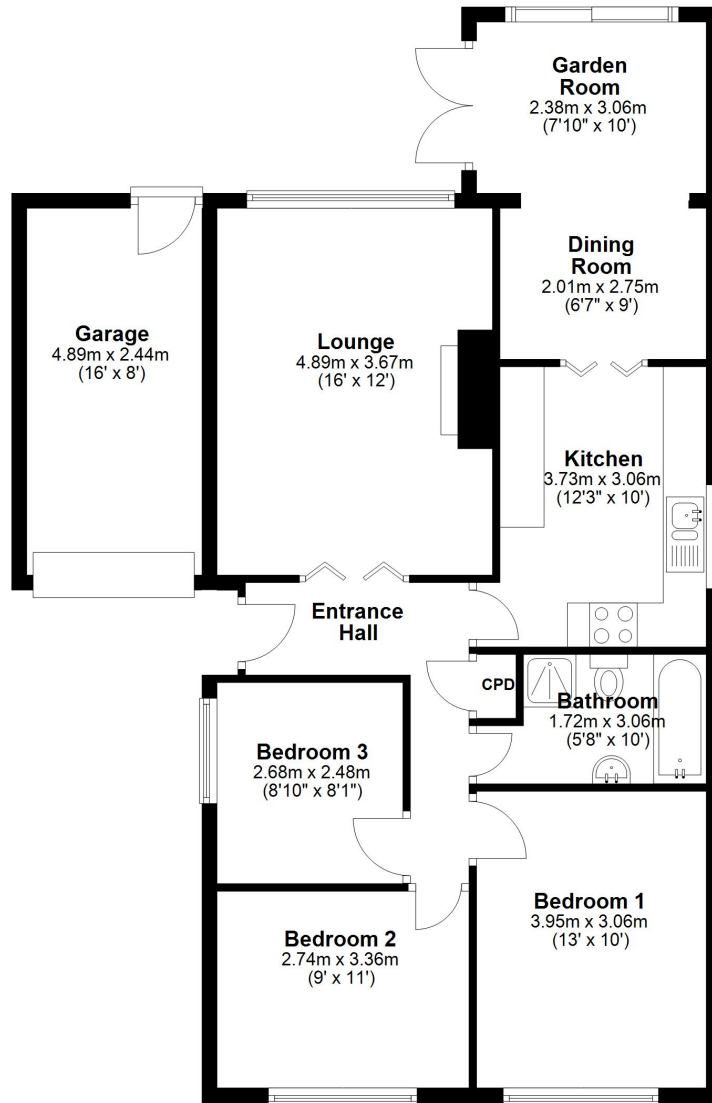
**EPC Rating:**





## Ground Floor

Main area: approx. 84.4 sq. metres (908.1 sq. feet)  
Plus garages, approx. 11.9 sq. metres (128.1 sq. feet)



Main area: Approx. 84.4 sq. metres (908.1 sq. feet)  
Plus garages, approx. 11.9 sq. metres (128.1 sq. feet)



Williams Estates is the trading name of Williams Estates (Ltd). Registered address 33, The Green, Hartford, Northwich, Cheshire, CW8 1QA.

Reg number 07682683. Director Andrew P Williams