





Apartment 1901 Hurlock Heights, Deacon Street, Elephant and Castle. SE17 1GE
£860,000 - Leasehold



PROPERTY DESCRIPTION

A contemporary and modern two-bedroom apartment located on the 19th floor in Hurlock Heights, Elephant Park. Spanning an approximate 847 square feet, this apartment comprises of bright living area with floor to ceiling windows, a bespoke finish modern fitted kitchen with integrated appliances and a large private balcony leading out from the living area and providing exceptional views across London.

This well-presented luxury apartment also offers two generously sized bedrooms including a well-finished en-suite in the master bedroom as well as fitted wardrobe. The property also includes a three-piece family bathroom across the hall, ample storage space and is neutrally decorated throughout.

Hurlock Heights is located in Elephant Park and offers residents, 24-Hour Concierge and resident's gym. This development is surrounded by several local amenities such as, restaurants, bars and cafes in Elephant and Castle Shopping Centre. This modern development is situated within a short walk away from Elephant and Castle Underground Station and National Rail services towards Central London and the West End. Resident's are surrounded by ample transport links.

KEY FEATURES

- Two Bedroom
- Two Bathroom
- 19th Floor
- 847 Square Feet (Approx.)
- Modern and Luxury
- Private Balcony
- Bespoke Fitted Kitchen
- 24-Hour Concierge and Resident's Gym
- Close Proximity To Local Amenities
- Elephant & Castle Underground Station and National Rail Services

ADDITIONAL INFO

Lease length:

250 Years From 2016

Service Charge:

£3,725.46 (Estimated) Per Annum

Ground Rent:

£500.00 (Estimated) Per Annum

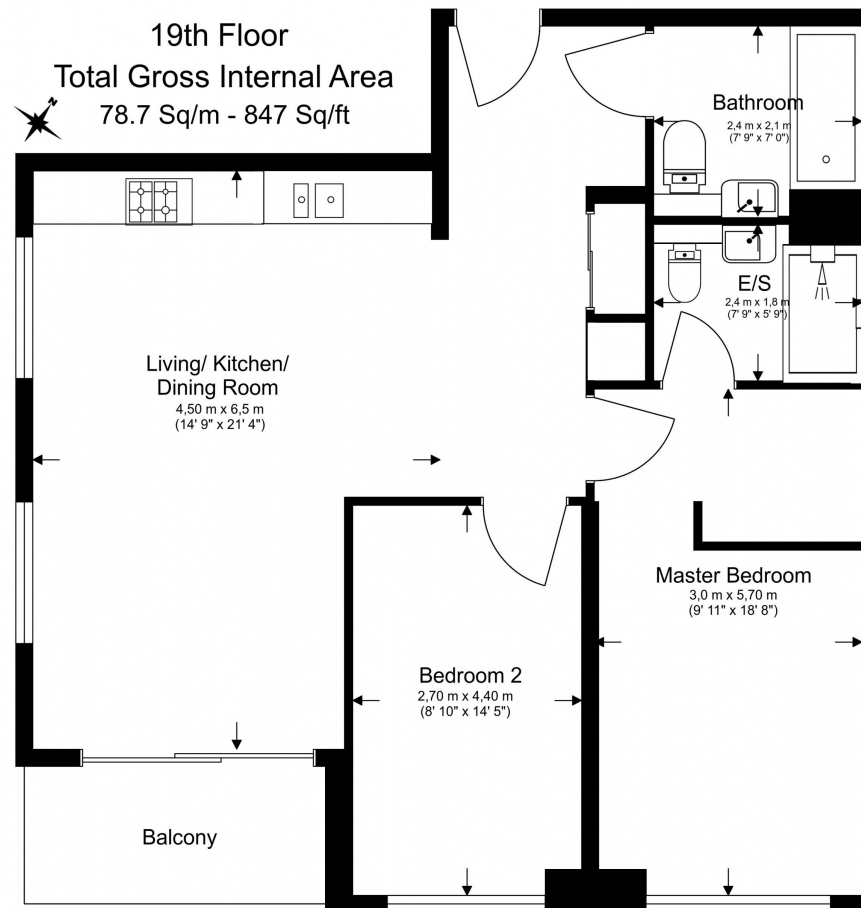
Yield:

3.75% (Estimated)

LOCAL AUTHORITY

Southwark
Council Tax Band - E

Energy Efficiency Rating		
	Current	Potential
Very energy efficient - lower running costs		
(92-100) A		
(81-91) B	85	85
(69-80) C		
(55-68) D		
(39-54) E		
(21-38) F		
(1-20) G		
Not energy efficient - higher running costs		
England, Scotland & Wales		EU Directive 2002/91/EC



Floor Plan measurements are approximate and are for illustrative purposes only. While we do not doubt the floor plans accuracy, we make no guarantee, warranty or representation as to the accuracy and completeness of the floor plan.