

TO
LET

Laurence Mews,
Askew Village, W12

Mews House
Askew Village

£2,900 pcm

3  2  1 

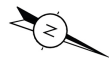
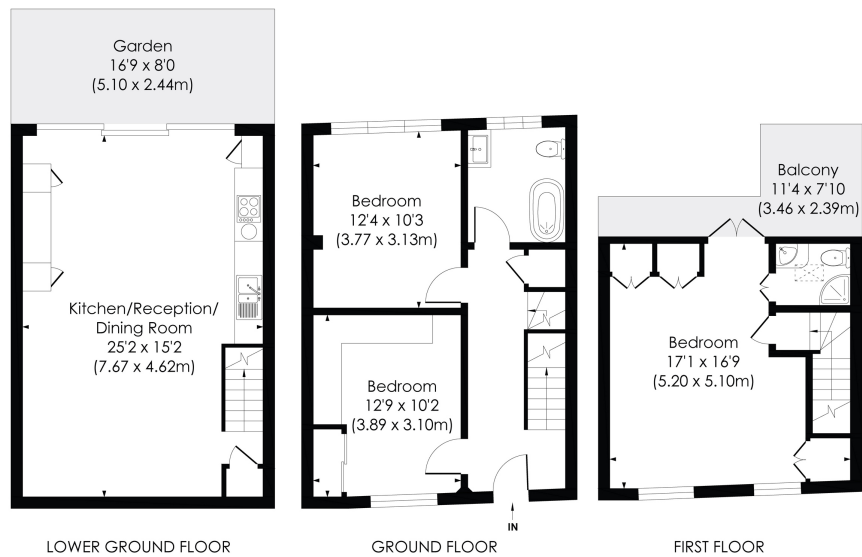


**horton
andgarton**

SALES / LETTINGS / PROPERTY MANAGEMENT

hortonandgarton.co.uk | Sales 020 8819 0510 | Lettings 020 8819 0511
172 King Street, Hammersmith, W6 0QU





LAURENCE MEWS, W12

Approx. Gross Internal Floor Area
1098 Sq' / 101.98 SqM

**horton
andgarton**

© Pixangle Property Marketing Ltd. info@pixangle.com Tel: 0208 870 2118

This floor plan has been prepared for the purpose of illustration only in accordance with the latest RICS code of measuring practice and is not to scale. All measurements and areas are approximate and whilst every effort has been made to ensure the accuracy of the plan contained here, no responsibility is taken for any error, omission or misstatement.



Three bedrooms - Two bathrooms | Mews house |
Private garden and balcony | Fantastic condition
throughout | EPC rating C | Askew Village



hortonandgarton.co.uk
Sales 020 8819 0510
Lettings 020 8819 0511

172 King Street, Hammersmith, W6 0QU