



Sherwood Lodge, Brunstead Road, Poole BH12 1EJ

About the Property

The apartment is offered unfurnished and features a welcoming entrance hall with ample built-in storage, leading to a generous lounge and dining area that leads to a private decked balcony overlooking the communal green. The well-appointed fitted kitchen, with a integrated fridge/freezer, gas hob, oven and washing machine, provides plenty of workspace and storage. The master bedroom benefits from a built-in cupboard and en-suite shower room, while the second bedroom is serviced by a separate modern bathroom with a shower over the bath.

Additional benefits include gas central heating, double glazing, and an entry phone system for added security. The property also comes with its own garage, visitor off-road parking on a first come first serve basis, and additional on-road parking. With its excellent location and well-designed layout, internal viewing is highly recommended to fully appreciate what this property has to offer.

Situated in a highly popular and sought-after area within easy walking distance of Westbourne village providing an eclectic mix of bars, excellent restaurants and cafes alongside a selection of exclusive boutiques and independent shops. Alum Chine is also within walking distance, offering seven miles of award-winning, blue-flag, sandy beaches. Also conveniently located to give easy access to the dual carriageway and excellent public transport links.

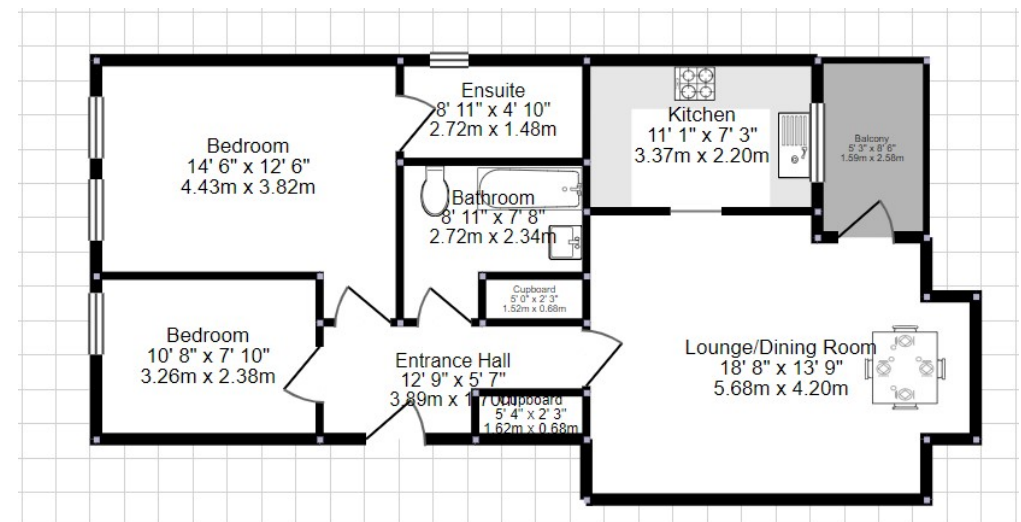
Mays Residential Lettings are members of ARLA Propertymark.

Our Client Money Protection is supplied by Propertymark Client Money Protection Scheme.

Mays are part of the Property Ombudsman Scheme TPO - DO3138

Key Features

- Two bedroom top floor apartment
- Two bathrooms (one en-suite)
- Fitted kitchen with appliances
- Ample storage
- Situated close to Bournemouth gardens and Westbourne village
- Private decked balcony
- Generous living room
- Garage
- Gas central heating and double glazing
- Unfurnished







About Mays

We understand that property is a people business, and pride ourselves on having a diverse and multi-talented team of property professionals.

We have been successfully selling and letting property for more than 30 years, and our wealth of local knowledge combined with our experience in both the London market and overseas property, means our team can handle anything that comes their way.

Our reputation is a result of the unsurpassed level of service we offer and importantly the results we achieve for our clients. Our ethos is to 'Bring People and Property Together', after all it's what we've been doing so well for so long.

MAYS
ESTATE AGENTS

Mays Estate Agents - LETTINGS

290 Sandbanks Road, Poole, Dorset BH14 8HX

T: 01202 709888

E: lettings@maysestateagents.com

www.maysestateagents.com

Mays Residential Lettings are members of ARLA Propertymark.
Our Client Money Protection is supplied by Propertymark Client Money Protection Scheme.
Mays are part of the Property Ombudsman Scheme TPO - DO3138

