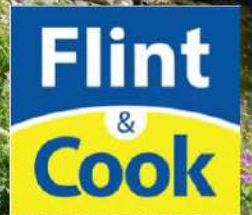




Home Farm Barn

Burghill, Hereford
HR4 7RJ



Home Farm Barn, Burghill, Hereford HR4 7RJ

An outstanding detached barn conversion, in an exclusive rural location with an adjoining self-contained annexe (ideal for multi-generational living), double garage with delightful gardens and former Cattle Byre.

Home Farm Barn presents an unique opportunity for multi-generational living, Air BNB or as one substantial residence (about 4,000 sq. feet). The property is located on the edge of a Conservation Area just outside the highly favoured village of Burghill, just 4 miles northwest of the Cathedral City of Hereford.

Within Burghill/Tillington there is a shop, public house, community centre, cricket club, church and 18-hole golf course (there is a further 18-hole golf course at nearby Wormsley - The Herefordshire).

The barn was originally converted in the 1980's and has recently been upgraded and offers a wealth of character with exposed timbers and an oak spiral staircase together with double glazing and gas central heating.

One of the main benefits of the extensive accommodation is its versatility as a single substantial residence but which also incorporates a two-storey self-contained annexe (ideal for a relative, Air BNB etc).

There are lovely, private gardens with storage and an entertainment area together with a double garage.

Ground floor

Recessed Porch

With flagstone flooring and door to the

Impressive Reception Hall

With slate tiled floor, oak spiral staircase, full length panelled glazed windows, radiators and cloaks cupboard.

Cloakroom

With wash hand-basin, WC, radiator.

Lounge

With woodburning stove with stone surround, two radiators, windows to front and rear.

Kitchen/Lounge/Dining Area

Range of fitted base and wall units, worksurfaces with splashbacks, oil fired AGA, plumbing for dishwasher, sink unit, built-in electric oven, induction hob, built-in microwave, windows to front and rear and french doors to front, cupboard housing the gas fired central heating boiler.

First floor

Landing

Full height ceiling, exposed timbering and radiator.

Master Bedroom

Radiator, two windows and an archway to the Dressing Room with radiator, windows, built-in wardrobe, storage cupboard and window with a lovely outlook over fields

and the En-suite Bathroom with two Velux windows and white suite with bath, mixer tap, separate tiled shower cubicle, wash hand-basin with cupboard under, WC, radiator and connecting door to the Annexe.

Bedroom 2

Built-in wardrobe, radiator, window to front.

Bedroom 3

Built-in wardrobe, radiator, hatch to roof space, windows to rear.

Bathroom

Wash hand-basin, WC, separate tiled shower cubicle, radiator, window to rear garden.

SELF-CONTAINED ANNEXE with door into the Entrance Hall

With radiator, entrance door to front.

Utility

Fitted base and wall mounted units with sink, worksurface, plumbing for washing machine, window to rear, radiator.

Living Room

Radiator, double doors to the front.

Shower Room

Double width shower cubicle with mains fitment, wash hand basin with cupboard under, WC, radiator, window.

Kitchen/Dining/Living Room

Breakfast bar, range of fitted base and wall units, sink, plumbing for dishwasher, rangemaster oven and hob, 2 built-in storage cupboards, radiator, windows to the front and rear.

Staircase leads from the Entrance Hall to the

First Floor Gallery-style Landing

With two radiators and a Velux window to the front.

Shower Room

With WC, bidet, wash basin and walk-in shower unit.

Bedroom 4

Velux Window., radiator and built-in wardrobes.

Bedroom 5

Radiator, window to front, Velux window to rear and lockable door.

Outside

The property is approached via a private driveway and there is a wooden 5-bar gate leading to a gravelled parking and turning area with a brick-paved area to the front of the DOUBLE GARAGE with electric up-and-over door, light and power.

The delightful gardens lie predominantly to the western side of the property and are enclosed (part-walled), attractively landscaped with a variety of shrubs and trees, an ornamental pond, raised beds and patio areas. An attractive feature is the former Cattle Byre with original feeding racks and this incorporates a LARGE WORKSHOP.

Agents Note

To the southern side of the property there is a **Building Plot** with detailed planning permission for a detached 3 bedroom cottage (application no 231477) which is available for purchase by separate negotiation (see agents for further details).

General information

Services

Mains water, electricity, drainage and gas are connected. Telephone (subject to transfer regulations). Gas-fired central heating.

Outgoings

Council tax band G.

Water and drainage - rates are payable.

Price - £795,000

Tenure & possession

Freehold - vacant possession on completion.

Directions

From Hereford proceed initially towards Brecon on the A438 and, at the main Whitecross roundabout take the 3rd exit onto the A4110 towards Knighton (Three Elms Road) and continue past the Three Elms public house and, at the traffic lights, turn left, then turn right as signposted Burghill and Tillington. Continue past the entrance to St Mary's Park and after an additional half a mile, turn right for Burghill Village. Continue down the hill where the property is located on the left hand side (access to the property is immediately before the sign for Home Farm Barns). What3words - order.uttering.dogs

Viewing

Strictly by appointment through the Agent, Flint & Cook, Hereford (01432) 355455.

Money laundering regulations

Prospective purchasers will be asked to produce identification, address verification and proof of funds at the time of making an offer.

Opening hours

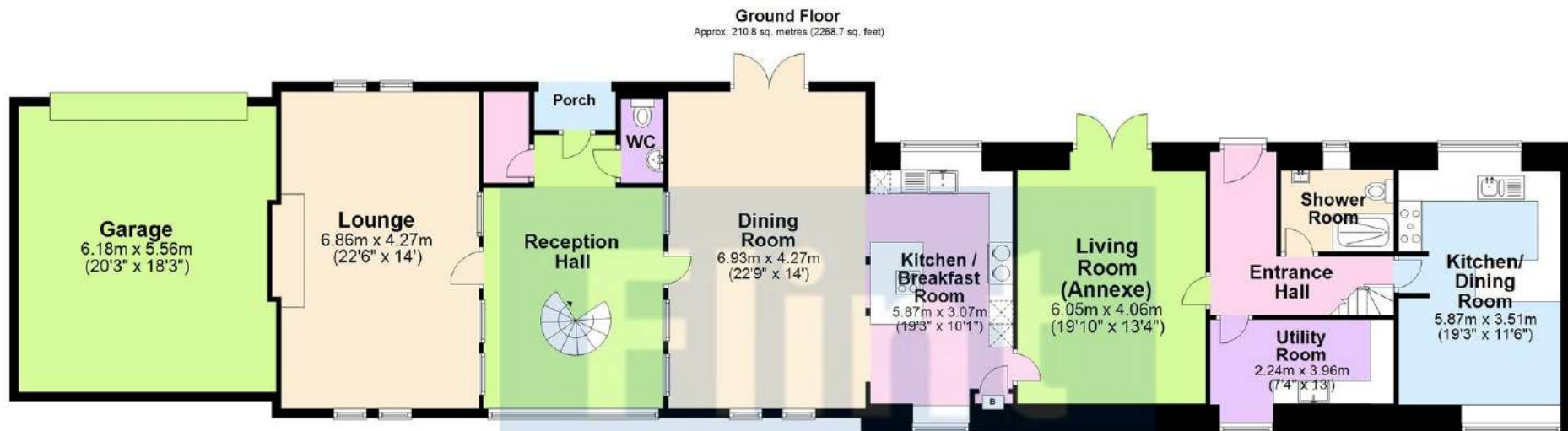
Monday - Friday 9.00 am - 5.30 pm

Saturday 9.00 am - 1.00 pm

JRC FC006564 March 2025 (1)







Total area: approx. 368.2 sq. metres (3962.9 sq. feet)

This plan is for illustrative purposes only
Plan produced using PlanUp.

Score	Energy rating	Current	Potential
92+	A		
81-91	B		
69-80	C		75 C
55-68	D	58 D	
39-54	E		
21-38	F		
1-20	G		



These particulars are prepared for the guidance only of prospective purchasers. They are intended to give a fair and overall description of the property and do not constitute the whole or any part of an offer or contract. Any information contained herein (whether in text, plans or photographs) is given in good faith but should not be relied upon as being a statement or representation of fact. Nothing in these particulars shall be deemed to be a statement that the property is in good condition or otherwise nor that any services or facilities are in good working order. Any movable contents, fixtures and fittings, (whether wired or not) referred to in these property particulars (including any shown in the photographs) are, unless the particulars say otherwise, excluded from the sale. In the event that the buyer proposes to purchase any movable contents or include them in any offer for the property, the buyer cannot in any respect imply any such inclusion from the property particulars. Any areas, measurements or distances referred to herein are approximate only and may be subject to amendment. It should not be assumed that the property has all necessary planning, building regulation or other consents and these matters must be verified by an intending purchaser. The information in these particulars is given without responsibility on the part of the agents or their clients and neither the agents nor their employees have any authority to make or give any representations or warranties whatever in relation to this property.