



Two Bedroom Apartment
Dunlin Drive, Chatham, Kent, ME4 3JA

£1,350 pcm
Freehold

Dunlin Drive, Chatham, Kent, ME4 3JA

£1,350 pcm

Freehold

Description

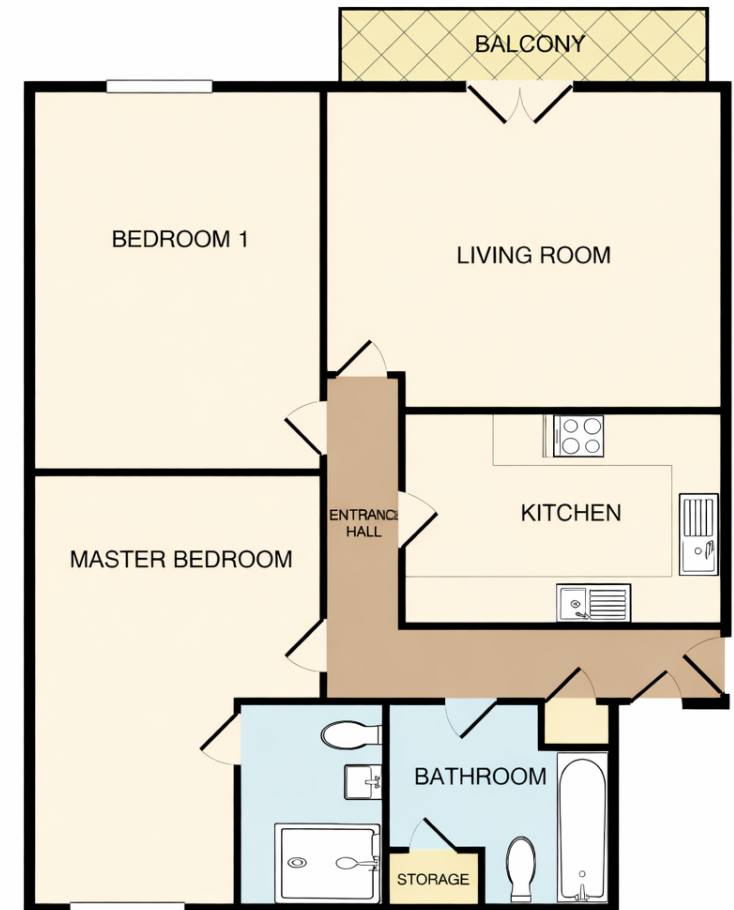
AVAILABLE TO LET is this well-presented two-bedroom apartment located in the highly sought-after St Mary's Island development, offering modern living in a peaceful and well-connected setting. The property welcomes you into a spacious entrance hall leading through to a bright and airy living room, ideal for both relaxing and entertaining. French doors open onto a private balcony, providing an attractive outdoor space and allowing plenty of natural light to flow through the apartment. The modern fitted kitchen sits conveniently alongside the living area and offers ample storage and workspace, perfect for day-to-day living. There are two generously sized double bedrooms, both finished to a good standard. The master bedroom benefits from its own en-suite, creating a comfortable and private retreat, while the second bedroom is well suited for guests, sharers, or use as a home office. A contemporary family bathroom and useful internal storage further enhance the practicality of the home. Situated close to local amenities, riverside walks, and transport links, this property is ideal for professionals, couples, or small families looking to enjoy a quiet residential environment without compromising on convenience. Homes of this quality and location are rarely available for long — early viewing is strongly recommended.

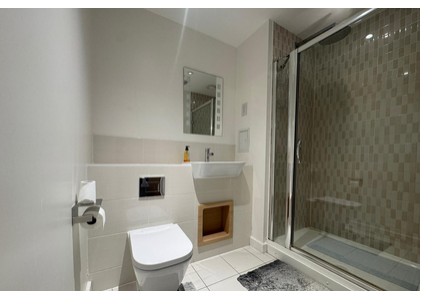
Key Features

- Two-bedroom apartment located on the popular St Mary's Island development
- Spacious and well-designed layout throughout
- Modern fitted kitchen with ample storage and worktop space
- Master bedroom with en-suite bathroom
- Second good-sized double bedroom, ideal for guests or home office use
- Contemporary family bathroom
- Peaceful residential location with riverside walks nearby Close to local amenities and transport links
- Ideal for professionals, couples, or small families

Local Area

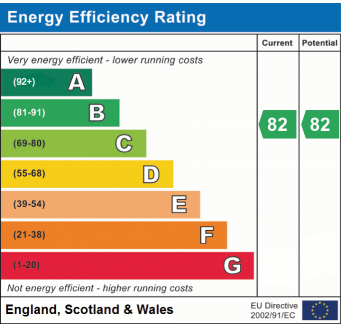
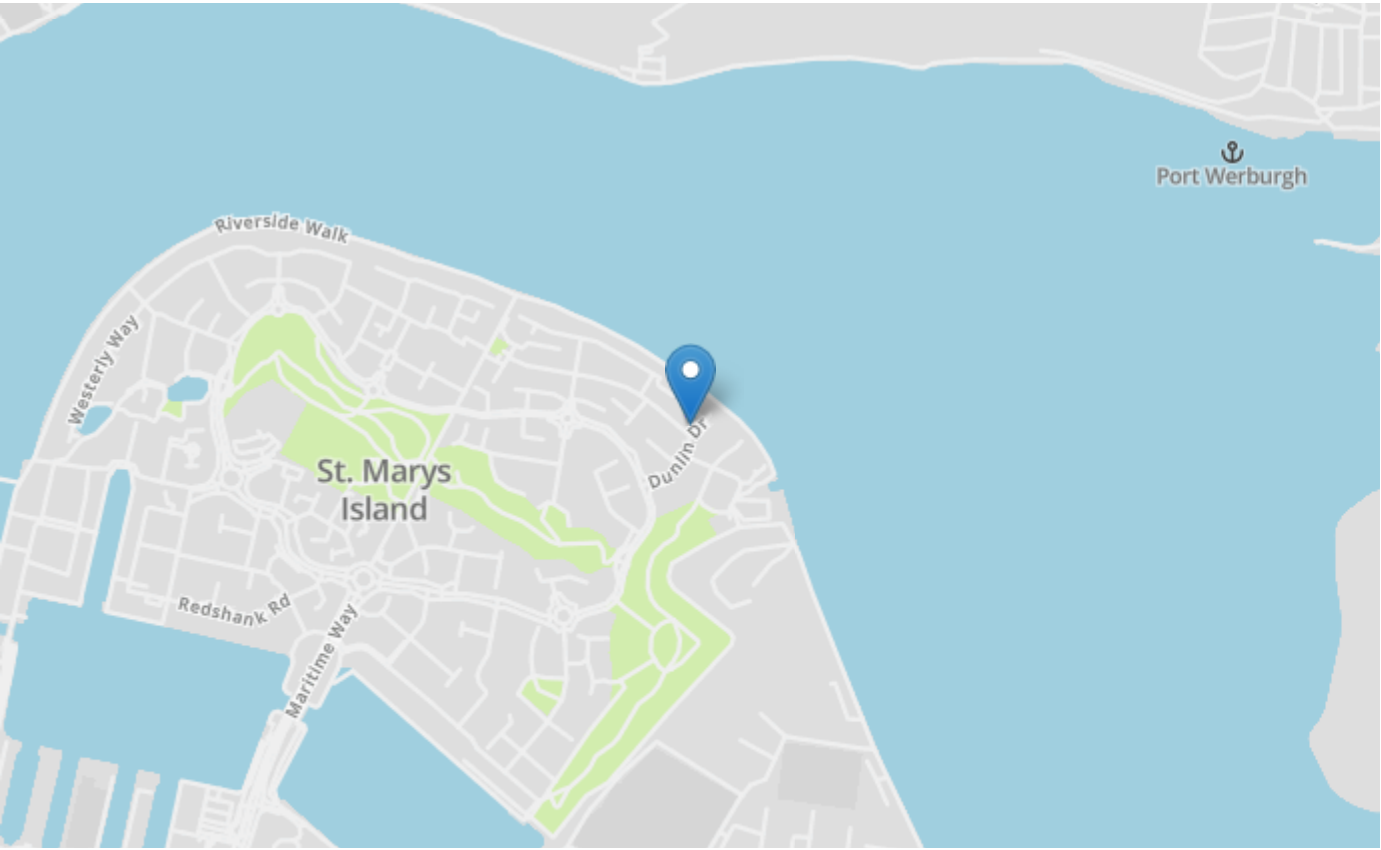
Situated within the highly desirable St Mary's Island, Dunlin Drive offers a peaceful waterside setting while remaining conveniently connected. The area is well known for its attractive riverside walks, green spaces, and community feel, making it popular with professionals and families alike. Local amenities, including shops, cafés, and schools, are within easy reach, while nearby bus routes provide straightforward access to Chatham town centre and surrounding areas. Chatham railway station offers direct services into London, making this an ideal location for commuters seeking a balance between tranquil living and everyday convenience.





Property Location

Dunlin Drive, Chatham, Kent, ME4 3JA



Tenure	Freehold
Lease Term	N/A
Ground Rent	N/A
Service Charge	N/A
Local Authority	Medway Council
Council Tax	Band D

haus Estate Agents

26, London Road
Gillingham
Kent
ME8 6YX
Tel: 01634 848883 Email:
hello@haustateagents.co.uk

Agent Notes
These particulars do not form part of an offer or contract and must not be relied upon as statements or representation of fact. The seller does not make or give nor do our employees or haus Estate Agents have authority to make or give any representation or warranty to the property. It should not be assumed that the property has all necessary planning, building regulation or other consents and we have not tested any services, equipment, or facilities. All photographs, measurements, floorplans and distances referred to are given as a guide only and should not be relied upon for the purchase of carpets or any other fixtures or fittings. References to tenure, service charges and ground rent (where applicable) as well as council tax are based on information supplied by the seller. The Buyer should verify all information themselves by inspection or otherwise prior to a legal commitment to purchase. The copyright of all details, photographs and floorplans remains exclusive to haus Estate Agents. If you require clarification or further information on any points, please contact us, especially if you are travelling some distance to view.