

53 Courts Barton,

Frome, BA11 4QA

COOPER
AND
TANNER



OIRO £240,000 Freehold

A perfect starter home - this lovely two-bedroom mid-terrace house is well positioned on a quiet cul-de-sac on the popular south side of Frome, within easy reach of local facilities and schools.

53 Courts Barton, Frome, BA11 4QA

 2  1  1 EPC C

OIRO £240,000 Freehold

DESCRIPTION

The home benefits from double glazing throughout, off-road parking, a link-detached garage and gas central heating.

The Courts Barton Estate was built between 1983 and 1990 and remains a sought after and popular area with first time buyers, young families and investors. No 53 is a delightful mid-terraced freehold house, set back from the road with a large front garden with established apple and cherry blossom trees.

You enter the property through a small porch, with handy storage before continuing into the main living room, which is bright, airy and tastefully decorated. To the rear of the property is a small kitchen, and the vendors are happy to include several appliances with the purchase, including the impressive gas range cooker. Beyond is a large conservatory, currently used as a dining space, fully plumbed for heating and smartly decorated.

OUTSIDE

The garden has a patioed area, ideal for summer dining/entertaining and has recently had new fencing installed. A rear gate provides bin access around the perimeter of the neighbouring property to the road.

ADDITIONAL INFORMATION

Gas fired central heating. All mains' services are connected.

LOCATION

Frome is a historic market town with many notable buildings and features the highest number of listed buildings in Somerset. Frome offers a range of shopping facilities, a sports centre, several cafés, a choice of pubs, local junior, middle and senior schools, several theatres, and a cinema. Bath and Bristol are within commuting distance, and the local railway station connects at Westbury for London Paddington.

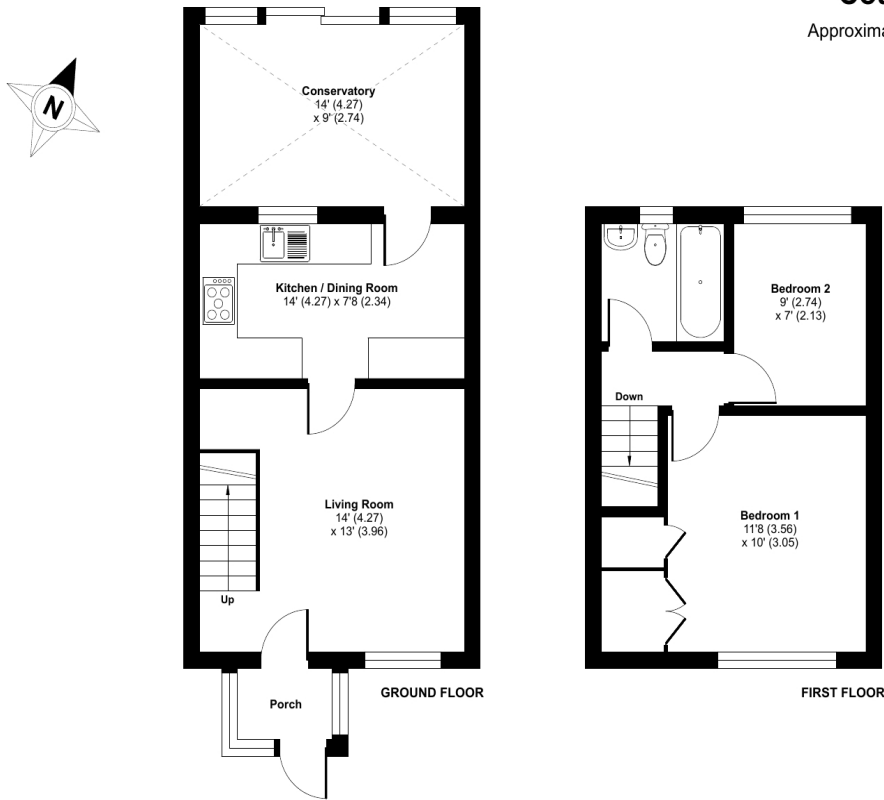




Courts Barton, BA11

Approximate Area = 752 sq ft / 69.9 sq m

For identification only - Not to scale



Certified
Property
Measurer

Floor plan produced in accordance with RICS Property Measurement Standards incorporating International Property Measurement Standards (IPMS2 Residential). ©richecom 2024. Produced for Cooper and Tanner. REF: 1087258



FROME OFFICE

Telephone 01373 455060

6 The Bridge, Frome, Somerset, BA11 1AR

frome@cooperandtanner.co.uk

**COOPER
AND
TANNER**

Important Notice: These particulars are set out as a general outline only for the guidance of intended purchasers and do not constitute, nor constitute part of, an offer or contract. All descriptions, dimensions, reference to condition and necessary permissions for use and occupation, warranties and other details are given without responsibility and any intending purchasers should not rely on them as statements or representations of fact but must satisfy themselves by inspection or otherwise as to the correctness of each of them.

