



81c Woodthorpe Road, Ashford, Surrey, TW15 3JT

WELL PRESENTED & HUGELY SPACIOUS TWO BEDROOM FIRST FLOOR MAISONETTE SITUATED ALONG THIS SOUGHT AFTER ROAD IDEALLY LOCATED WITHIN MOMENTS OF ASHFORD HIGH STREET & MAINLINE TRAIN STATION. The property benefits from a spacious lounge/diner, separate fitted kitchen, two well-proportioned double bedrooms, modern white shower room with separate W.C, private garden to rear, garage and a share of freehold. No Onward Chain. Viewings Highly Recommended!

ROOM DESCRIPTIONS

Covered Porch

With UPVC double glazed door leading to:

Entrance Lobby

Front aspect UPVC double glazed window, light and power points, radiator, laminate wood-style flooring, stairs to first floor.

First Floor

Landing

Side aspect UPVC double glazed window, light and power points, access to loft space and doors to:

Kitchen

Rear aspect UPVC double glazed window, range of fitted units at eye and base level, laminate roll edged worktops, sink drainer unit, built-in double oven with hob and extractor over, space for washing machine and freestanding fridge/freezer, radiator, partly tiled walls, light point.



Lounge/Diner

Rear aspect UPVC double glazed window, light and power points, radiator, electric fireplace and surround.



Bedroom 1

Front aspect UPVC double glazed window, light and power points, radiator.



Bedroom 2

Front aspect UPVC double glazed window, light and power points, radiator, built-in storage cupboard housing wall mounted gas boiler.



Shower Room

Side aspect UPVC double glazed window, tiled shower cubicle, wash hand basin inset to cabinet, radiator, partly tiled walls.



Separate W.C.

Side aspect UPVC double glazed window, low level W.C, light point.

ROOM DESCRIPTIONS

Outside

Rear Garden

Paved garden with shrub borders, enclosed by wood-panel fencing.

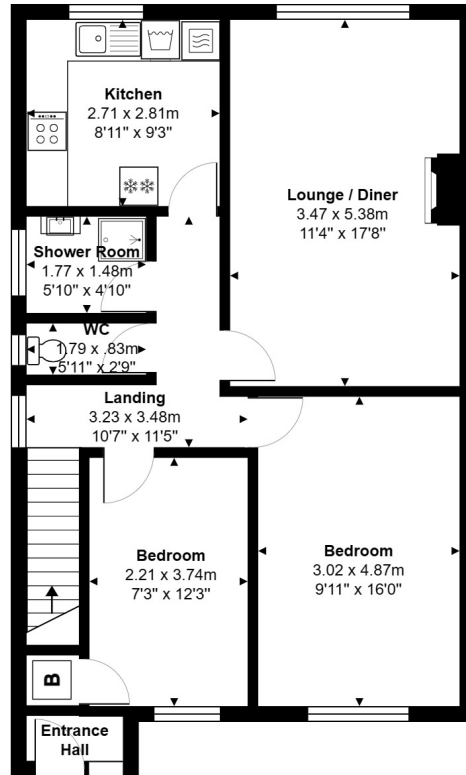


Garage

Situated in block to rear, with metal up and over door.



FLOORPLAN



Ground Floor

Total Area: 68.9 m² ... 742 ft²

All measurements are approximate and for display purposes only.