



83 Shortheath Road, Farnham, Surrey. GU9 8SF.
£700,000

keatsfearn



Description

A charming red brick home with a south facing garden and far reaching views over the Bourne valley. The house is set in a popular residential area, with St Peters school just a 5 minute walk away and Weydon School within a 15 minute walk. Local shops are available in Wrecclesham and at the Ridgway, while Farnham's elegant Georgian town centre is less than 2 miles away. The local area offers numerous beautiful locations for outdoor pursuits including, Bourne Woods, Frensham Ponds, Alice Holt Forest and Farnham Park.

The accommodation includes an entrance hall with cloakroom/w.c., living room, dining room, conservatory, fitted kitchen, three bedrooms and a family bathroom. The house enjoys a large frontage, providing privacy and off road parking for a number of cars, as well as a detached garage. The secluded rear garden is south facing and features a large patio, lawned area, utility/store room and gardeners w.c. There is ample opportunity to extend the house to the rear or the side, subject to the usual consents.

The property benefits from double glazing, gas central heating and all mains services, the water supply is metered.

Directions

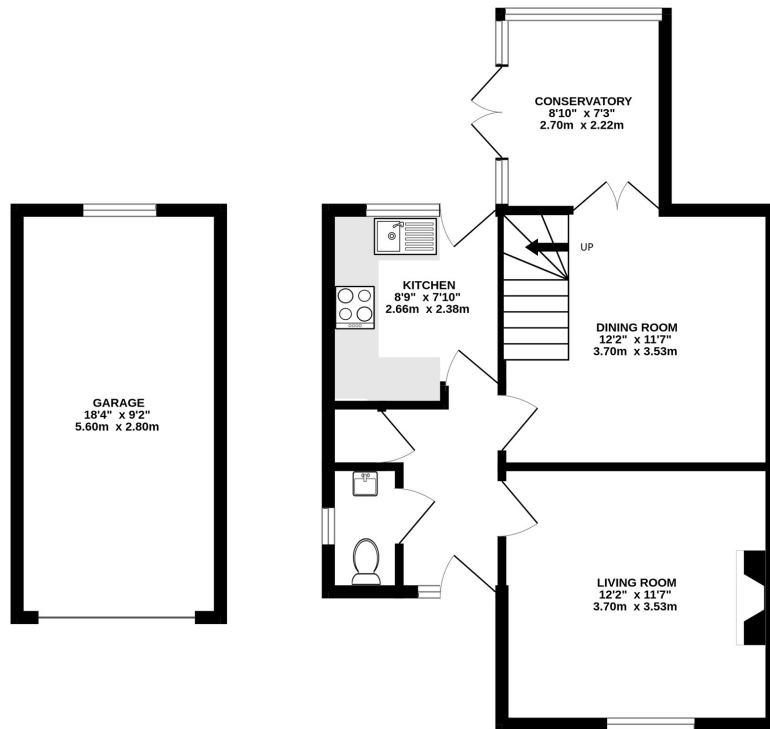
SAT NAV REF: GU9 8SF

Local Authority

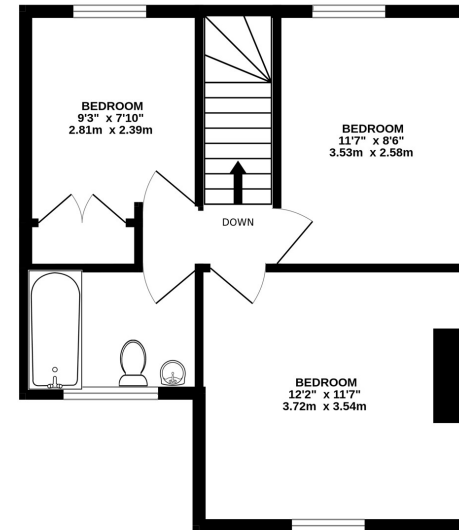
Waverley
Band D



GROUND FLOOR
646 sq.ft. (60.0 sq.m.) approx.

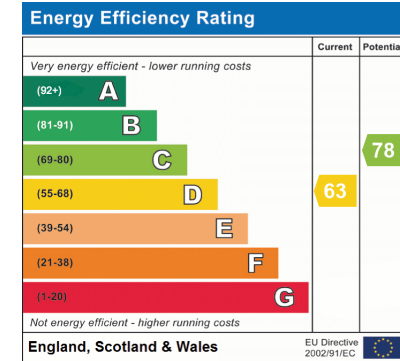


1ST FLOOR
412 sq.ft. (38.3 sq.m.) approx.



TOTAL FLOOR AREA : 1058 sq.ft. (98.3 sq.m.) approx.

Whilst every attempt has been made to ensure the accuracy of the floorplan contained here, measurements of doors, windows, rooms and any other items are approximate and no responsibility is taken for any error, omission or mis-statement. This plan is for illustrative purposes only and should be used as such by any prospective purchaser. The services, systems and appliances shown have not been tested and no guarantee as to their operability or efficiency can be given.
Made with Metropix ©2025



15 Downing Street , Farnham, Surrey, GU9 7PB

Tel: 01252 718018

Email: sales@keatsfearn.co.uk

Web: www.keatsfearn.co.uk

keatsfearn

