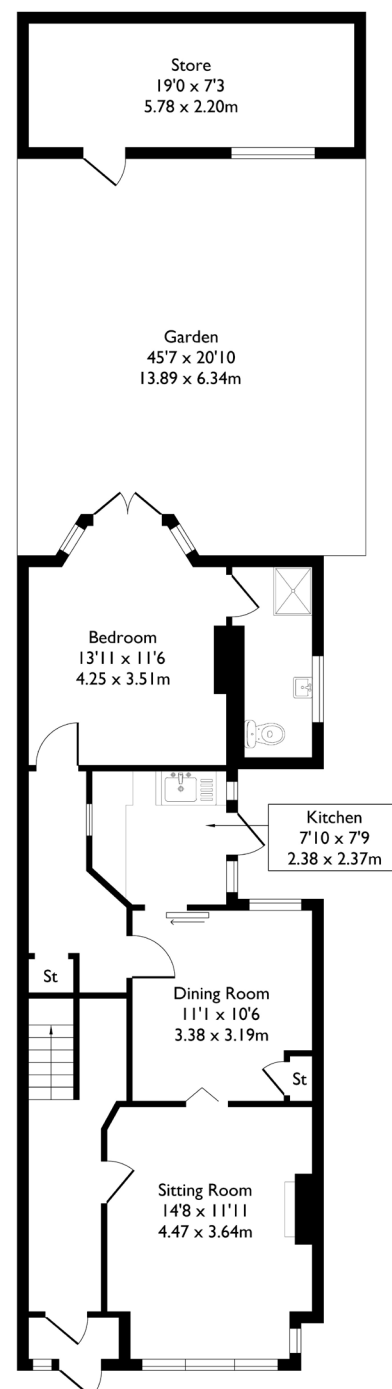
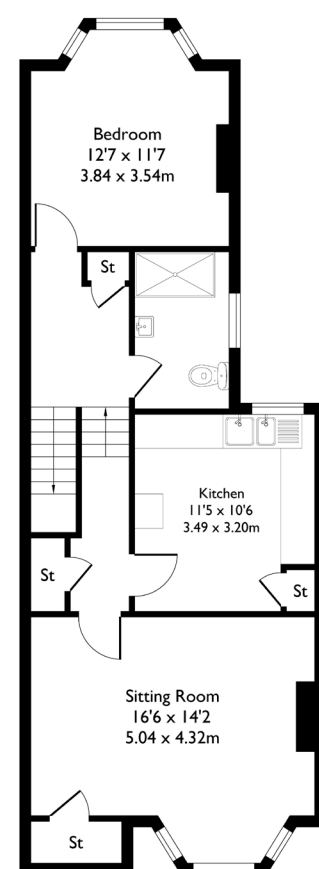


Coldershaw Road, London, W13

Approximate Floor Area = 141.6 sq m / 1525 sq ft



Ground Floor



First Floor



3 BEDROOM HOUSE

Coldershaw Road, W13

£1,050,000

Welcome to this versatile three-bedroom semi-detached property, currently arranged as two self-contained flats.

Offered for sale as a whole, the property presents fantastic potential — whether you choose to convert it back into a single family home or retain the current layout for investment purposes. It features three double bedrooms and offers excellent scope to extend, both into the loft (STPP) and to the rear, creating even more living space.

FEATURES

- Three Bedrooms
- Two Bathrooms
- Potential To Extend (STPP)
- Northfield Amenities
- Fielding Primary School/ Oaklands Primary School
- Northfields Station/ West Ealing Station (Elizabeth Line)
- EPC Rating C



3 BEDROOM HOUSE

Coldershaw Road, W13

Situated just 10 minutes from West Ealing Station, providing direct access to the Elizabeth Line, and within easy reach of Northfields' local amenities, the location is ideal for commuters.

Families will also appreciate being in the catchment area for the sought-after Fielding Primary and Oaklands Primary schools.

EPC Rating C.

