



Musbury Street, London, E1 0PJ

**Cow & Co**  
LONDON





Guide Price: £375,000 - £425,000 A larger than average two double bedroom split level purpose built apartment offering bright and spacious accommodation throughout and direct access onto a private balcony with stunning views across London.

The property benefits from being situated near Stepney Green Underground stations as well as Whitechapel Station with Crossrail potentially providing swift access to The City, West End and Heathrow. The property is close to Shoreditch and Spitalfields with the eclectic mix of bars and restaurants.

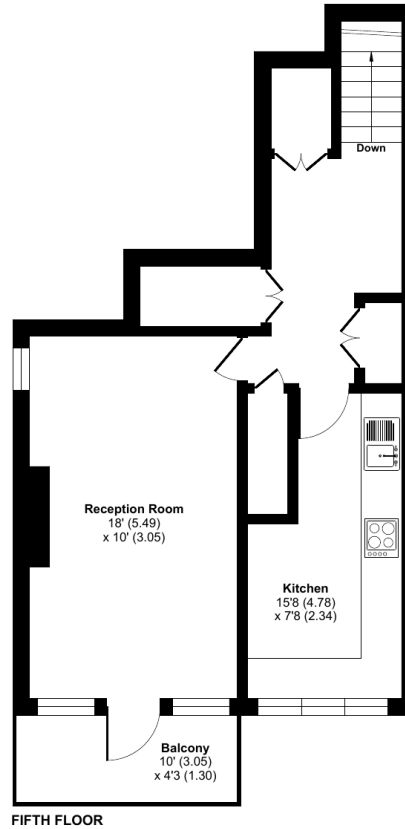
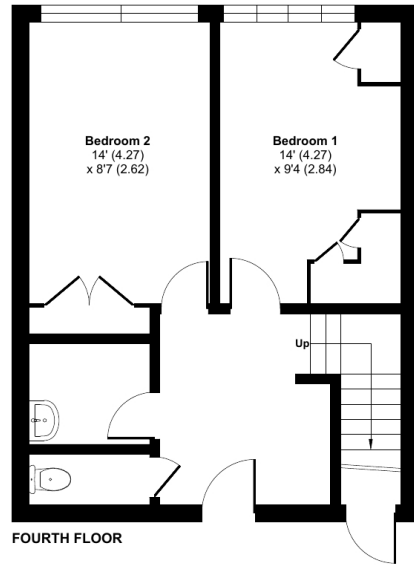


- Two double bedrooms
- Split level apartment
- Spacious eat in kitchen
- Lovely living area with ample space to entertain
- Security entry phone system
- Close to local amenities and transport links
- Communal gardens
- Sole agency with viewings strictly by appointment only.
- Whitechapel Station within walking distance

# Musbury Street, London, E1

Approximate Area = 893 sq ft / 82.9 sq m

For identification only - Not to scale



Floor plan produced in accordance with RICS Property Measurement Standards incorporating International Property Measurement Standards (IPMS2 Residential). © nchecon 2024. Produced for Cow & Co Properties Ltd. REF: 1115025

Tel: 0208 065 0010  
Email: [thehub@cowandco-london.com](mailto:thehub@cowandco-london.com)  
Web: [cowandco-london.com](http://cowandco-london.com)

Agents note: All measurements are approximate and whilst every attempt has been made to ensure accuracy they are for general guidance only and must not be relied on. The fixture and fittings referred to have not been tested and therefore no guarantee can be given that they are in working order. Internal photographs are reproduced for general information and it must not be inferred that any item shown is included with the property.

**Cow & Co**  
LONDON