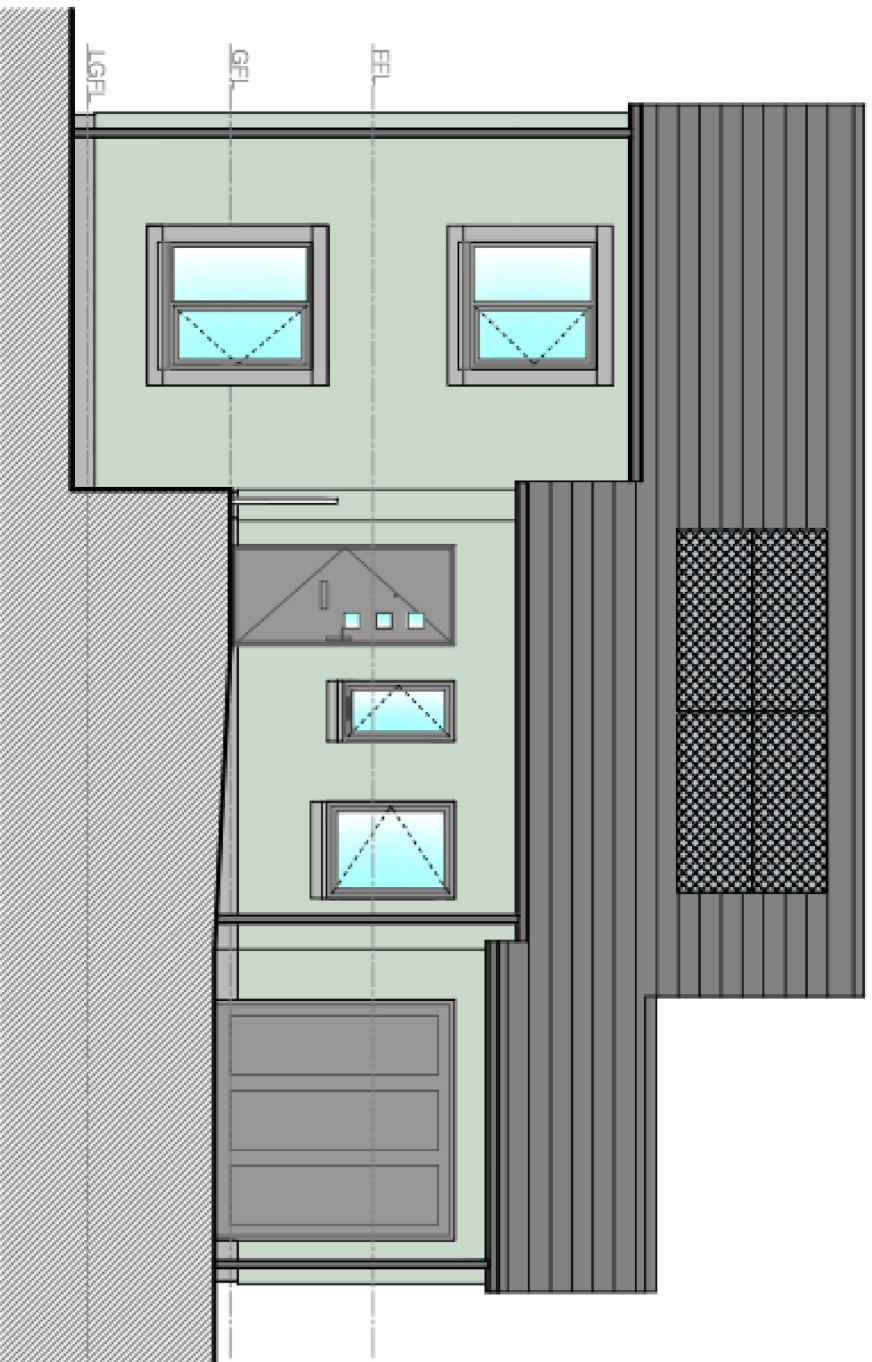




The Knowepark

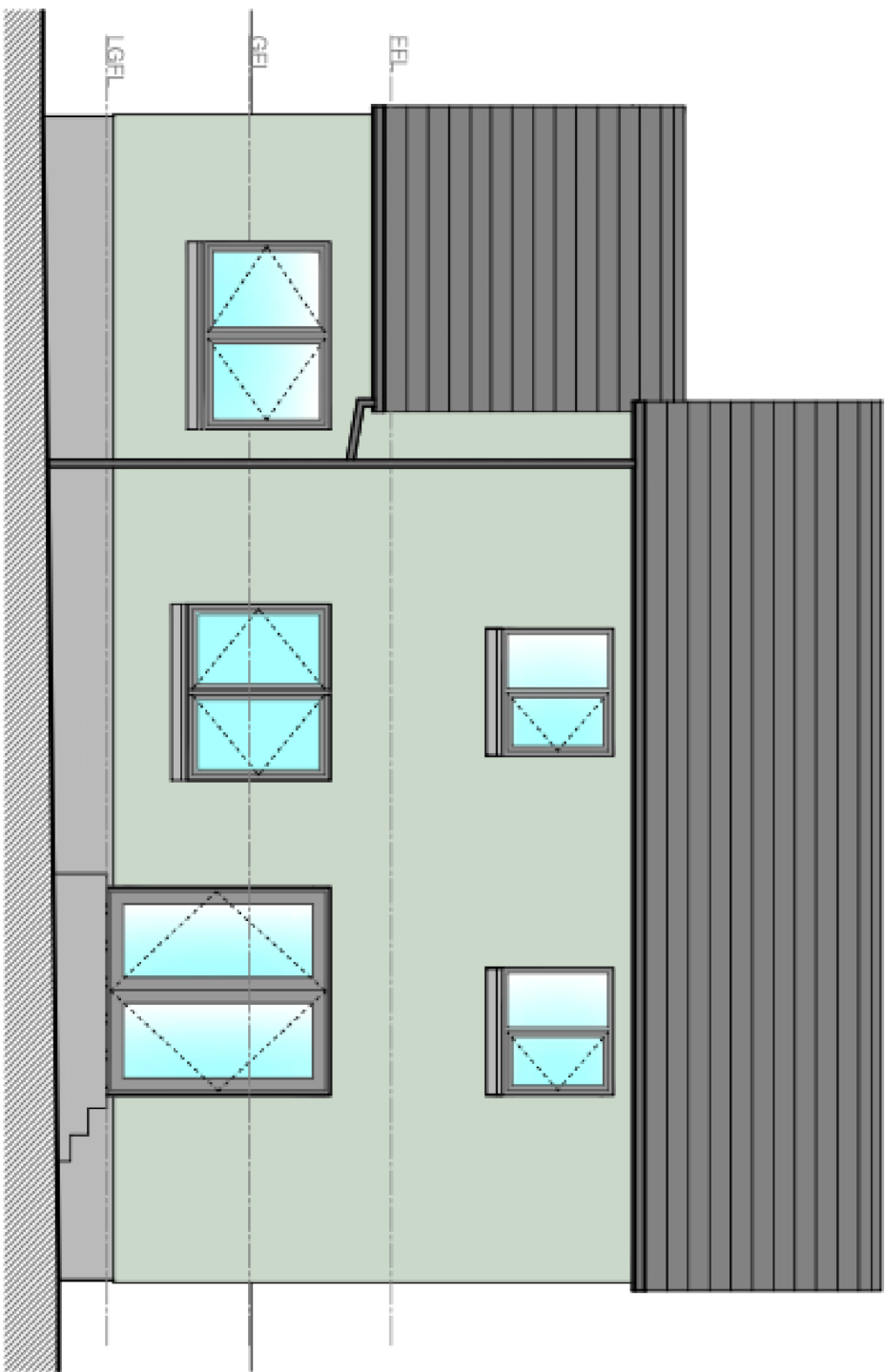


Hillside Drive, SELKIRK

**HOMES FOR
SCOTLAND**

AWARDS 2023

HOME BUILDER OF THE YEAR - SME



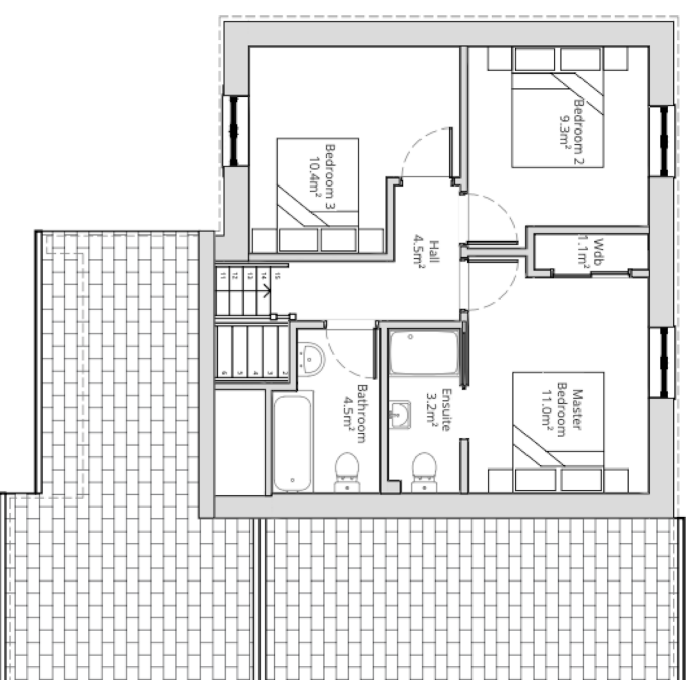
13 beautifully crafted homes by the Borders finest house builder

The Knowepark

Gross Internal Floor Area (sqm / sqft)			
House exc.	118.9 sqm	1280 sqft	
Garage	13.1 sqm	141 sqft	
Entire House	134.6 sqm	1449 sqft	



GROUND FLOOR PLAN



FIRST FLOOR PLAN

While it is the policy of JS Crawford 3rd Generation to provide accurate information to prospective purchasers, the information contained herein shall not constitute or form part of any contract. All plans and dimensions are indicative and may not be to scale. The developers reserve the right to depart from the design layout and to amend or vary the terms of the specifications.
For further information on the detail of any particular property, please speak to a Sales Advisor.

Telephone today: 01896 822030 Visit us online at: jscrawford.co.uk

