











Situated in a quiet cul-de-sac in the picturesque village of Elham, this four-bedroom detached bungalow offers spacious and versatile living. The accommodation includes an entrance porch, a bright living/dining room, a well-fitted kitchen, four bedrooms, an en suite shower room, and a main bathroom. Outside, the property features a front garden, a driveway providing parking, a garage, and an enclosed rear garden offering privacy and outdoor space. Offered with no forward chain, this charming bungalow presents an excellent opportunity to enjoy village living in a sought-after location. EPC RATING = D

**Guide Price £465,000**

**Tenure** Freehold

**Property Type** Detached Bungalow

**Receptions** 1

**Bedrooms** 4

**Bathrooms** 2

**Parking** Driveway & Garage

**Heating** Oil

**EPC Rating** D

**Council Tax** Band E  
Folkestone & Hythe





**Situation**

The property is situated towards the end of 'Hog Green' a quiet cul de sac in the village of Elham, which offers amenities including a highly regarded primary school, doctor's surgery, two churches, village hall, small supermarket, Three public houses to choose from including the recently refurbished Kings Arms which has been transformed inside and out offering quality food and drink to the villagers and its visitors. In the nearby town of Folkestone there are mainline railway stations with High Speed service to London Stratford and St Pancras stations with an approx. journey time of 53 minutes. Close to the M20 and Channel Tunnel. Regular bus services to Canterbury and Folkestone via surrounding villages.

**The accommodation comprises**

Entrance porch

Living/Dining room

21' 0" x 18' 0" (6.40m x 5.49m)

Kitchen

8' 11" x 8' 7" (2.72m x 2.62m)

Bedroom two

12' 8" x 9' 9" (3.86m x 2.97m)

Bedroom three

16' 4" x 8' 5" (4.98m x 2.57m)

Bedroom four

7' 11" x 5' 1" (2.41m x 1.55m)

Bathroom

6' 5" x 6' 0" (1.96m x 1.83m)





Rear hallway

Bedroom one

15' 3" x 14' 2" (4.65m x 4.32m)

En suite shower room

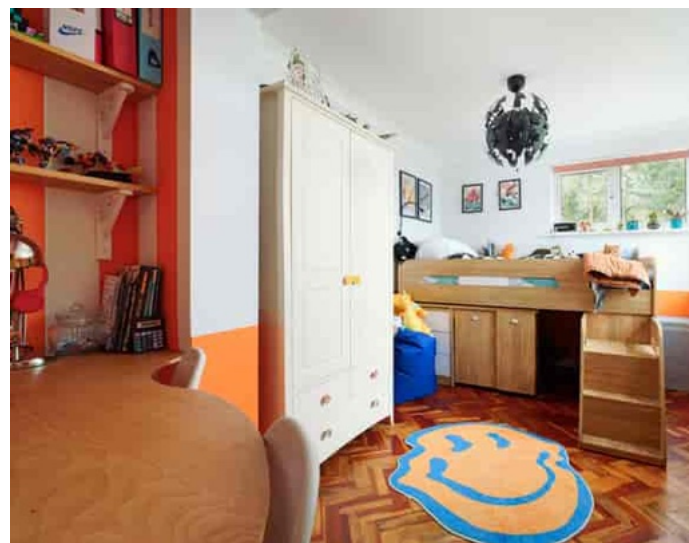
Outside

Front garden & Driveway

Garage

20' 6" x 8' 2" (6.25m x 2.49m)

Rear garden











Approximate Gross Internal Area = 95 sq m / 1027 sq ft  
Garage = 16 sq m / 167 sq ft

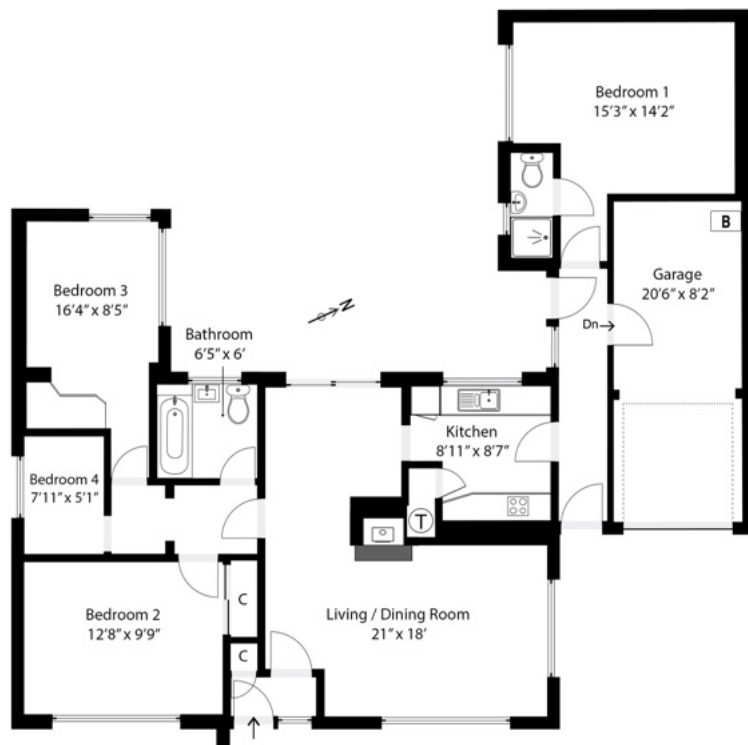


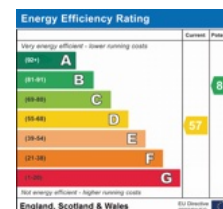
Illustration for identification purposes only. Measurements are approximate. Dimensions given are between the widest points.  
Not to scale. Outbuildings are not shown in actual location.  
© Unauthorised reproduction prohibited - chriskemps@hotmail.com



Need to book a viewing?

If you would like to book a viewing please contact our office on 01303 863393 or email [sales@laingbennett.co.uk](mailto:sales@laingbennett.co.uk)

See all our properties at



[www.laingbennett.co.uk](http://www.laingbennett.co.uk)

The Estate Office  
8 Station Road  
Lyminge  
Folkestone  
Kent  
CT18 8HP



These property details are intended to give a fair description and give guidance to prospective Purchaser/Tenant. They do not constitute an offer or contract of Sale/Tenancy and all measurements are approximate. While every care has been taken in the preparation of these details neither Laing Bennett Ltd nor the Vendor/ Landlord accept any liability for any statement contained herein. Laing Bennett Ltd has not tested any services, appliances, equipment or facilities, and nothing in these details should be deemed to be a statement that they are in good working order or that the property is in good structural condition or otherwise. We advise all applicants to commission the appropriate investigations before Exchange of Contracts/entering into a Tenancy Agreement. It should not be assumed that any contents/furnishing, furniture etc. photographed are included in the Sale/Tenancy, nor that the property remains as displayed in the photographs. No person in the employment of Laing Bennett Ltd has authority to make or give any representation or warranty whatever in relation to this property.