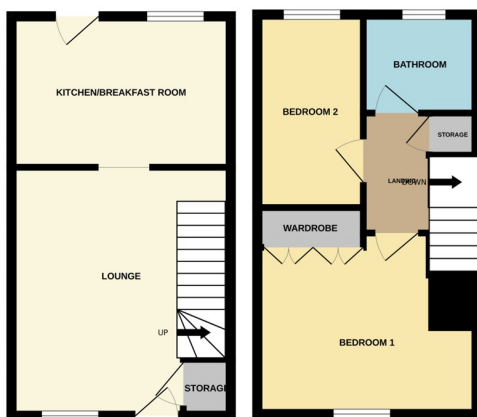




6 Viking Way, Thurlby, Bourne, Lincolnshire PE10 0HX

£195,000



*****IDEAL FIRST TIME BUYERS PROPERTY***** Rosedale are delighted to offer this very popular style of property in the village of Thurlby/Northborough. The property has a number of amenities including a shop, pub, school and a regular bus service to Peterborough and Bourne. This lovely property has two bedrooms, kitchen/breakfast, lounge, and family bathroom. Outside there are front and rear gardens with a garage and off road parking. To fully appreciate this property viewings are highly recommended. EPC Energy Rating D/Council Tax Band A.

ENTRANCE HALL

Half glazed door to front, stairs to first floor, cupboard and radiator.

LOUNGE

14' 4" x 12' 9" (4.37m x 3.89m) (approx.) UPVC window to front, wood flooring and radiator.

KITCHEN/BREAKFAST

12' 8" x 8' 9" (3.86m x 2.67m) (approx.) Fitted with a range of base and eye level units, stainless steel sink unit with mixer tap, part tiled walls, integrated oven and fridge, hob, extractor fan, plumbing and space for washing machine, tiled flooring, radiator, wall mounted gas boiler, UPVC window to rear and UPVC door to rear.

LANDING

Loft access and cupboard.

BEDROOM ONE

12' 8" x 12' 0" (3.86m x 3.66m) (approx.) UPVC window to front, wood flooring, radiator and wardrobe.

BEDROOM TWO

11' 1" x 6' 2" (3.38m x 1.88m) (approx.) UPVC window to rear and radiator.

BATHROOM

Fitted with a three piece suite comprising WC, wash hand basin and bath with electric shower over, part tiled walls, radiator and UPVC window to rear.

OUTSIDE

Front- Laid to lawn and mature shrubs.

Rear- Paved patio, laid to lawn, mature shrubs and shed.

SINGLE GARAGE

Off road parking and gated side access.

AGENTS NOTE

The floorplan is for illustrative purposes only. Fixtures and fittings may not represent the current state of the property. Not to scale and is meant as a guide only.

