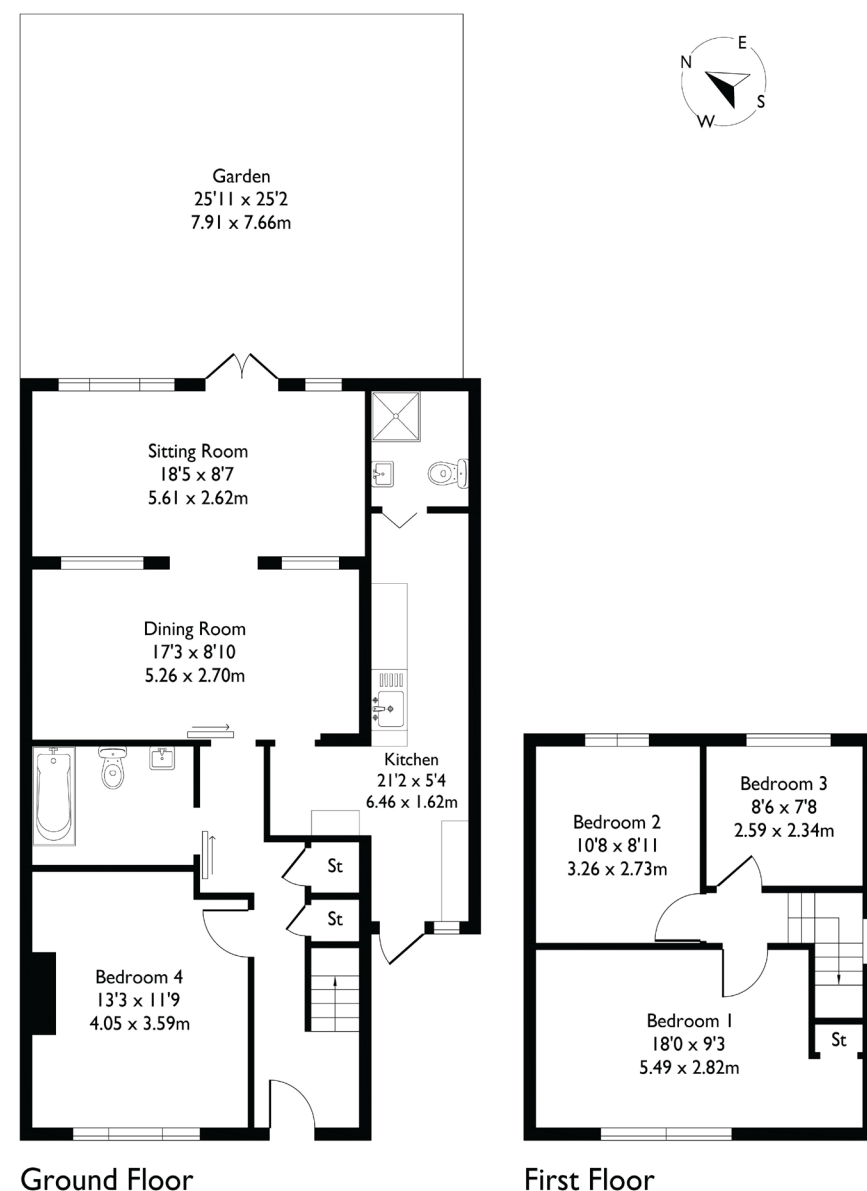


Upfield Road, London, W7

Approximate Floor Area = 112 sq m / 1199 sq ft



3 BEDROOM HOUSE

Upfield Road, W7

£599,950

Welcome to this well-presented three bedroom property, ideally located in the heart of Hanwell.

This versatile home offers spacious accommodation throughout, with generously sized bedrooms—one of which is located on the ground floor and can alternatively be used as an additional reception room. The property features separate kitchen, living, and dining areas, providing a traditional layout with the exciting potential to create an open-plan kitchen and living space, perfect for modern family living.

FEATURES

- Three Bedrooms
- One Bathrooms/Downstairs W/C
- Separate Kitchen Living Space
- Driveway For Two Cars
- Brentside High School/Primary School
- Castlebar Park Station
- EPC Rating C



3 BEDROOM HOUSE

Upfield Road, W7

Additional benefits include a private driveway with space for two cars and convenient side access to the kitchen.

Located just moments from Castle Bar Park Station, this property offers easy access to West Ealing and the Elizabeth Line, making commuting a breeze.

It also falls within the catchment area for the highly regarded Brentside Primary and High Schools. This is a fantastic opportunity to secure a spacious and flexible family home in a desirable West London location.

EPC Rating C.

