



Three Chimneys, Ninfield Road, Bexhill-on-Sea, East Sussex, TN39 5JR

£650,000

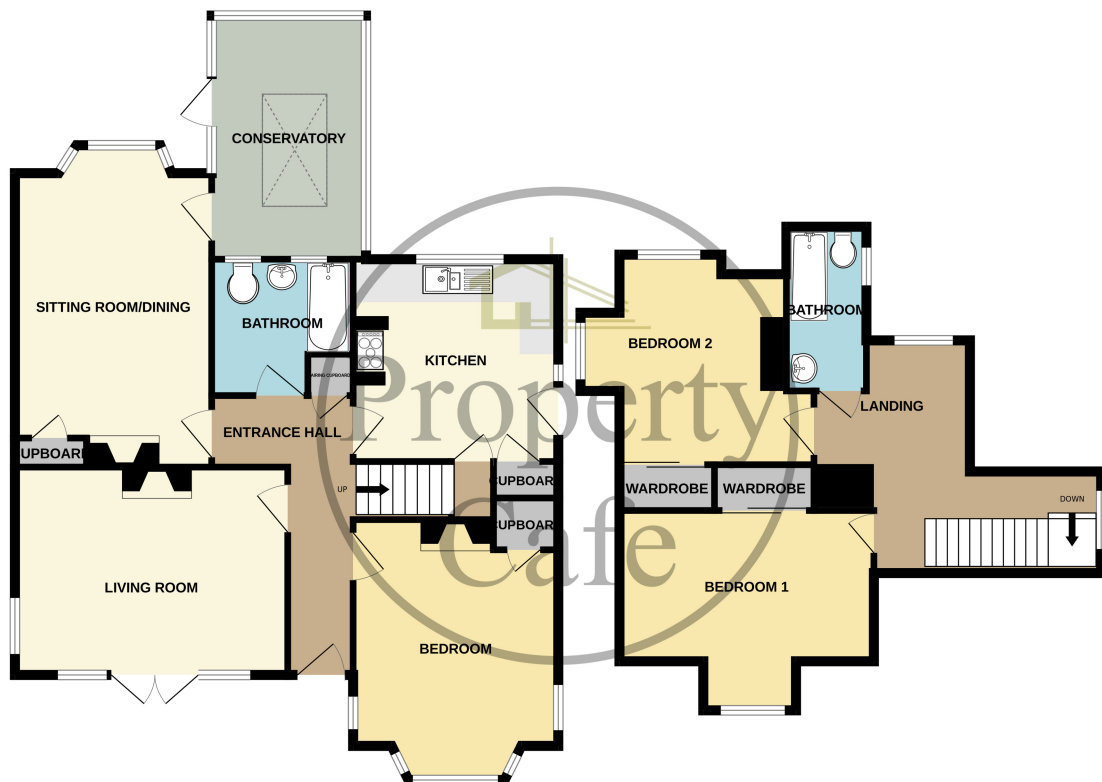


- Immaculate three bedroom chalet style property
- Three good size double bedrooms
- Spacious South facing family Lounge
- Cosy family dining room with log burner
- Modern bathrooms on both the ground and first floor
- Central heating and double glazing throughout
- Immaculate in a hall with exposed wood flooring
- Lovely character chalet style house
- Versatile and flexible accommodation
- Good size rear garden mostly laid to lawn
- Gated Pea- Beach driveway ample parking
- Timber built double garage
- Additional brick built single garage
- Sought After Semi-Rural Location
- Internal viewing highly recommended.



**GROUND FLOOR**  
1016 sq.ft. (94.4 sq.m.) approx.

**1ST FLOOR**  
492 sq.ft. (45.7 sq.m.) approx.



**TOTAL FLOOR AREA : 1508 sq.ft. (140.1 sq.m.) approx.**

Whilst every attempt has been made to ensure the accuracy of the floorplan contained here, measurements of doors, windows, rooms and any other items are approximate and no responsibility is taken for any error, omission or mis-statement. This plan is for illustrative purposes only and should be used as such by any prospective purchaser. The services, systems and appliances shown have not been tested and no guarantee as to their operability or efficiency can be given.  
Made with Metroplan ©2024.

