



FELLS GULLIVER

PROPERTY EXPERTS

Est.1988

4 Pinetops Close

Pennington • Lymington • SO41 8ET



4 Pinetops Close

Pennington • Lymington • SO41 8ET

This well presented two double bedroom detached bungalow with south west facing garden, master bedroom with en-suite shower, garage and driveway parking, is located within reach of the local village shops and amenities.



2



2



£499,950

Key Features

- Kitchen/breakfast room
- Master bedroom with range of built-in wardrobes and en-suite shower
- Modern shower room suite
- Detached garage with covered walkway
- Well presented accommodation throughout and boiler installed in Oct 2022
- Sitting room with feature fireplace
- Second double bedroom with built-in wardrobes
- Southerly aspect garden with summerhouse, sheds and greenhouse
- Driveway parking



Description

Located in a quiet position within easy reach of local village shops and amenities, this well presented two double bedroom detached bungalow benefits from a southerly and west facing garden, detached garage and driveway parking.

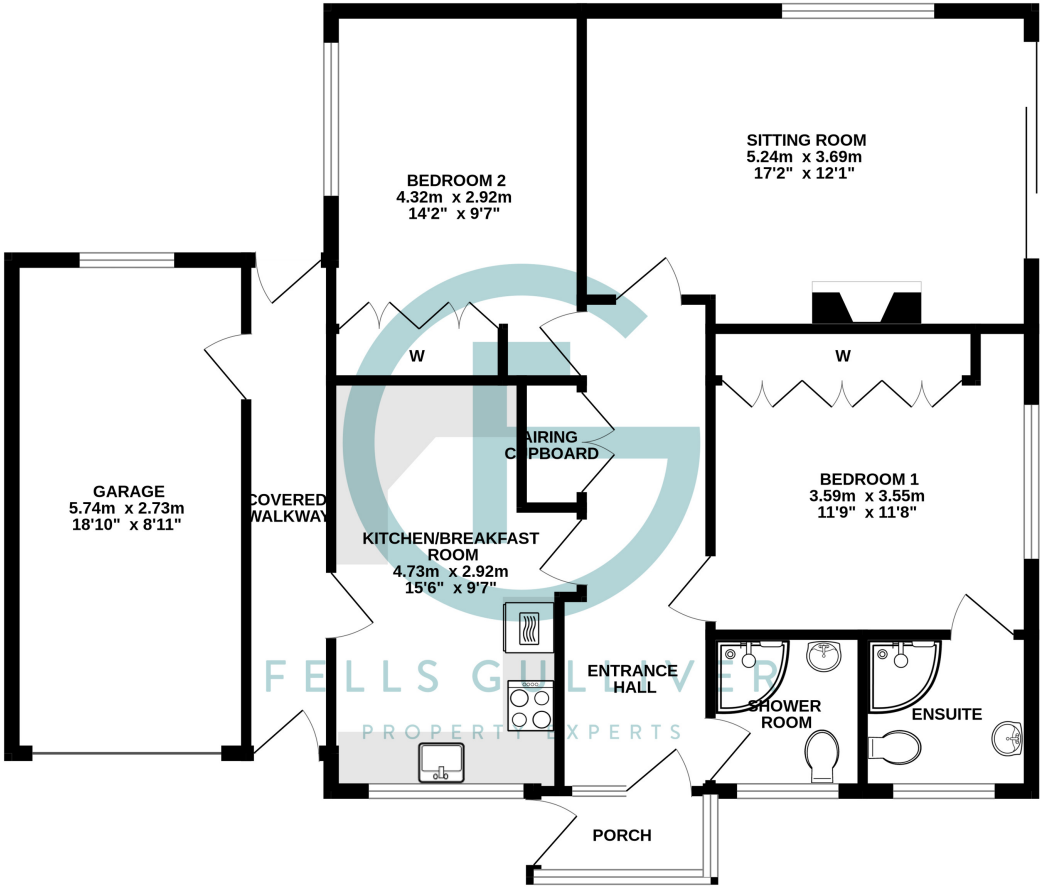
Door into the glazed porch with front door leading into the entrance hall with an airing cupboard which houses a heated towel rail which can be used independently when the central heating is not in use, and there is shelving for linen storage. Pull down ladder gives access to the loft space, which is partially boarded with power and light and houses the gas fired central heating boiler which was installed in October 2022. Shower room comprising a fully tiled shower cubicle with mixer shower, low level WC, wash hand basin with mixer tap and vanity storage under, tall chrome heated towel rail, part tiled walls, tiled floor, obscure window to the front aspect. Obscure glazed door from the hallway leading into the modern kitchen/breakfast room with comprehensive range of floor and wall mounted cupboards and drawer units with granite effect worktop and inset sink unit with mixer tap and splashbacks. Integral appliances include a washing machine, dishwasher, tall fridge freezer, eye level electric double oven with microwave above and a four ring induction hob. Breakfast bar area with space for two bar stools, walk-in corner larder with lights, window to the front aspect. Pedestrian door leading out to the side covered walkway. Sitting room with feature fireplace with inset coal effect gas fire, window to the rear aspect and sliding patio doors to the side aspect leading out to the garden. Master bedroom with range of fitted wardrobes, window to the side aspect and door leading into the en-suite shower room which has a modern suite comprising a fully tiled shower cubicle with mixer shower, low level WC, wash hand basin with mixer tap and vanity storage under, chrome heated towel rail, part tiled walls, tiled floor and obscure window to the front aspect. Double bedroom two with two double wardrobes and window to the side aspect.

Outside to the front of the property, the open plan front garden is mainly laid to lawn with flower bed borders and shrubs, there is a path leading up to the front door and a block paved driveway leading up to the detached garage which has an up and over door, pedestrian door to the side and window to the rear aspect, with multiple power sockets, lights and built in cupboards and worktop. Outside tap and outside light. There is a secure part glazed pedestrian door leading through a covered walkway between the bungalow and the garage with a door opening through to the rear garden. The property is fenced to all boundaries, with a side gate giving pedestrian access. The garden is of a south and westerly aspect and wraps round the rear and both sides of the bungalow. There is a lean-to, providing an ideal area to store bikes, BBQ etc, with washing line and power socket. There is a summerhouse, two sheds, a greenhouse and outside lights all around the property. The garden is mainly paved with shingled areas and various raised beds, shrubs and various plants.

The property is within level walking distance walk of the centre of Pennington village, local catchment schools as well as the popular Leisure Centre. There are also good transport links nearby for easy access into Lymington High Street with its large range of shops and boutiques, supermarkets, and restaurants. The High Street leads to the quaint cobbled street of Quay Hill and the Marinas and Yacht Clubs beyond. There is a train station offering links to London.

Floor Plan

GROUND FLOOR
96.9 sq.m. (1043 sq.ft.) approx.



FLOOR PLAN CREATED BY FELLS GULLIVER ESTATE AGENTS

TOTAL FLOOR AREA: 96.9 sq.m. (1043 sq.ft.) approx.

Made with Metropix ©2024



FELLS GULLIVER

PROPERTY EXPERTS

Est.1988

For more information or to arrange a viewing please contact
Fells Gulliver • 125 High Street • Lymington • SO41 9AQ
T: 01590 671711 E: lymington@fells-gulliver.com



Est.1988



www.fellsgulliver.com

Fells Gulliver • 125 High Street • Lymington • SO41 9AQ • T: 01590 671711 • E: lymington@fellsgulliver.com



FELLS GULLIVER

PROPERTY EXPERTS

Est.1988