



9 Whittle Court,
Knowlhill, Milton Keynes, MK5 8FT

Tel: 01908 231 551
mail@elevationstateagents.com



The Laurels Stearthill House, Whaddon Road, Little Horwood, Milton Keynes, Buckinghamshire, MK17 0PR

£775,000 Freehold

- Stunning Four Bedroom Home
- Desirable Location
- Private Driveway & Garage
- Beautiful Condition Throughout
- Landscaped Garden with an Outhouse
- EPC Rating





Part of a beautifully designed country conversion, The Laurels is part of an exclusive, gated development just six miles from the centre of Milton Keynes.

Originally a wing of a large country house, the semi-detached property is located in a courtyard setting accessed via security gates and an intercom.

The ground floor of the property has a large living room as well as a good-sized kitchen/diner, both of which have double doors onto the landscaped garden. The kitchen has beautiful Yorkstone flooring and integrated appliances. There is a study off the hallway and a downstairs WC.

The upstairs features four double bedrooms, with two being able to fit super king beds. The master bedroom has two built in double wardrobes as well as an ensuite. The family bathroom is of a good size and has a stand-alone shower and bath.

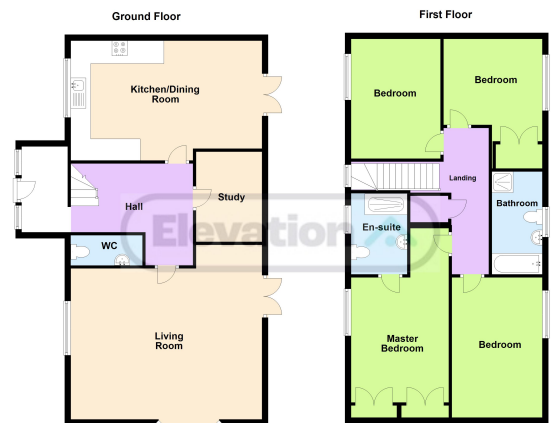
There is underfloor heating throughout the property and a recently installed boiler and air source pump.

The Laurels is set in an exclusive enclave of homes in beautiful, rural surroundings. It has a gated entrance and enjoys access to communal grounds, including a lake. It also has a private, lawned garden, with a terrace and garden studio, and a detached double garage, accessible through the garden.

From here there are numerous dog friendly walks to the local village which also has a pub, and is ideally placed for access to good transport links, schools, shops and leisure amenities

Disclaimer

Whilst we have endeavoured to prepare our sales particulars accurately none of the services, appliances or equipment have been tested. A buyer should satisfy themselves on such matters prior to purchase. Any measurements or distances mentioned in these particulars are for guide reference only. If such particulars are fundamental to a purchase, buyers should rely on their own enquiries. All enquiries should be directed to Elevation Estate Agents in the first instance.



Floor plans are for layout purposes only. Measurements are approximate and subject to inaccuracies. Plans produced using PlanIt.