



**126 Johnson Drive, Leighton Buzzard,
Bedfordshire, LU7 4AY**

£92,000 Leasehold

- Two bedroom
- Allocated parking
- Ideal first time purchase
- First floor apartment
- 50% Shared ownership
- Desirable location of Leighton Buzzard
- Open plan living space
- EPC Rating B





INTERIOR

Entrance Hall

Doors leading to:

Lounge Diner

Kitchen

Bedroom One

Bedroom Two

Family Bathroom

Fitted to comprise three piece suite

EXTERIOR

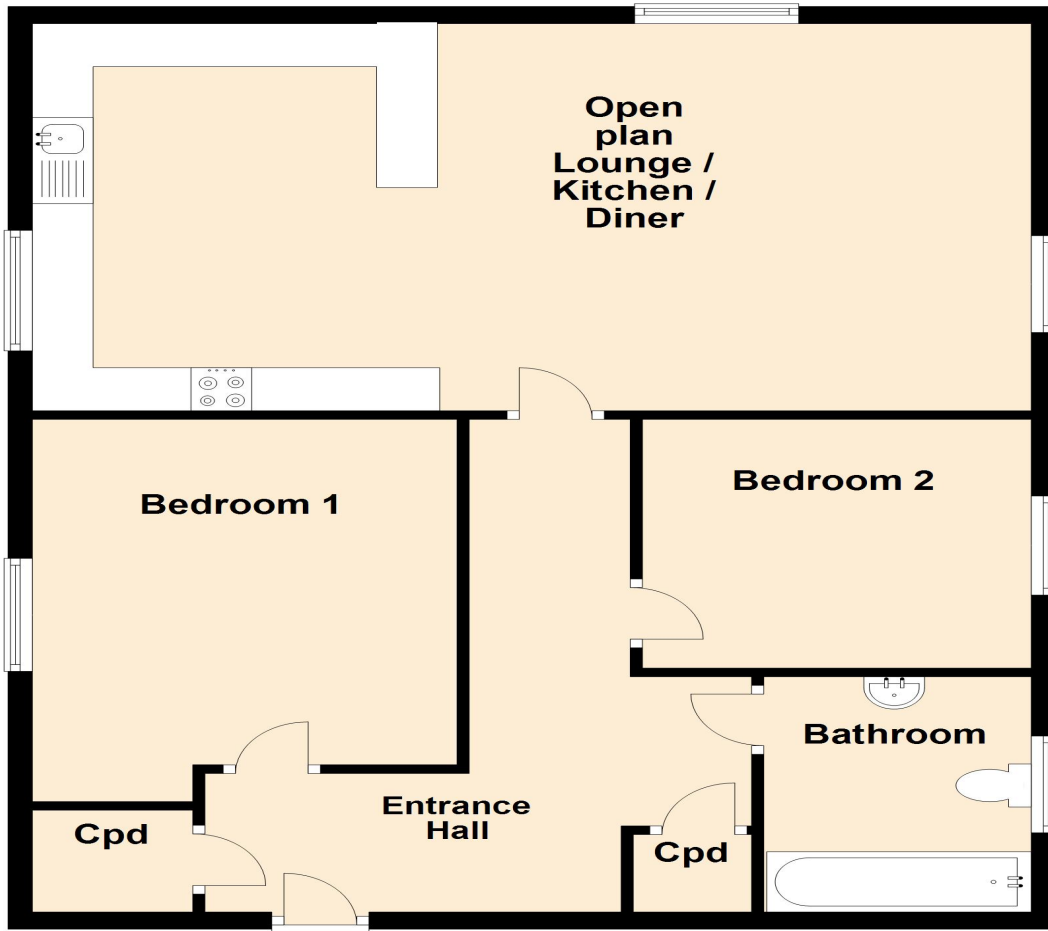
Allocated Parking

Space for one vehicle

Disclaimer

Whilst we have endeavoured to prepare our sales particulars accurately none of the services, appliances or equipment have been tested. A buyer should satisfy themselves on such matters prior to purchase. Any measurements or distances mentioned in these particulars are for guide reference only. If such particulars are fundamental to a purchase, buyers should rely on their own enquiries. All enquiries should be directed to Elevation Estate Agents in the first instance.

First Floor



elevation estate agents
Plan produced using PlanUp.

Energy Efficiency Rating		Environmental Impact (CO ₂) Rating			
	Current	Potential		Current	Potential
<i>Very energy efficient - lower running costs</i>				<i>Very environmentally friendly - lower CO₂ emissions</i>	
(92 to 100) A			(92 to 100) A		
(81 to 91) B			(81 to 91) B	86	87
(69 to 80) C			(69 to 80) C		
(55 to 68) D			(55 to 68) D		
(39 to 54) E			(39 to 54) E		
(21 to 38) F			(21 to 38) F		
(1 to 20) G			(1 to 20) G		
<i>Not energy efficient - higher running costs</i>				<i>Not environmentally friendly - higher CO₂ emissions</i>	
England, Wales & N.Ireland	EU Directive 2002/91/EC		England, Wales & N.Ireland	EU Directive 2002/91/EC	

>