



26 Reginald Road, Bexhill-on-Sea, East Sussex,
TN39 3PH

£250,000

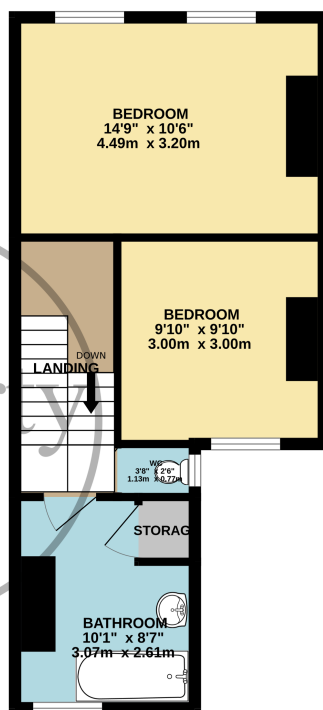
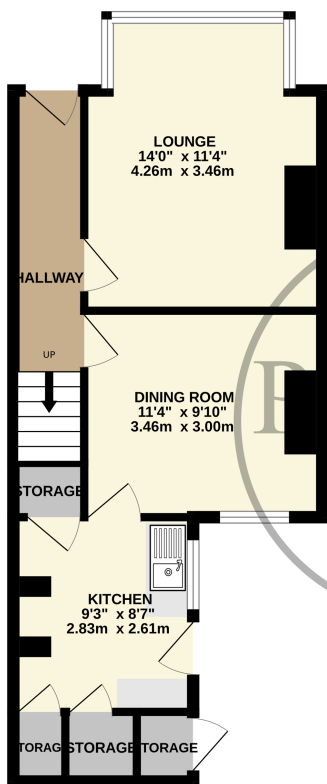


- Two Bedroom Terraced House
- Two reception Rooms
- Modern Fitted Kitchen
- Two Double Bedrooms
- Modern Fitted Bathroom
- Low Maintenance Rear Garden
- Double Glazed & Gas Central Heated Throughout
- Sought After Town Centre Location
- Sold With No Onward Chain
- Viewing Highly Recommended



GROUND FLOOR
422 sq.ft. (39.3 sq.m.) approx.

1ST FLOOR
387 sq.ft. (35.9 sq.m.) approx.



TOTAL FLOOR AREA : 809 sq.ft. (75.2 sq.m.) approx.

Whilst every attempt has been made to ensure the accuracy of the floorplan contained here, measurements of doors, windows, rooms and any other items are approximate and no responsibility is taken for any error, omission or mis-statement. This plan is for illustrative purposes only and should be used as such by any prospective purchaser. The services, systems and appliances shown have not been tested and no guarantee as to their operability or efficiency can be given.

Made with Metropix ©2023