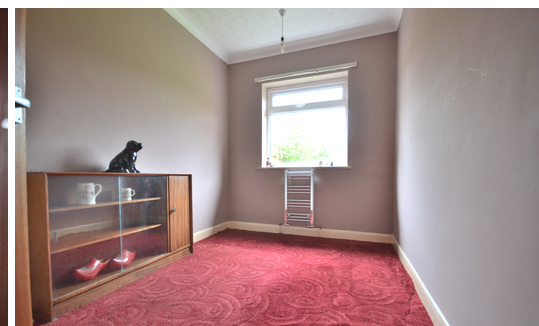




NEWSON & BUCK
ESTATE AGENTS



NEWSON & BUCK
ESTATE AGENTS



43 Alma Road, Snettisham, King's Lynn, Norfolk PE31 7NY £249,995

Newson & Buck are pleased to offer to the market this two bedroom semi detached bungalow situated in the desirable village of Snettisham. The property comprises of a lounge, kitchen diner, two bedrooms, bathroom and a garage. The property benefits from off road parking, double glazing and an enclosed rear garden. Snettisham has its own amenities as well as a bus route to both King's Lynn and Hunstanton.

Lounge

19' 07" x 11' 10" (5.97m x 3.61m) Fitted carpet, one radiator, one double glazed window.

Kitchen Diner

23' 07" x 11' 0" (7.19m x 3.35m) Wood flooring, fitted kitchen units, space for washing machine, fridge freezer, three double glazed windows, stainless steel sink, one radiator.

Bedroom One

11' 01" x 11' 10" (3.38m x 3.61m) Fitted carpet, one radiator, one double glazed window.

Bedroom Two

7' 05" x 11' 1" (2.26m x 3.38m) Fitted carpet, one radiator, one double glazed window.

Bathroom

6' 03" x 9' 06" (1.91m x 2.90m) Vinyl flooring, shower area, cupboard space, one double glazed window, one radiator, pedestal sink.

Rear Garden

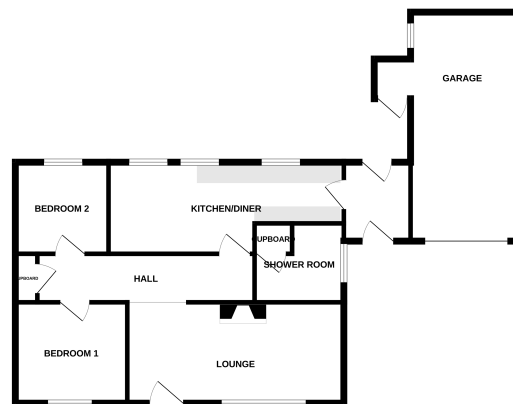
Enclosed rear garden.

EPC TBC

Council Tax Band B



GROUND FLOOR



Whilst every effort has been made to ensure the accuracy of the description, the measurements of areas, volumes, weights and other data are approximate and do not constitute a guarantee or warranty. The plan is for illustrative purposes only and should not be used as a basis for any legal proceedings. The seller, its agents and any other person involved in the sale of the property do not accept any liability for any loss or damage caused by any error or omission in this information. Plans are subject to change without notice.