



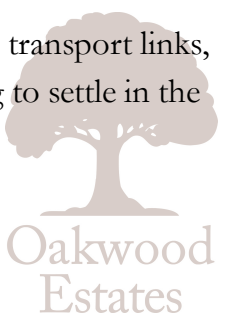
This two bedroom end of terrace house is presented to the market in a well maintained condition throughout, and sits just off the sought after Trelawney Avenue, providing easy access to local schools such as Langley Grammar School and only a short commute to Langley Station.

The ground floor features a bright and airy reception room and, a modern kitchen equipped with an integrated dishwasher, gas hob, as well as a breakfast bar. The property also benefits from a separate dining space and study with a downstairs shower room as result of a rear extension and garage conversion.

The first floor houses a three piece family bathroom and two bedrooms complete with fitted storage.

Externally, there is allocated parking for one car plus plenty of on street parking for visitors. Additionally, there is a low maintenance rear garden that includes a large storage shed.

Due to it's fantastic location with close proximity to a range of highly regarded schools and transport links, the property provides a great opportunity for first time buyers and smaller families looking to settle in the area.



Property Information

- 

TWO BEDROOM END OF TERRACE HOUSE
- 

POPULAR LOCATION WITHIN WALKING DISTANCE TO NEARBY SCHOOLS
- 

THREE RECEPTION ROOMS
- 

SHORT COMMUTE TO LANGLEY STATION
- 

LOW MAINTENANCE REAR GARDEN
- 

GOOD CONDITION THROUGHOUT
- 

TWO BATHROOMS INCLUDING DOWNSTAIRS SHOWER ROOM
- 

CLOSE PROXIMITY TO LOCAL AMENITIES
- 

EXTENDED AT THE REAR WITH ADDITIONAL GARAGE CONVERSION
- 

ALLOCATED PARKING



x2

Bedrooms



x3

Reception Rooms



x2

Bathrooms



x1

Parking Spaces



Y

Garden



N

Garage

Transport Links

NEAREST STATIONS:

- Langley - 0.8 miles
- Datchet - 1.6 miles
- Slough - 1.6 miles

Local Schools

PRIMARY SCHOOLS:

- Ryvers School

370 yards
- The Langley Academy Primary

390 yards
- Castleview Primary School

700 yards
- Marish Primary School

0.5 miles
- Holy Family Catholic Primary School

0.6 miles

Langley Hall Primary Academy
0.6 miles

SECONDARY SCHOOLS:

- Langley Grammar School

520 yards
- The Langley Academy

540 yards
- Langley Hall Arts Academy

0.6 miles
- Ditton Park Academy

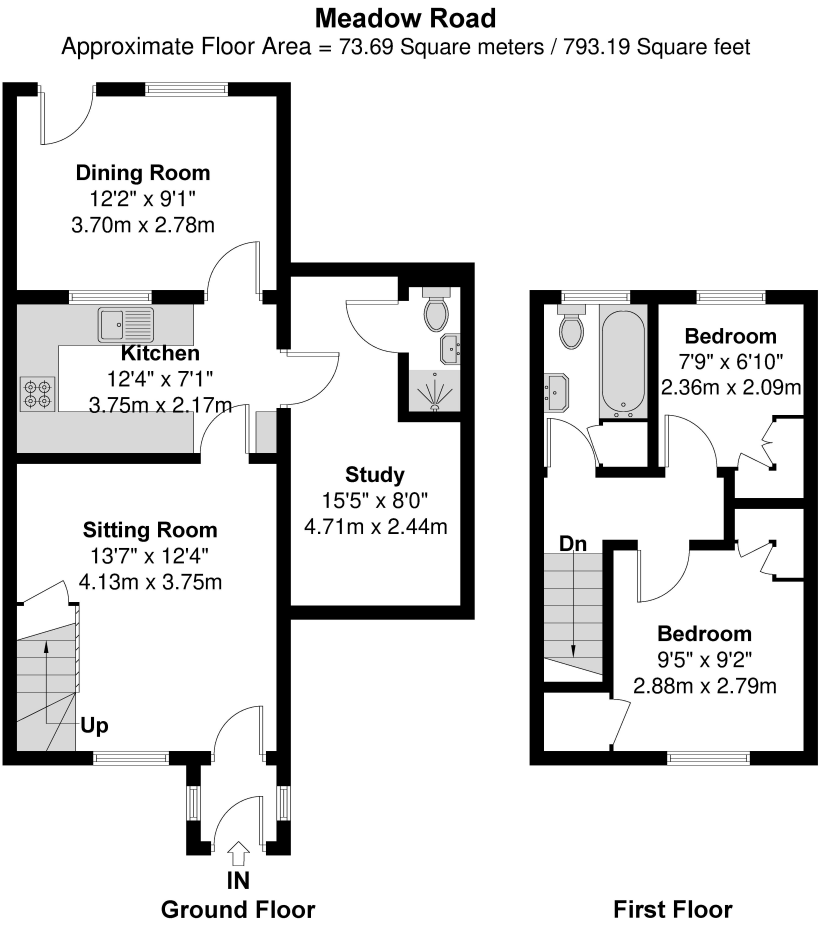
0.7 miles
- St Bernard's Catholic Grammar School

0.7 miles
- Upton Court Grammar School

0.9 miles

Council Tax
Band C

Floor Plan



Prospective purchasers should be aware that these sales particulars are intended as a general guide only and room sizes should not be relied upon for carpets or furnishing. We have not carried out any form of survey nor have we tested any appliance or services, mechanical or electrical. All maps are supplied by Goview.co.uk from Ordnance Survey mapping. Care has been taken in the preparation of these sales particulars, which are thought to be materially correct, although their accuracy is not guaranteed and they do not form part of any contract.

