

Jack Taggart & Co

RESIDENTIAL SALES

CROMWELL ROAD, BN3 3EE

£2,995 PCM

CROMWELL ROAD, BN3 3EE

Jack Taggart and Co are delighted to offer this three double bedroom apartment located in central Hove. Perfect for families or sharers, this property is located within a close proximity to Hove mainline station.

The living room is an expansive and inviting area, featuring a stunning glass wall that floods the space with natural light. The room is adorned with a Velux window, allowing even more light to pour in, adding a touch of elegance and warmth. A school-style radiator is prominently placed, adding a nostalgic and functional element to the space. The high ceiling with white beams further amplifies the airy feel, creating a sense of grandeur. This versatile room offers endless potential for various layouts and uses, making it a perfect canvas for your personal touch and creativity.

Moving onto the kitchen/dining area we have white cabinets which provide a clean, bright, and timeless look, perfectly complementing the warm wood countertops that add a touch of natural charm. This kitchen is a culinary enthusiast's dream, designed with ample space for cooking and entertaining. The kitchen boasts integrated appliances including a dishwasher, washing machine, fridge and freezer. Benefiting from an island that serves multiple purposes. It features an oven and hob, making it a convenient spot for preparing meals while still being part of the action. The island also doubles as a breakfast bar, offering a cozy place for casual dining or a quick coffee break. With its thoughtful layout and stylish design, this kitchen is perfect for both everyday cooking and hosting gatherings.

The living and kitchen areas are the ideal setting for any occasion. Whether you're hosting a lively gathering with friends or enjoying a quiet, cozy night in, it offers the perfect ambiance. The spacious layout and inviting decor make it a great place to entertain guests, while the warm lighting and comfortable furnishings create a snug atmosphere for relaxing evenings.

Bedroom One is a fantastic sized double which offers plenty of space for relaxation and rest. The room is carpeted, providing a cozy and warm feel underfoot. Large windows allow ample natural light to flood in, creating a bright and airy atmosphere. The layout offers flexibility for various furniture arrangements, making it easy to personalize the space to your liking.

Bedroom Two is another spacious double bedroom, where comfort meets functionality. The room features soft carpeting that adds a touch of luxury and warmth. Generous windows ensure the room is bathed in natural light throughout the day, enhancing the sense of space. With ample room for a king-sized bed and additional furniture, this bedroom is perfect for creating your own private retreat.

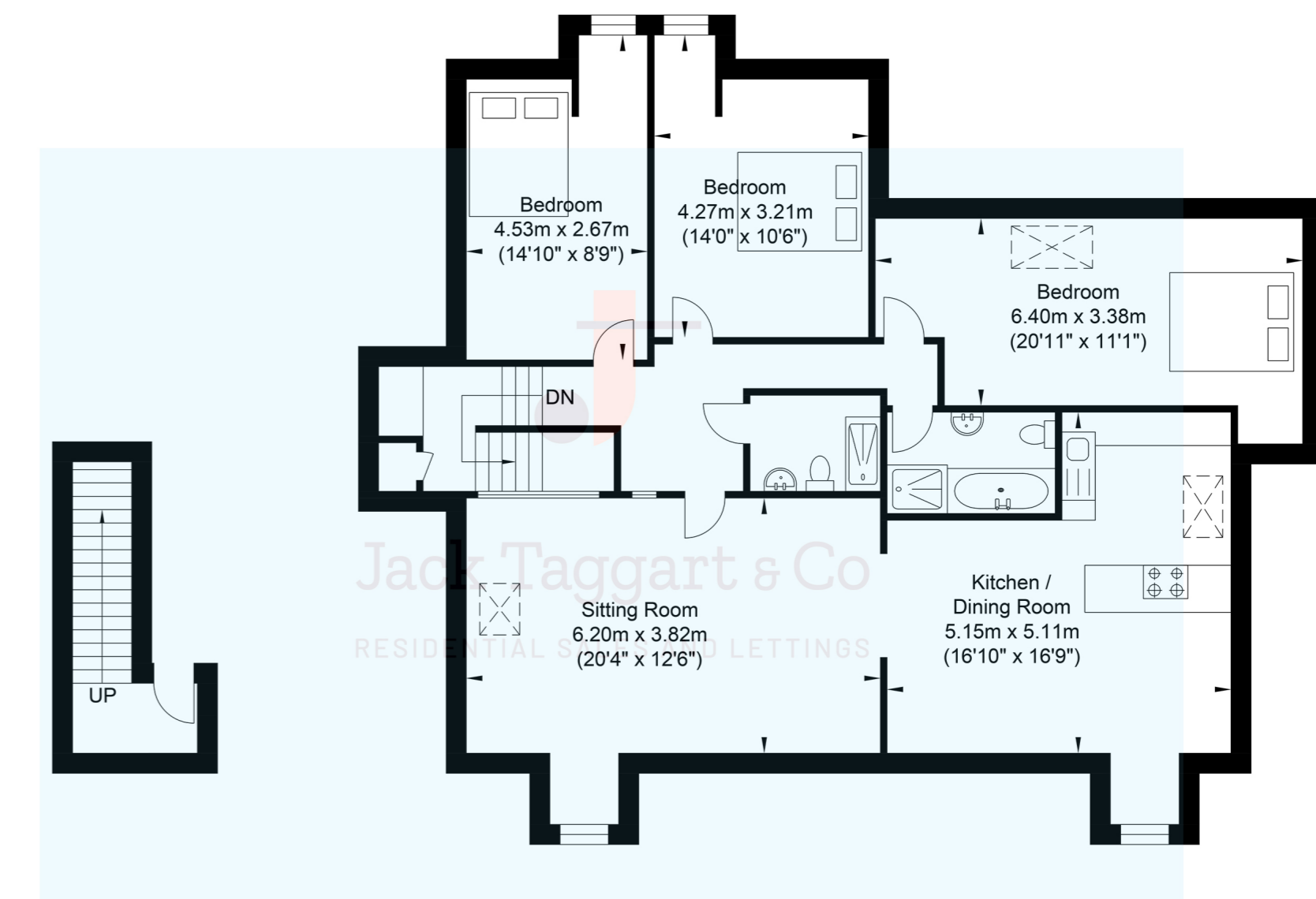
Bedroom Three is also an impressive double bedroom and is designed with both style and comfort in mind. The plush carpet underfoot adds a layer of comfort, while the large windows provide excellent natural light and views. The room's generous size allows for versatile furniture placement, making it easy to create a cozy and inviting sanctuary. Whether you need space for a home large office or a spacious reading nook, this bedroom offers endless possibilities.

The family bathroom features black-tiled walls provide a striking contrast to the pristine white fixtures, including a contemporary vanity unit and a spacious deep seated bathtub. The walk-in shower is enclosed with clear glass, allowing the black tiles to shine through and enhance the room's luxurious feel. Subtle lighting fixtures add a warm glow, making this bathroom a perfect blend of style and comfort.

The additional shower room features a double walk-in shower enclosed by sleek glass doors, offering a spacious and modern bathing experience. The room is adorned with elegant dark tiles creating a sophisticated ambiance. Adjacent to the shower, you'll find a matching toilet and sink. A towel warmer rack is conveniently mounted on the wall next to the shower, ensuring warm towels are always within reach.

Call today to avoid disappointment!

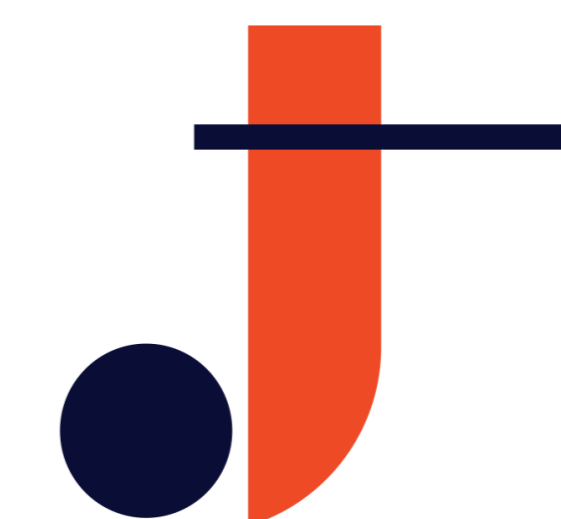
Cromwell Road



Second Floor Entrance
Approximate Floor Area
52.74 sq ft
(4.90 sq m)

Third Floor
Approximate Floor Area
1226.65 sq ft
(113.96 sq m)

Approximate Gross Internal Area = 118.86 sq m / 1279.39 sq ft
Illustration for identification purposes only, measurements are approximate, not to scale.



Jack Taggart & Co

RESIDENTIAL SALES