

25 Barge Walk, North Greenwich, London, SE10 0NB

£1,550 PCM

Located moments from the many amenities in North Greenwich, this modern two bedroomed apartment has been finished to a high standard throughout with modern fixtures, hard wood floors and neutral décor. Briefly comprising modern kitchen open plan to reception providing access onto a spacious balcony with serene views across the River Thames. Two double bedrooms, master en-suite and further bathroom. Offered unfurnished. AVAILABLE 11th JULY 2018.

Viewing by appointment with 1st avenue.

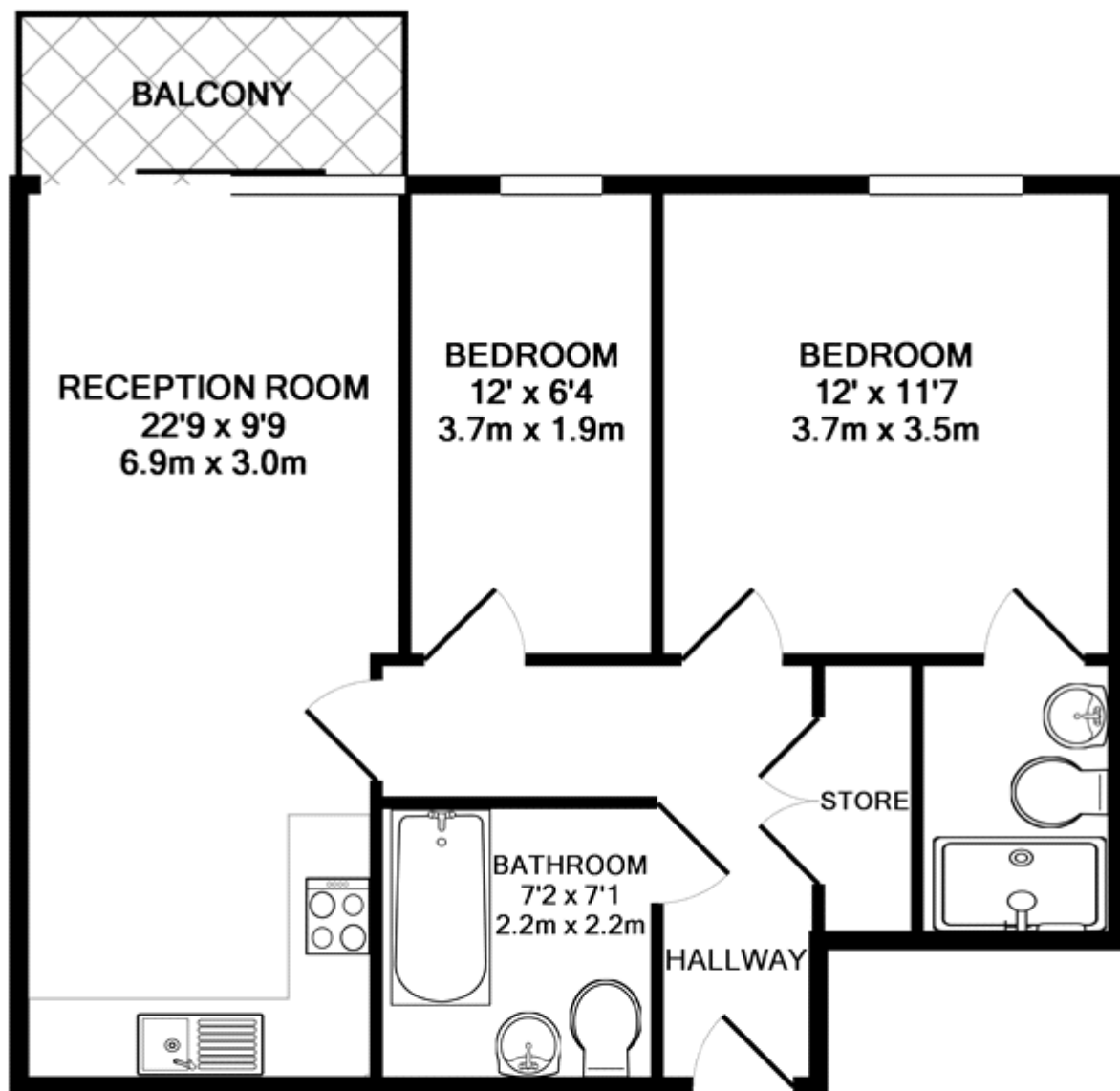
Call: 020 8293 8600

1st avenue, 128 Metcalfe Court, West Parkside, London SE10 0EL
email: info@1stavenue.co.uk

25 Barge Walk, North Greenwich, London, SE10 0NB

£1,550 PCM

1stavenue
Real Estate Services



TOTAL APPROX. FLOOR AREA 603 SQ.FT. (56.0 SQ.M.)

Whilst every attempt has been made to ensure the accuracy of the floor plan contained here, measurements of doors, windows, rooms and any other items are approximate and no responsibility is taken for any error, omission, or mis-statement. This plan is for illustrative purposes only and should be used as such by any prospective purchaser. The services, systems and appliances shown have not been tested and no guarantee as to their operability or efficiency can be given

Made with Metropix ©2018

Viewing by appointment with 1st avenue.

Call: 020 8293 8600

1st avenue, 128 Metcalfe Court, West Parkside, London SE10 0EL
email: info@1stavenue.co.uk

1stavenue
Real Estate Services