



The Glades, Coningham Road, London, W12 8BX

**Cow & Co**  
LONDON



GUIDE PRICE OF £450,000-550,000. A spacious two double bedroom ground floor apartment with direct access onto your own private garden. The property further benefits from an allocated parking space and is tucked away in a peaceful no through road location.

Coningham Road is a leafy residential street located within walking distance to the tube links at Shepherds Bush Market, Goldhawk Road and Shepherds Bush which provide access in and out of Central London. The Westfield Shopping Centre and Soho House are also nearby, along with the green spaces of Cathnor Park and Ravenscourt Park. For families, there is a selection of fantastic schools within close proximity, including St Stephens Primary School which has been rated 'outstanding' by Ofsted.



- Two double bedroom ground floor maisonette with direct access onto your own private garden
- Spacious living area
- Fitted kitchen
- Allocated off street parking space
- Own front door
- Popular location within walking distance local transport links and amenities
- No onwards chain
- Sole agents
- With its own garden and parking, lots of potential to make incredible

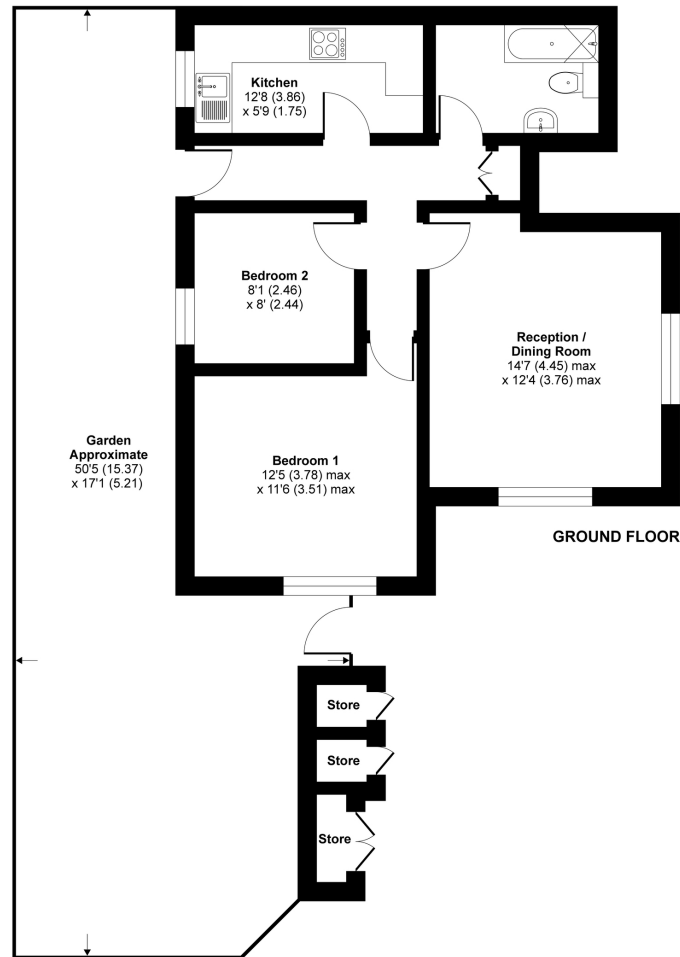
# The Glade, Coningham Road, London, W12

Approximate Area = 608 sq ft / 56 sq m

Outbuilding = 22 sq ft / 2 sq m

Total = 630 sq ft / 58 sq m

For identification only - Not to scale



Floor plan produced in accordance with RICS Property Measurement Standards incorporating International Property Measurement Standards (IPMS2 Residential). © nichecom 2021. Produced for Cow & Co Properties Ltd. REF: 721306

Tel: 0208 065 0010  
Email: [thehub@cowandco-london.com](mailto:thehub@cowandco-london.com)  
Web: [cowandco-london.com](http://cowandco-london.com)

Agents note: All measurements are approximate and whilst every attempt has been made to ensure accuracy they are for general guidance only and must not be relied on. The fixture and fittings referred to have not been tested and therefore no guarantee can be given that they are in working order. Internal photographs are reproduced for general information and it must not be inferred that any item shown is included with the property.

# Cow & Co

LONDON