



Ennerdale Road,
Formby, L37 2EA

£450,000

SM

STEPHANIE MACNAB
ESTATE AGENT

This TURN-KEY property won't disappoint when you view...

From the moment you cross the threshold, you will sense the time and effort spent making this property a CONTEMPORARY HOME that embraces MODERN LIVING. The LOUNGE is the perfect place to unwind and relax after a busy day. The KITCHEN/DINER is light, bright and spacious, and the French doors can be flung open to extend the entertaining space. The UTILITY ROOM and downstairs SHOWER ROOM are both practical and useful in a busy household.

Upstairs follows the same theme, and you will find FOUR BEDROOMS and a FAMILY BATHROOM. The LOFT is boarded with light and accessed via a ladder, which is great ADDITIONAL STORAGE.

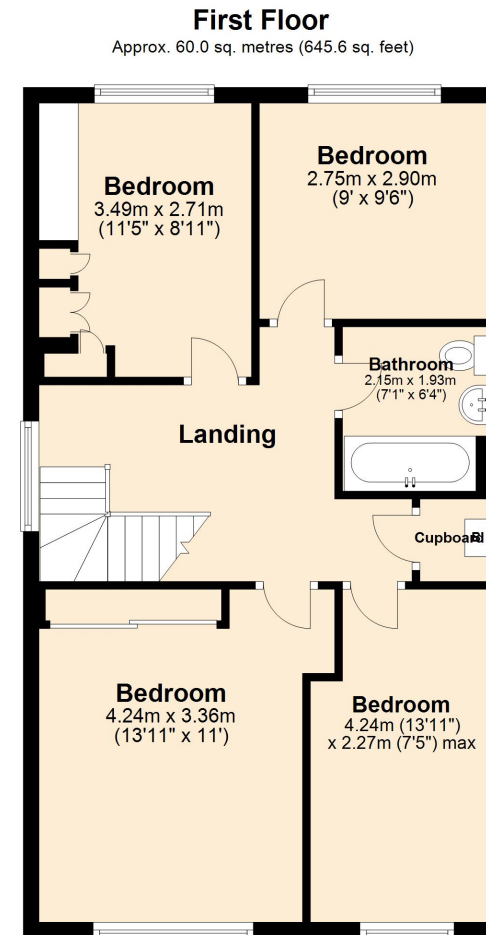
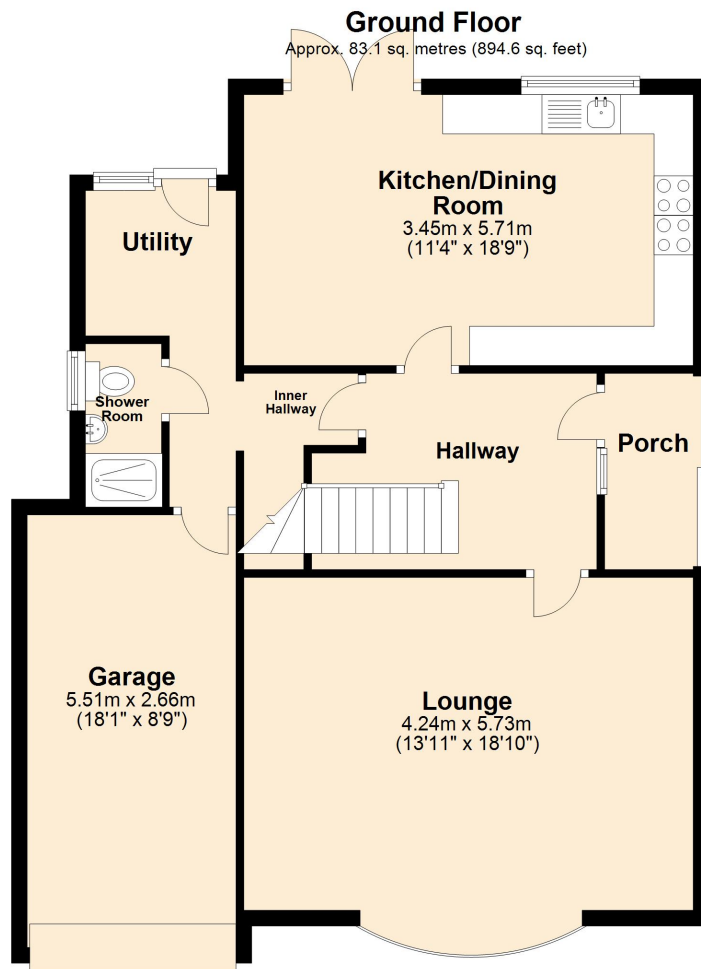
There is OFF-ROAD parking leading to the GARAGE. The REAR GARDEN is well-maintained and ideal for energetic children and pets.

This property is within walking distance to the VILLAGE, TRAIN STATION and several LOCAL SCHOOLS.

To view, call 01704 526 626. Follow us on Facebook and Instagram.







Total area: approx. 143.1 sq. metres (1540.3 sq. feet)

Plan produced using PlanUp.

