



hastings  
INTERNATIONAL

Sitka House

£650,000

## Sitka House, 20 Quebec Way, London SE16 7EU

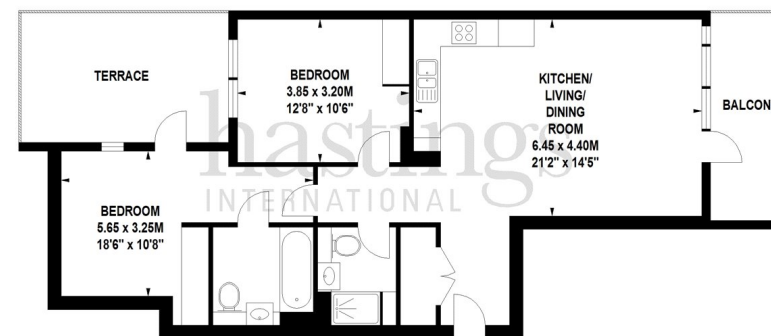
A beautifully presented triple aspect apartment with balcony and terrace, two bedrooms, two bathrooms and concierge facilities. Sitka House is a modern block located within sought after Quebec Quarter, conveniently located moments from Canada Water Station [Jubilee Line & Overground], Surrey Quays shopping centre and Stave Hill Ecological Park.

This stylish first floor, triple aspect apartment comprises entrance hall with storage and utility cupboard, impressive reception room with dining area, floor to ceiling windows, door to generous private balcony, stylish open plan fitted kitchen with stone work tops and integrated appliances, master bedroom with en-suite bathroom and fitted wardrobes and access to private terrace, guest bedroom two with fitted wardrobes and family showroom. Residents of Sitka House have the benefit of access to landscaped communal gardens and concierge facilities. Secure allocated parking available under separate negotiation. Canada Water station [Jubilee & Overground] is moments away together with Surrey Quays shopping centre and Stave Hill Ecological Park. EWS1 Compliant.

- Sitka House SE16
- Two Double Bedrooms
- Balcony And Terrace
- Pleasant Aspect
- Parking Available Under Separate Negotiation
- Triple Aspect Apartment
- Two Bathrooms
- High Specification Interior
- Concierge Facilities
- Excellent Location

### Quebec Quarter, SE16

Approximate gross internal area  
73.2 sq m / 788 sq ft



First Floor

#### Measurements taken from architect's plans

Illustration for identification purposes only, not to scale  
All measurements are maximum, and includes wardrobes and window bays where applicable







