



FELLS GULLIVER
ESTATE AGENTS

023 8028 4411
www.fellsgulliver.com

6 Princes Crescent, Lyndhurst, SO43 7BS

£300,000

- First floor purpose built maisonette
- Spacious living/dining room with balcony and direct views of Boltons Bench
- Electric heating and double glazing
- Quietly situated up a private driveway in Princes Crescent
- Conveniently located close to the village and open forest
- Two large double bedrooms
- Study area off the landing area
- Two allocated parking spaces





2



1



1

Situated only a short walk from the bustling High Street of Lyndhurst and with direct views of Boltons Bench is this fantastic two bedroom first floor maisonette.

Accessed via a private front door and your own stairwell the accommodation includes two very good sized double bedrooms, an L-shaped lounge which has both a lounge and dining area, modern kitchen and bathroom. A fabulous feature is the balcony which enjoys views over Boltons Bench and the open forest.

Located up a private driveway 6 Princes Crescent is a 1960's purpose built maisonette. Accessed via its own front door and stairwell the accommodation is situated on the first floor.

The landing is light and spacious with a recessed area, ideal for anyone that may work from home or need a study area. Each room is access directly from the landing area.

The sunny aspect lounge/dining room is an L-shaped space, featuring a comfortable lounge area and a separate area perfect for a dining table and chairs. A wall-mounted electric fireplace serves as the central focal point of the room, while large double-glazed sliding doors and windows flood the space with natural light from the south-facing aspect, offering access to the balcony and lovely views of the open forest.

The kitchen features a range of gloss white wall and base units, complemented by built-in appliances including a fridge/freezer, electric hob, oven with extractor above, and a washing machine.







The main principal bedroom is located to the front of the property and is a lovely spacious room with a double built in wardrobes and incredible views over to the open forest.

The second bedroom is also a spacious double room with roof top views across Princes Crescent and the forest beyond.

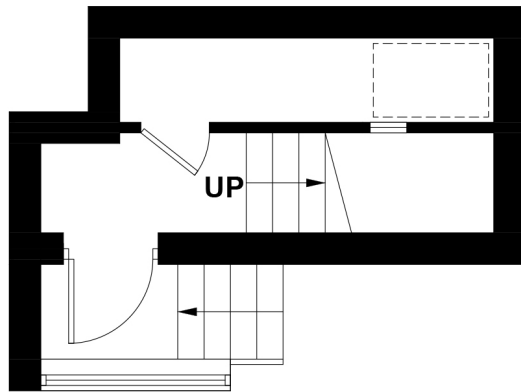
The bathroom includes a white three piece suite which includes a panel enclosed bath with electric shower over, Wash hand basin and WC.

The driveway is accessed off of princess crescent and is bordered by newly installed panelled fencing. Parking is available for a couple of cars and a timber shed offers you further storage.

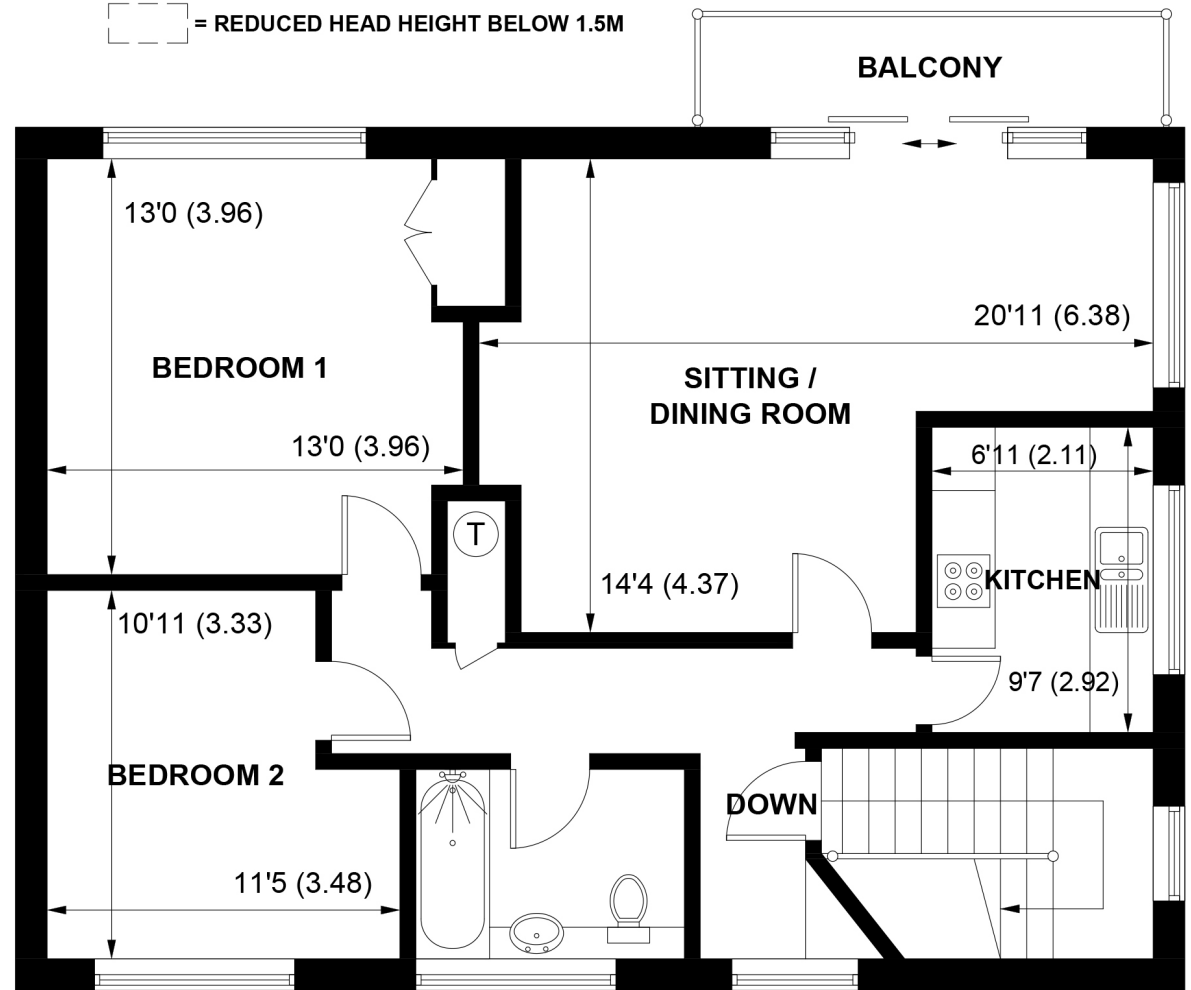




 = REDUCED HEAD HEIGHT BELOW 1.5M



GROUND FLOOR



FIRST FLOOR

APPROXIMATE GROSS INTERNAL AREA = 941 SQ FT / 87.4 SQ M

NOT TO SCALE (For illustrative purposes only as defined by RICS Code of Measuring Practice) 2024 ©

Produced by Emzo Marketing



FELLS GULLIVER
ESTATE AGENTS

023 8028 4411
www.fellsgulliver.com