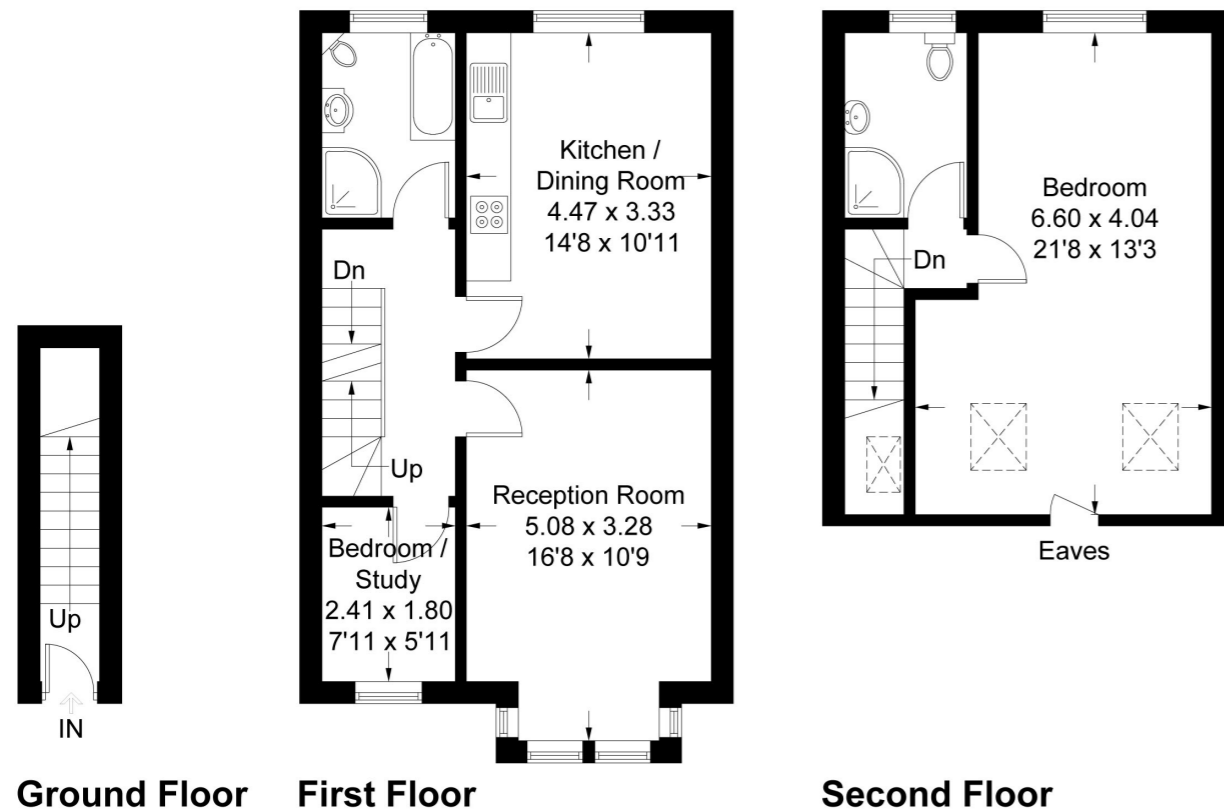


Camborne Avenue, W13

Approximate Gross Internal Area = 86 sq m / 926 sq ft



2 BEDROOM FLAT

Camborne Avenue, W13

£500,000

Classically Edwardian in layout offering versatile living, dining and sleeping space arranged over two floors.

This two bedroom home has been fully refurbished over the last couple of years and has over 900 years remaining on the lease.

FEATURES

- Two Bedrooms
- Kitchen/ Diner
- Two Receptions
- Moments from Northfields Tube
- Close to Fielding Primary School
- Recently Refurbished
- No Onward Chain
- 900+ Year Lease

Measured in accordance with RICS Code of Measuring Practice. To be used for identification and guidance purposes only.
Whilst every care is taken in the preparation of this plan, please check all dimensions, shapes and compass bearings before making any decisions reliant upon them.
www.london58.com © 2020 hello@london58.com



2 BEDROOM FLAT
Camborne Avenue, W13

Inside, you'll immediately notice the quality that runs throughout.

Moments from Fielding Primary School and the local connections are ideal for commuters with Ealing Broadway, Northfields tube and West Ealing Crossrail station only minutes away. A high standard of fixtures and fittings ensure this a turnkey solution for buyers wanting to move straight in.

