



6 Birch Road, Woolmer Green, Knebworth, Hertfordshire, SG3 6LW

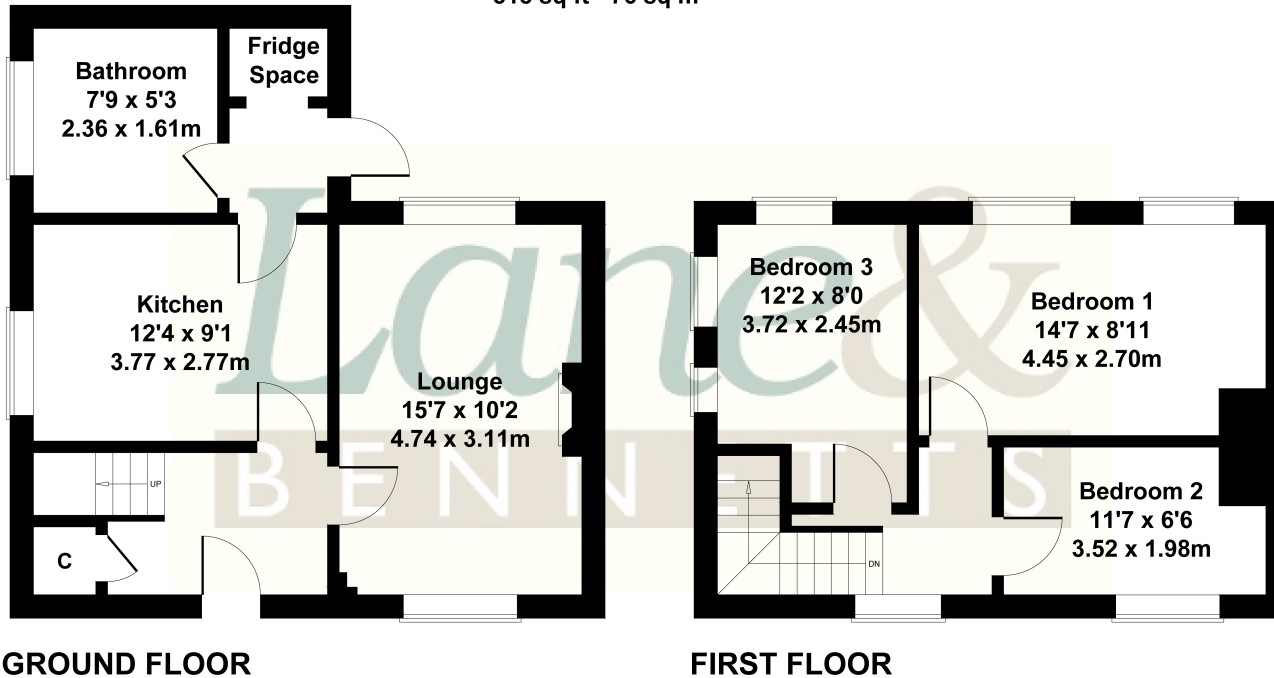
£500,000

RECENTLY REFURBISHED 1930's Three Bedroom Semi-Detached extended property, on a sizable plot situated in a private cul de sac, close to the centre of the hugely popular Village of Woolmer Green. Available chain free and eminently suitable for further extension to the rear or side aspects (Subject to planning permission. Newly installed fitted kitchen with appliances , a large lounge with space for an open fire or wood burner. Three double bedrooms, good sized bathroom. Off road driveway and single garage. beautiful presented and freshly decorated with original wood flooring.

Lane &
BENNETTS

6 Birch Road, Woolmer Green

Approximate Gross Internal Area
818 sq ft - 76 sq m



Not to Scale. Produced by The Plan Portal 2026
For Illustrative Purposes Only.

- CHAIN FREE
- 1930's THREE BEDROOM EXTENDED SEMI-DETACHED
- FRESHLY RE-DECORATED WITH PERIOD ASPECTS
- SIZABLE REAR GARDEN OFFERING OPPORTUNITY FOR FURTHER EXTENSIONS
- SMALL SOUGHT AFTER CUL DE SAC
- CLOSE TO ALL VILLAGE AMENITIES
- BRAND NEW FITTED KITCHEN WITH BUILT IN APPLIANCES
- GREAT ACCESS TO TWO STATIONS AND A1M MOTORWAY
- FREEHOLD | COUNCIL TAD BAND D | EPC BAND TBA

