



**GREGORY BROWN**  
RESIDENTIAL SALES & LETTINGS

£425,000 Freehold  
**FOR SALE**



## **Hengrove Crescent, Ashford, Surrey, TW15 3DG**

WELL PRESENTED & SPACIOUS TWO BEDROOM END-TERRACED PROPERTY SITUATED ALONG THIS SOUGHT AFTER ROAD IDEALLY LOCATED FOR EASY ACCESS TO ASHFORD TOWN CENTRE, MAINLINE TRAIN STATION, LOCAL MOTORWAY NETWORKS & HEATHROW AIRPORT. The property benefits from a spacious lounge/diner, separate modern fitted kitchen, two large double bedrooms, modern white bathroom suite, large secluded rear garden and off-street parking. Viewings Highly Recommended!

**Gregory Brown**

127a, High Street, Staines-upon-Thames, TW18 4PD

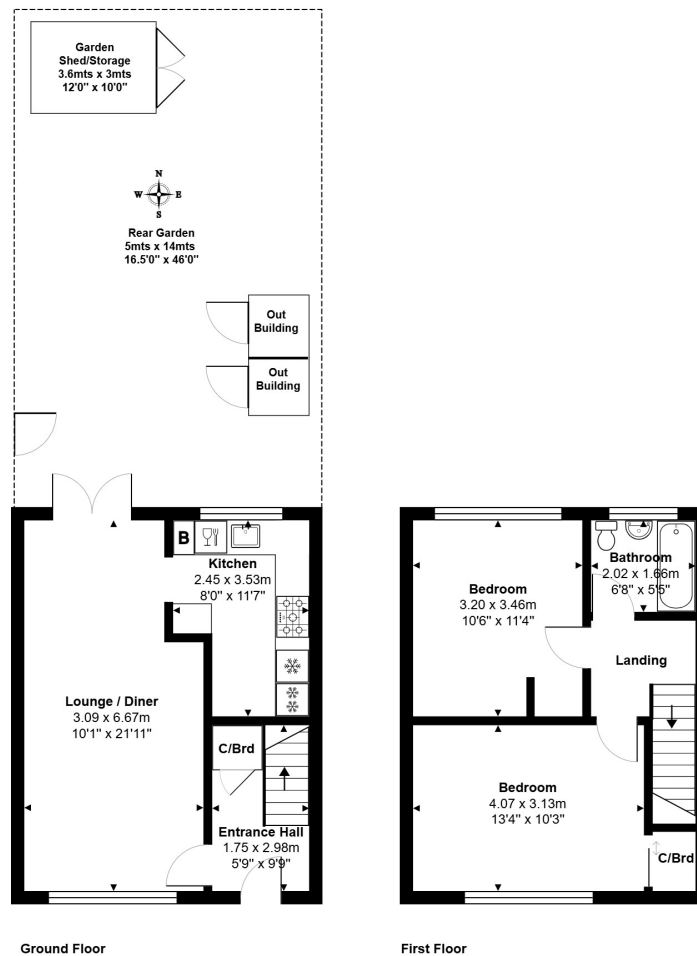
01784 451458

[staines@gregory-brown.co.uk](mailto:staines@gregory-brown.co.uk)

ROOM DESCRIPTIONS

\_\_\_\_\_

# FLOORPLAN



Total Area: 68.1 m<sup>2</sup> ... 733 ft<sup>2</sup>

All measurements are approximate and for display purposes only.

127a, High Street, Staines-upon-Thames, TW18 4PD

01784 451458

staines@gregory-brown.co.uk