



9 Whittle Court,  
Knowlhill, Milton Keynes, MK5 8FT

Tel: 01908 231 551  
mail@elevationstateagents.com



### 3 Carter Grove, Wolverton, Milton Keynes, Buckinghamshire, MK12 5QU

## £99,000 Share of Leasehold

- Two Bedroom Ground Floor Apartment
- Immaculate Throughout
- Sought After Area
- £276pm for rent & service charge
- 45% Shared Ownership
- 114 years left on the lease
- £2,500 fixtures and fittings
- EPC Rating



See our full selection of properties online at [www.elevationstateagents.com](http://www.elevationstateagents.com)



\*\*\*GROUND FLOOR SHARED OWNERSHIP APARTMENT\*\*\*

As you enter this gorgeous apartment, you are greeted by an open plan living area that is both bright and spacious, providing the perfect space for relaxation and entertainment. The large windows and juliet balcony allow plenty of natural light to flood in, creating a warm and welcoming atmosphere throughout. The chic and modern kitchen boasts a range of integrated appliances, making cooking and entertaining an absolute pleasure.

The apartment features two generously sized bedrooms, both of which offer plenty of natural light throughout. The contemporary bathroom is beautifully designed with modern fixtures and fittings, providing a luxurious space to unwind after a long day.

This stunning apartment is situated in a prime location in Wolverton, Milton Keynes, offering easy access to a range of amenities including shops, cafes, restaurants, parks and Wolverton Train Station. With its ground floor position, this apartment is ideal for those who prefer easy access and convenience.

### Open Plan Area

6.92m x 3.23m (22' 8" x 10' 7")

### Bedroom One

4.42m x 3.08m (14' 6" x 10' 1")

### Bedroom Two

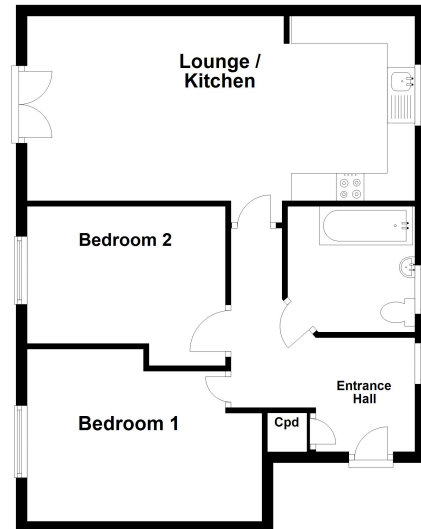
1.86m x 3.80m (6' 1" x 12' 6")

### Bathroom

### Disclaimer

Whilst we have endeavoured to prepare our sales particulars accurately none of the services, appliances or equipment have been tested. A buyer should satisfy themselves on such matters prior to purchase. Any measurements or distances mentioned in these particulars are for guide reference only. If such particulars are fundamental to a purchase, buyers should rely on their own enquiries. All enquiries should be directed to Elevation Estate Agents in the first instance.

Ground Floor



elevation estate agents  
Plan produced using PlanUp.