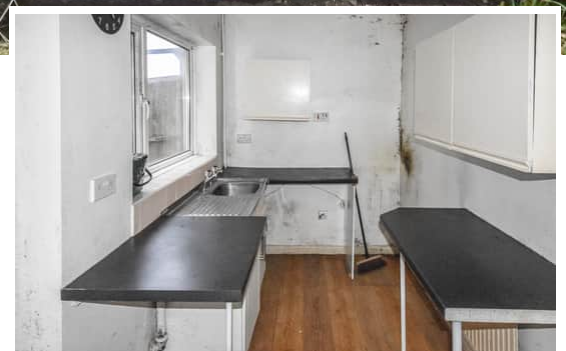




**60 Bethel Road, Llansamlet, Swansea, SA7
9QL**

Asking Price: £59,000

- A Two Bedroom Mid Terrace
- Ideal Investment Opportunity Property
- No Forward Chain
- Freehold
- First Floor Bathroom



Entrance

Entered via double glazed front door.

Lounge/Dining Room

6.764m x 3.045m (22' 2" x 10' 0")

A good size room, open plan effect with staircase giving access to the first floor double glazed windows to front and rear and door to:-

Kitchen

3.623m x 1.863m (11' 11" x 6' 1")

fitted with a selection base units, single drainer sink unit with hot and cold mixer taps over, plumbing for automatic washing machine, double glazed door giving access to the side and double glazed window to the side.

First Floor Landing

With attic hatch and doors to:-

Bedroom One

3.261m x 2.395m (10' 8" x 7' 10")

With medium oak effect laminate flooring and double glazed window to the front.

Bedroom Two

3.544m x 2.350m (11' 8" x 7' 9")

With double glazed window to the rear.

Bathroom

3.584m x 2.350m (11' 9" x 7' 9")

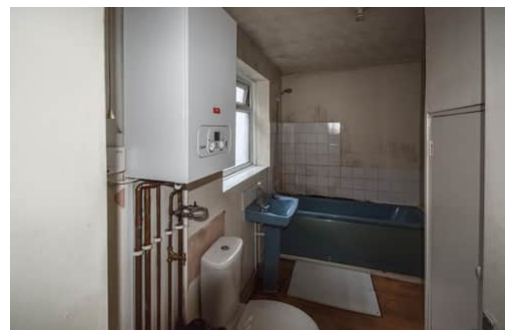
A three piece suite comprising panel bath, low level W.C, wash hand basin, textured ceiling, wall mounted boiler (supplying domestic hot water and gas central heating) and double glazed frosted window to the side.

External

Small steps to the front with garden laid to lawn.

Disclaimer

Whilst these particulars are believed to be accurate, they are set for guidance only. Fresh have not tested any fixtures, fittings or services and cannot confirm that they are in working order or fit for purpose. Any floor plan provided is intended as a general guide to the layout of the accommodation and is not drawn to scale. We cannot confirm the tenure of the property is accurate and advise all buyers to obtain verification from their solicitor or surveyor. We strongly recommend that all the information which we provide about the property is verified by yourself or your advisers.



FRESH

We deliver on Service ...

