

# Norridge View

Warminster, BA12 8TA

COOPER  
AND  
TANNER



It is absolutely paramount that you check the accuracy of all the information included in these sales particulars. If you approve please sign and date below.

Vendor(s) Signature:

Dated:



## £299,950 Freehold

This three bedroom detached house is located in popular location within easy walking distance to the town centre. The property is need of updating but offers scope to update and extend. It offers a garage and driveway parking. It comes to the market with NO ONWARD CHAIN.

# Norridge View

## Warminster

### BA12 8TA

 3  1  1 EPC C

## £299,950 Freehold

### DESCRIPTION

This three bedroom detached house is located in popular location within easy walking distance to the town centre. The property is need of updating but offers scope to update and extend. It offers a garage and driveway parking. It comes to the market with NO ONWARD CHAIN. In brief the accommodation comprises: entrance hall with stairs rising to the first floor, cloakroom, large sitting room with an archway into the dining room with sliding doors onto the patio. Kitchen with a range of wall and base units with worksurface over, a door then leads to the utility room which has a door to the rear garden. Leading upstairs there are three bedrooms and a family bathroom.

### OUTSIDE

At the front of property there is a driveway leading to the garage, there is a lawn at the front and hedging to the side. At the rear of the property there is a patio, the garden s private and is full enclosed. There is a path at the side with gated access to the front.

### LOCATION

The town of Warminster offers a wide range of shopping and leisure facilities to include library, sports centre, swimming pool, schools, churches, doctors' and dentists' surgeries, hospital and post office. Warminster also benefits from a main line railway station to London Waterloo whilst the nearby A303 provides excellent road links to London to the east and Exeter to the west. Local attractions include Longleat House and Safari Park, Shearwater Lake, Stourhead and Salisbury Plain.

### COUNCIL TAX

Band ' D '







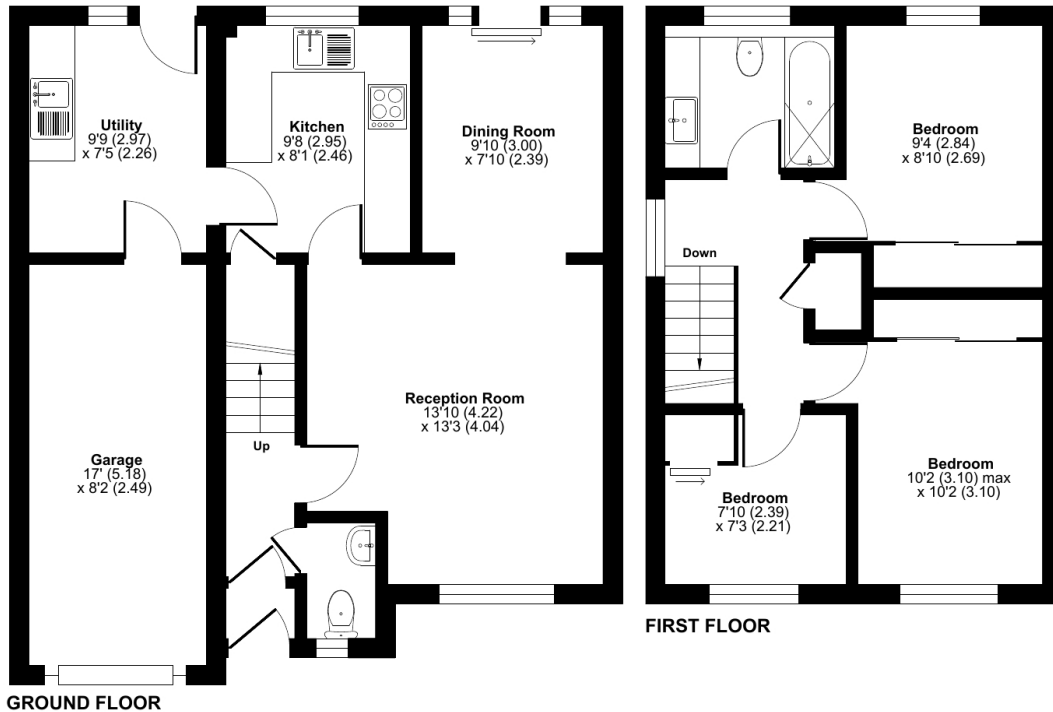
## Norridge View, Warminster, BA12

Approximate Area = 888 sq ft / 82.4 sq m

Garage = 133 sq ft / 12.3 sq m

Total = 1021 sq ft / 94.7 sq m

For identification only - Not to scale



Floor plan produced in accordance with RICS Property Measurement Standards incorporating International Property Measurement Standards (IPMS2 Residential). © nitchecom 2024. Produced for Cooper and Tanner. REF: 1169839

### WARMINSTER OFFICE

Telephone 01985 215579

48-50, Market Place, Warminster, Wiltshire BA12 9AN

[warminster@cooperandtanner.co.uk](mailto:warminster@cooperandtanner.co.uk)

**COOPER  
AND  
TANNER**

Important Notice: These particulars are set out as a general outline only for the guidance of intended purchasers and do not constitute, nor constitute part of, an offer or contract. All descriptions, dimensions, reference to condition and necessary permissions for use and occupation, warranties and other details are given without responsibility and any intending purchasers should not rely on the m as statements or representations of fact but must satisfy themselves by inspection or otherwise as to the correctness of each of them.

