





- Spacious Semi-Detached House
- Three Bedrooms
- Large Lounge Dining Room
- Modern Fitted Kitchen
- Mature Gardens
- Garage & Driveway

### Description

This is a spacious and well-presented semi-detached house, which is located in an extremely sought after location close to the village centre. The property features gas central heating and PVCu double glazing and the accommodation comprises: Entrance hall, cloakroom/WC, lounge, dining room, fitted kitchen, first floor landing, box room, three bedrooms and bathroom. Mature southerly gardens, detached garage and block paved driveway. The property is available unfurnished for immediate occupation and restrictions apply.



**Location**  
**Tenure**

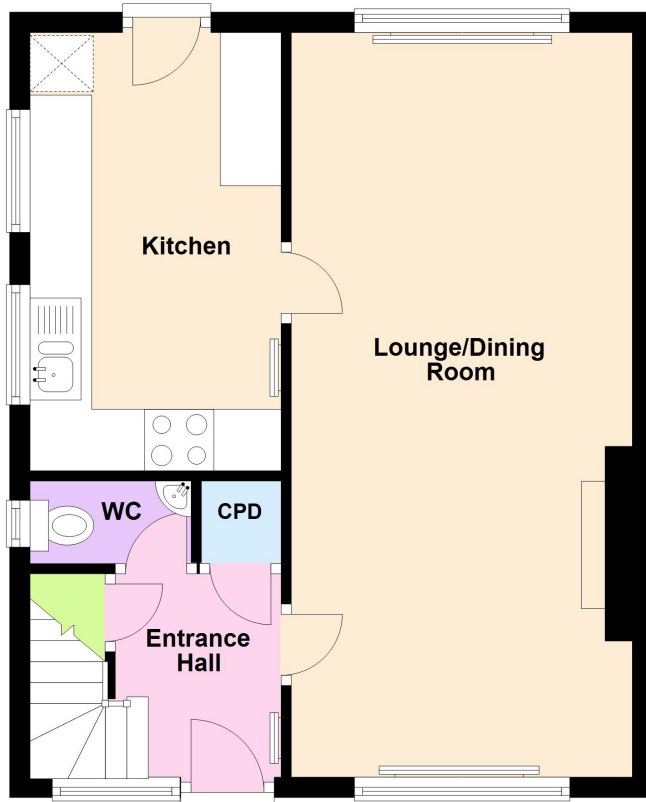
**EPC Rating:**

**Important Notes**  
Type Here



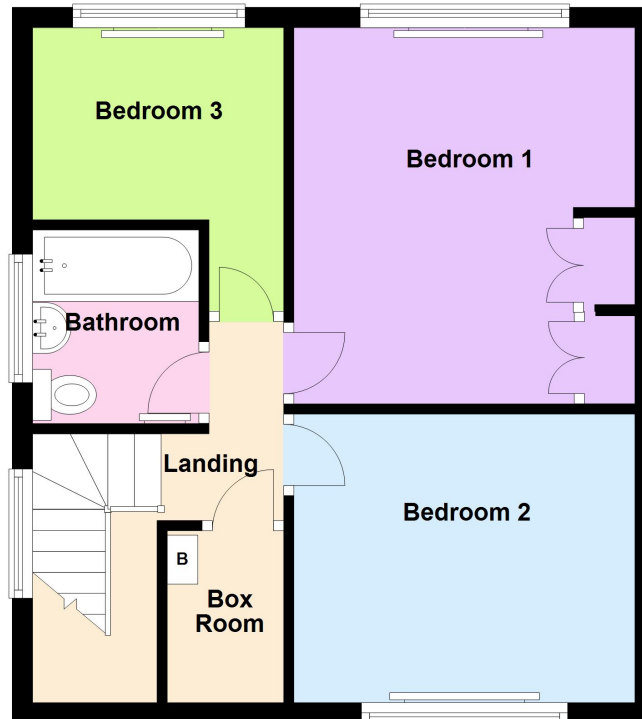
## Ground Floor

Approx. 43.1 sq. metres (464.2 sq. feet)



## First Floor

Approx. 39.1 sq. metres (420.8 sq. feet)



Total area: approx. 82.2 sq. metres (885.0 sq. feet)

