



15 Cherry Trees, Lower Stondon, Henlow, Bedfordshire, SG16 6DT

£350,000

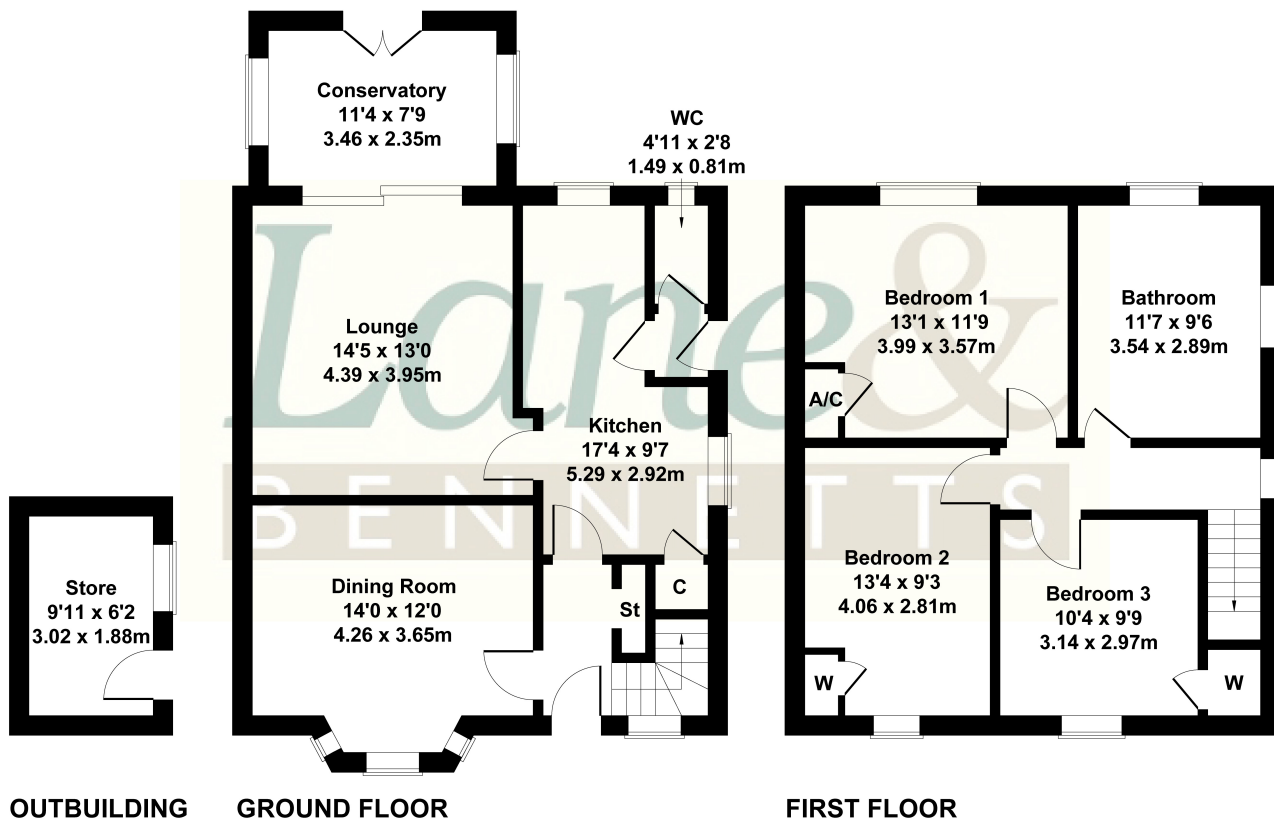
Classic and generously proportioned semi-detached family home situated on a good-sized plot with great potential. Although in need of some updating the property still offers much charm and character including fireplace surrounds in two of the bedrooms, original doors with Bakelite handles and the stained-glass stair window. Offered with two good sized reception rooms with a feature fireplace and beamed ceiling to the lounge, adjoining conservatory, large kitchen/breakfast room and three good sized bedrooms. Other benefits include a generous sized family bathroom and a large loft. Outside is a mature 100ft garden with brick-built store and off-road parking to the rear. An excellent blank canvas - well worth a view.





## 15 Cherry Trees

Approximate Gross Internal Area  
1324 sq ft - 123 sq m



Not to Scale. Produced by The Plan Portal 2025  
For Illustrative Purposes Only.

- OPEN DAY 15th FEBRUARY
- CLASSIC SEMI-DETACHED FAMILY HOME ON GOOD SIZED PLOT
- SOME UPDATING REQUIRED BUT STILL OFFERS MANY ORIGINAL FEATURES
- NO CHAIN
- LOUNGE WITH FEATURE FIREPLACE + BEAMED CEILING
- DINING ROOM + CONSERVATORY
- THREE GENEROUS SIZED BEDROOMS + LARGE BATHROOM
- GREAT POTENTIAL TO EXTEND + LARGE LOFT
- 100FT REAR GARDEN + BRICK STORE
- AMPLE OFF ROAD PARKING + GARAGE SPACE

