



Highview Gardens, Potters Bar, Hertfordshire, EN6

£558,500

- **THREE DOUBLE BEDROOMS**
- **OPEN PLAN KITCHEN LOUNGE
DINER**
- **BI-FOLDING DOORS**
- **OFF STREET PARKING**
- **RECENTLY BUILT HOME**
- **DOWNSTAIRS WC**
- **SIDE ACCESS**
- **PRIVATE REAR GARDEN**

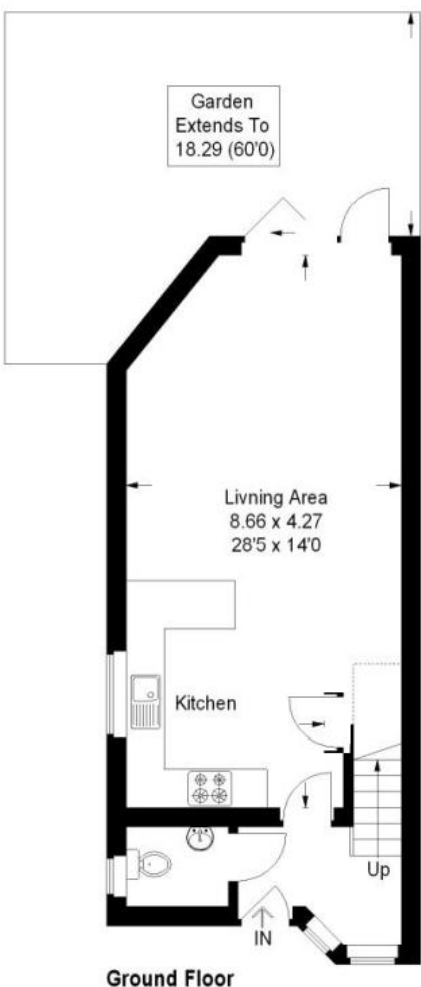
Highview Gardens, Potters Bar, Hertfordshire, . EN6

£558,500 Freehold

A delightful three double bedroom end of terrace modern family home ideally located within walking distance to Potters Bar High Street, locals shops and amenities and with a stones throw from Oakmere Park.

This home was built in 2016 and benefits from a spacious open plan kitchen / dining / living room with bi-folding doors over looking the garden, and a downstairs WC. The first floor consists of modern bathroom and two double bedrooms, and the second floor a double bedroom with views over the garden.

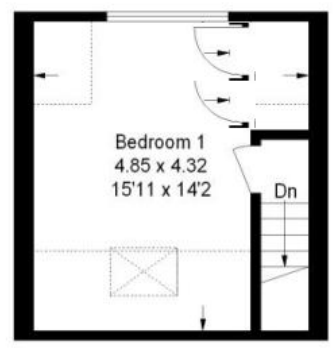
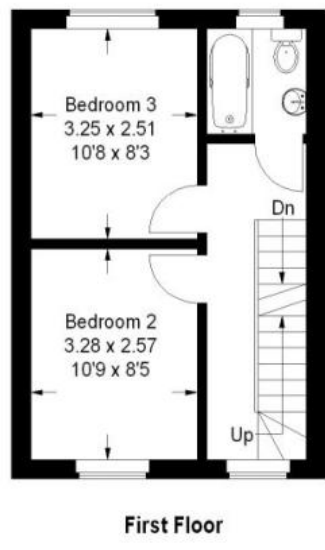
Viewing advised.



Approximate Gross Internal Area
Ground Floor = 43.9 sq m / 472 sq ft
First Floor = 29.0 sq m / 312 sq ft
Second Floor = 20.9 sq m / 225 sq ft
Total = 93.8 sq m / 1009 sq ft



[Dashed line symbol] = Reduced headroom below 1.5 m / 5'0



Second Floor

