



Solicitors & Estate Agents

# 115

Primrose Avenue, Rosyth, Dunfermline, KY11 2TX



*Working harder for you*



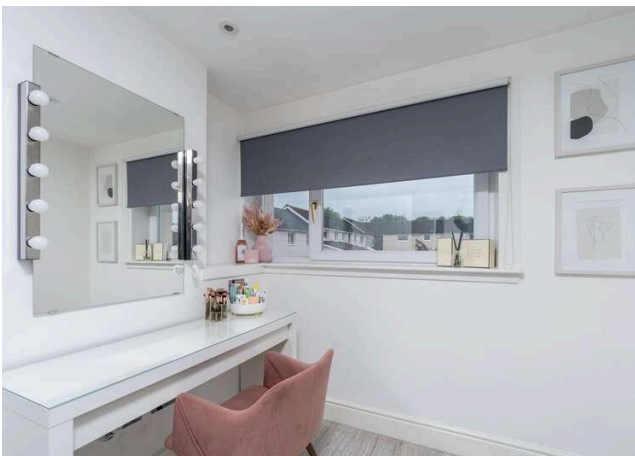
3 bedrooms



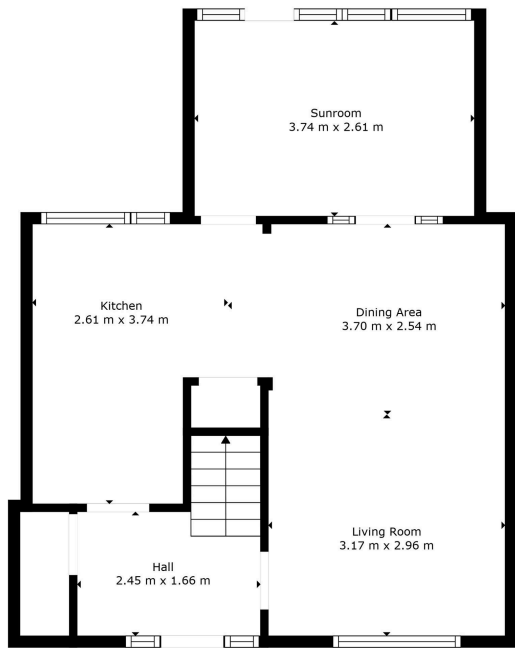
1 public



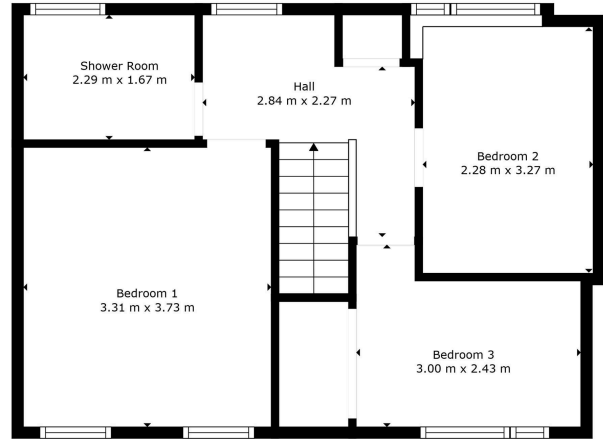
1 bathroom



- + · A spacious and well-presented, three-bedroom terraced home offered to the market in move in condition
- + · Excellent location with a variety of amenities close to hand including various shops, restaurants and several primary schools within Rosyth
- + · Excellent for transport links with a railway station within Rosyth and nearby Inverkeithing offering a regular service to and from Edinburgh. Park and Ride services in Inverkeithing and Halbeath and easy access to the M90 motorway
- + · Additional amenities available in nearby Dunfermline, in including Fife Leisure Park, offering various coffee shops, restaurants and leisure facilities, including a ten-screen cinema
- + · Modern front facing lounge with access into sunroom at the rear, currently utilised as a dining room. Patio doors leading to enclosed gardens
- + · Well-equipped kitchen with a good range of floor and wall mounted storage, good worktop space and room for free standing appliances with access into rear garden
- + · First floor offers three bedrooms with the master bedroom and bedroom two boasting built in wardrobe space
- + · Modern shower room with WC and wash hand basin. Mains fed shower
- + · Private, and easy maintenance gardens to the rear with artificial turf and fantastic summer house currently utilised as a workspace
- + · Gas central heating system and double glazing
- + · A perfect first-time home within a sought-after locale.



Floor 1



Floor 2



Measurements Are Calculated By Cubicasa Technology. Deemed Highly Reliable But Not Guaranteed.



Living Room	3.17 m x 2.96 m / 10'5" x 9'9"	Bedroom 3	3.00 m x 2.43 m / 9'10" x 8'0"
Dining Area	3.70 m x 2.54 m / 12'2" x 8'4"	Shower Room	2.29 m x 1.67 m / 7'6" x 5'6"
Kitchen	2.61 m x 3.74 m / 8'7" x 12'3"	Sunroom	3.74 m x 2.61 m / 12'3" x 8'7"
Bedroom 1	3.31 m x 3.73 m / 10'10" x 12'3"		
Bedroom 2	2.28 m x 3.27 m / 7'6" x 10'9"		



Sharing is caring!

6/8 Bonnar Street,  
Dunfermline KY12 7JR

T: 01383 629720 F: 01383 621333, DX DF69



W: [maloco.co.uk](http://maloco.co.uk)