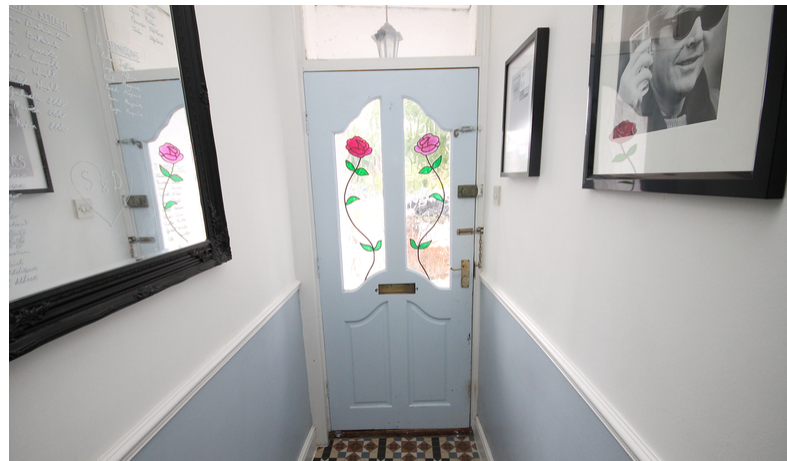
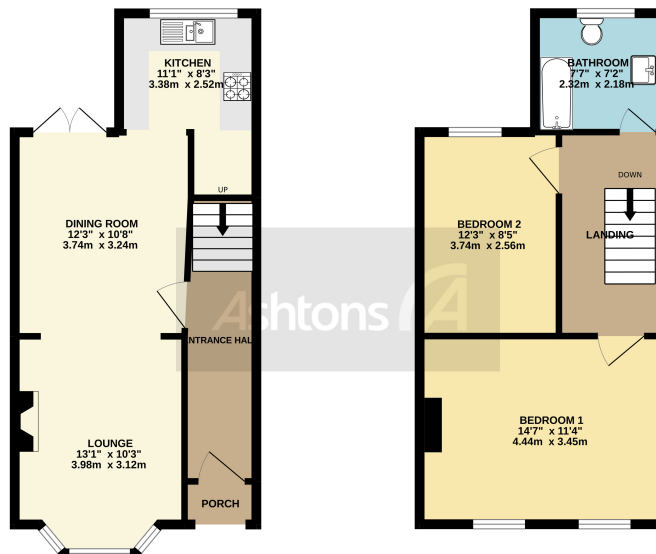




*6 Whitefield Road, Stockton Heath, Warrington,
Cheshire. WA4 6LZ.
£285,000*

Sought After Location | Open pLan arrangement | Two Bedrooms | Stylish Kitchen & Bathroom |





While every attempt has been made to ensure the accuracy of the floorplan contained here, measurements of floors, windows, doors and any other items are approximate and no responsibility is taken for any error, omission or mis-statement. This plan is for illustrative purposes only and should be used as such by any prospective purchaser. The actual layout and dimensions should be based on the actual floor plan and any guarantee as to their accuracy or effect is not to be given. Made with Metropix 6.0.0.0

****BAY FRONTED TERRACED - OPEN PLAN LOUNGE / DINER - STUNNING FITTED KITCHEN - TWO DOUBLE BEDROOMS - STYLISH BATHROOM****

In a highly desirable village location, this superb bay-fronted mid-terraced house is just seconds' walk from Stockton Heaths shops and restaurants. This superb period property will be of huge appeal to first-time buyers and downsizers alike and with its sort, after address this offers a fantastic opportunity to purchase.

Location



Contact your local office to arrange a viewing:

Padgate: 01925 479334
Great Sankey: 01925 454300
Winwick: 01925 232146
Stockton Heath: 01925 453400
St.Helens: 01744 754120
Wigan: 01942 498862
Culcheth: 01925 764744
Ashton-In-Makerfield: 01942 364446
Newton-Le-Willows: 01925 907770
Commercial Office: 01925 907709
Lettings Head Office: 01925 873533
Financial Services: 01925 221234

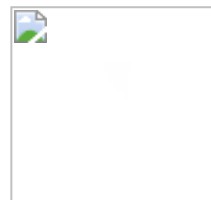
Viewing Arrangements

Viewing is strictly by appointment only through Ashtons Estate Agency.

Disclaimer Property Details

These particulars, whilst being believed to be accurate are set out as a general outline only for guidance and do not constitute any part of an offer or contract. Intending purchasers should not rely on them as statements of representation of fact, but must satisfy themselves by inspection or otherwise as to their accuracy. We have not carried out a detailed survey nor tested the services, appliances and specific furnishings. The measurements given are approximate. No person in this firm's employment has the authority to make or give any representation or warranty in respect of the property.

All details, photographs and floorplans are the copyright of Ashtons Estate Agency.



How much you can borrow?
Speak to a mortgage expert in your local office.

Ashtons Financial Services

Ashtons.net rightmove

PrimeLocation.com Zoopla.co.uk

Ashtons