



9 Whittle Court,
Knowlhill, Milton Keynes, MK5 8FT

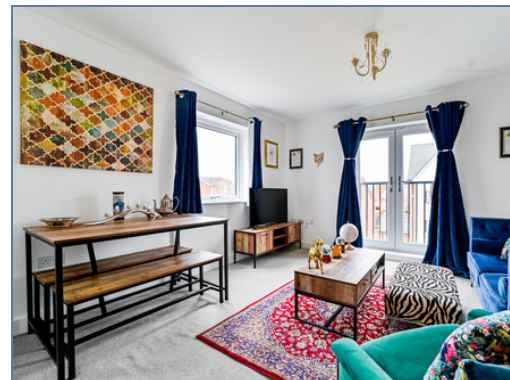
Tel: 01908 231 551
mail@elevationstateagents.com



**Flat 7, 28 Galapagos Grove, Bletchley,
Milton Keynes, Buckinghamshire, MK3 5RZ**

£227,500 Leasehold

- Spacious Two Bedroom Apartment
- Sought After Area
- Parking for One Car
- Bathroom & Ensuite
- 122 Years left on the lease
- Fully Integrated
- EPC- B
- Council tax band - B
- EPC Rating



See our full selection of properties online at www.elevationstateagents.com



Spacious first floor two bedroom, two bath apartment with allocated parking.

The open plan living room offers a juliet balcony allowing for lots of natural light. The kitchen is fully integrated and finished to a high spec. There are two double bedrooms both are carpeted throughout. The master bedroom has the luxury of an ensuite shower room and finally there is the main bathroom which comprises of a bath with a glass screen door with an overhead shower, a pedestal basin and w/c.

Newton Leys is a very popular and sought-after area. It has connection the A4146, A5 and the M1. It is within close proximity to the Newton Leys District Centre offering takeaways and an Asda. A lovely walk area is Willow Lake Park, a picturesque perfect walk for families and dog lovers.

Disclaimer

Whilst we have endeavoured to prepare our sales particulars accurately none of the services, appliances or equipment have been tested. A buyer should satisfy themselves on such matters prior to purchase. Any measurements or distances mentioned in these particulars are for guide reference only. If such particulars are fundamental to a purchase, buyers should rely on their own enquiries. All enquiries should be directed to Elevation Estate Agents in the first instance.

