

# HARE MARSH

LONDON E2 6FF



THE PROPERTY BROKERS

To Let

- 455 sqft (approx.)
- 1 bed 1 bath
- Balcony
- Secure underground parking
- Wooden floors throughout

Located in a fantastic area between, Shoreditch High Street and Bethnal Green is this modern circa 455sqft one bedroom apartment with balcony and secure underground parking.

This apartment benefits from wooden floors throughout, with a bright and airy living space opening onto the balcony. The separate kitchen is fully equipped with integrated appliances. The bathroom comes with a large bathtub with shower and is adjacent to the very well sized double bedroom.

Great for quick access to transport with Shoreditch High Street and Bethnal Green Stations only a short walk away.



# HARE MARSH

LONDON E2 6FF

Available mid July and offered Furnished.





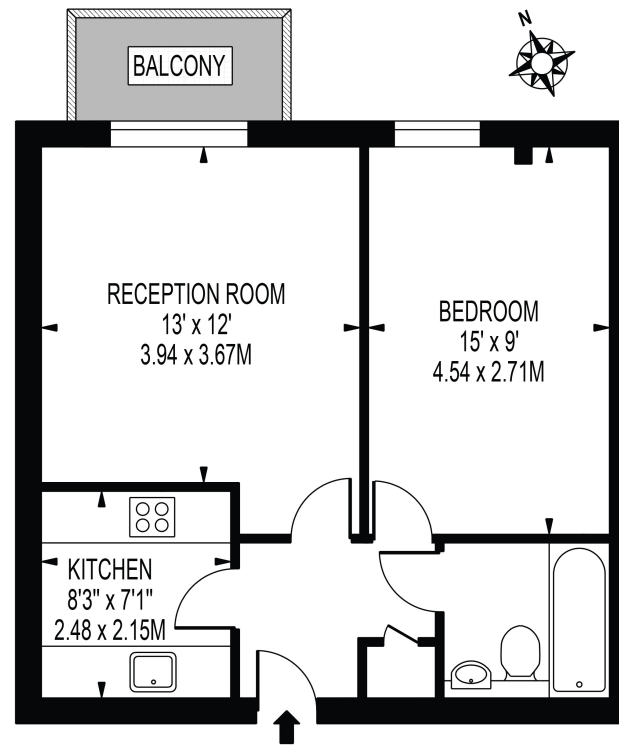
# HARE MARSH

LONDON E2 6FF



## HARE MARSH

APPROXIMATE GROSS INTERNAL FLOOR AREA: 455 SQ FT - 42.24 SQ M



THIRD FLOOR



FOR ILLUSTRATION PURPOSES ONLY

THIS FLOOR PLAN SHOULD BE USED AS A GENERAL OUTLINE FOR GUIDANCE ONLY AND DOES NOT CONSTITUTE IN WHOLE OR IN PART AN OFFER OR CONTRACT. ANY INTENDING PURCHASER OR LESSEE SHOULD SATISFY THEMSELVES BY INSPECTION, SEARCHES, ENQUIRIES AND FULL SURVEY AS TO THE CORRECTNESS OF EACH STATEMENT. ANY AREAS, MEASUREMENTS OR DISTANCES QUOTED ARE APPROXIMATE AND SHOULD NOT BE USED TO VALUE A PROPERTY OR BE THE BASIS OF ANY SALE OR LET.



SALES  
LETTINGS  
OFF MARKET  
ACQUISITIONS  
DEVELOPMENT  
COMMERCIAL  
VALUATIONS

**TOBIAS ALLAN**

*Director*

07970 963 478

**JAMES DANTON**

*Director*

07930 858 612

**ADAM JONES**

*Director*

07769 275 027

