



Alton Close, Hightown,
L38 9GE

Offers Over £250,000

SM

STEPHANIE MACNAB
ESTATE AGENT

Detached Family Home in a Quiet Coastal Setting – Hightown

Situated in a peaceful cul-de-sac within the sought-after village of Hightown, this DETACHED, THREE-bedroom home is perfect for those seeking a balance of tranquillity and convenience. With the BEACH and COASTAL WALKS just moments away, and excellent transport links close at hand, this property offers an exceptional lifestyle opportunity.

The accommodation briefly comprises a welcoming entrance porch and hallway, a bright and airy front lounge, and a separate kitchen that flows seamlessly into the conservatory, providing access to the rear garden. Upstairs, there are three well-sized bedrooms and a family bathroom.

Externally, the property benefits from a driveway with off street parking, a neat front garden, and a sun drenched SOUTH FACING rear garden with a paved patio, a well-maintained lawn, and mature borders. There is also additional space to the side of the property, offering potential for future extension (subject to the necessary consents).

With gas central heating and double glazing throughout, this well-maintained home is move-in ready. Whether you're looking for a family home or a retreat near the coast, this property is sure to impress. Early viewing is highly recommended.

Don't miss your chance to view – book your appointment today before it's too late! Call us on 01704 516 626 to book your viewing.

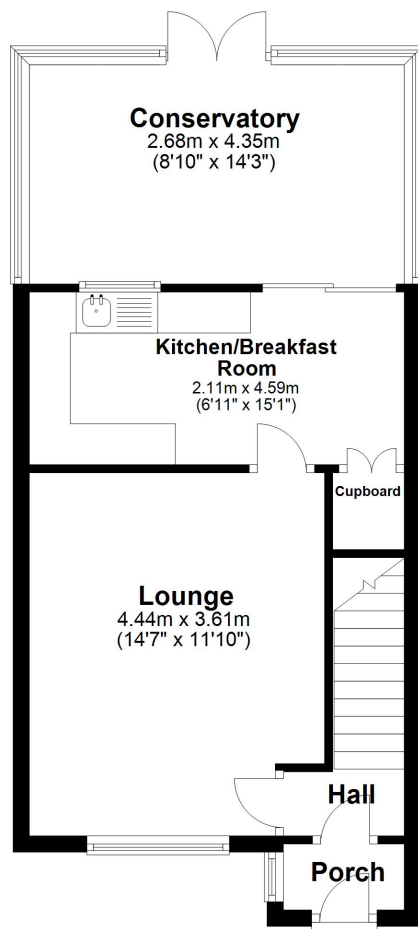
Follow us on Facebook and Instagram.





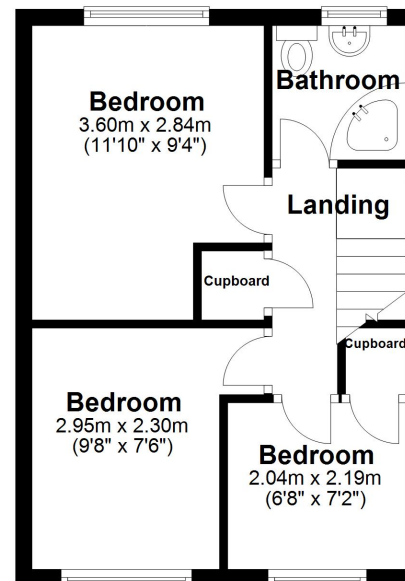
Ground Floor

Approx. 44.0 sq. metres (473.4 sq. feet)



First Floor

Approx. 30.6 sq. metres (329.6 sq. feet)



Total area: approx. 74.6 sq. metres (803.0 sq. feet)

Plan produced using PlanUp.

Energy Efficiency Rating		
	Current	Potential
Very energy efficient - lower running costs		
(92+) A		85
(81-91) B		
(69-80) C		
(55-68) D	57	
(39-54) E		
(21-38) F		
(1-20) G		
Not energy efficient - higher running costs		
England, Scotland & Wales		

EU Directive
2002/91/EC



