





A modern, three bedroom detached family home on a popular development.

- Detached Family Home
- Dual Aspect Lounge
- Large Kitchen Dining Room
- Three Bedrooms
- Two Bath/Shower Rooms
- Good Size Rear Garden
- Two/Three Car Driveway

Description

A modern, detached family home, located on a pretty block paved road at the back of the development. The property is extremely well presented with PVCu double glazed windows and gas central heating and comprises: Entrance hall, dual aspect lounge, large kitchen dining room and cloakroom/WC on the ground floor along with a landing, three bedrooms, en-suite shower room and bathroom on the first floor. Outside there is a small open plan front garden a good size rear garden and to the side there is a private driveway with parking for two/three cars.



Location

Local amenities are well catered for with shops at the local centre on Winnington Urban Village, which offer everything you could want or need. Winnington Park Community Primary School (Ofsted Good) serves the area and there are two local high schools located in Hartford and Weaverham. Three railway stations serve the area with the West Coast Main Line service running through Hartford, enabling access to London within two hours. Trains to Manchester and Chester run from Northwich and Greenbank stations. The A556 and A49 easily facilitate access to the region's major road network with Manchester and Liverpool airports both within 20 miles. Nearby Northwich caters for a more comprehensive range of amenities, including leading supermarkets with Waitrose, Sainsbury's and Tesco all represented.

Tenure

FREEHOLD

EPC Rating: B

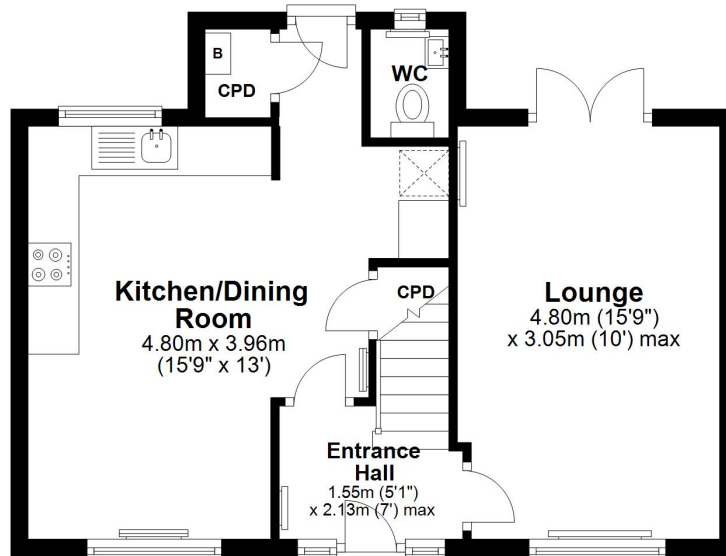
Important Notes

Type Here



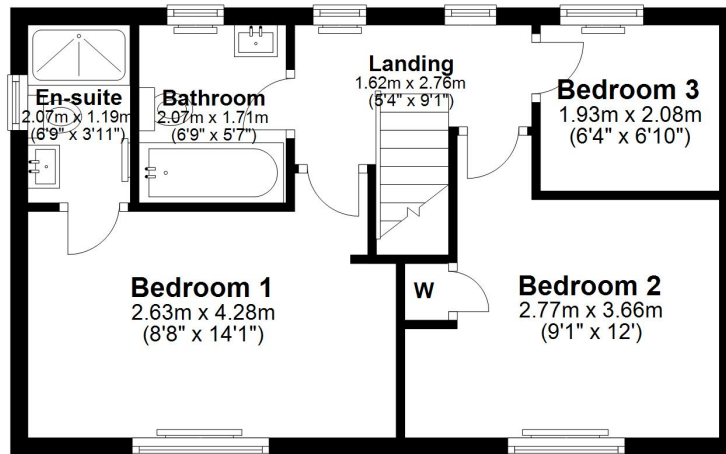
Ground Floor

Approx. 41.8 sq. metres (449.8 sq. feet)



First Floor

Approx. 38.6 sq. metres (415.4 sq. feet)



Total area: approx. 80.4 sq. metres (865.2 sq. feet)



These particulars, whilst believed to be accurate are set out as a general outline only for guidance and do not constitute any part of an offer or contract. Intending purchasers should not rely on them as statements of representation of fact, but must satisfy themselves by inspection or otherwise as to their accuracy. All measurements quoted are approximate. We are unable to confirm the working order of any fixtures and fittings including appliances that are included in these particulars. No person in this firm's employment has the authority to make or give any representation or warranty in respect of the property.