



This perfect first time purchase is located on a cul de sac close to Slough town centre. Excellent transport links are available with Slough train station (Elizabeth Line) only 0.4 miles away and M4 junction 6 easily accessible.

The property itself is located on the first floor and has int's own private entrance. Internally the property comprises of TWO good size double bedrooms, spacious lounge area, separate family bathroom and modern kitchen. The property has been well maintained throughout.




To the rear of the property there is a private garden space which is ideal to be enjoyed in the summer months. The property benefits from plenty of on street parking located on the cul de sac.

Sold with NO ONWARD CHAIN and ready to move to your desired timescales.



Property Information

-  SOLD WITH NO ONWARD CHAIN
-  GARDEN
-  GOOD CONDITION THROUGHOUT
-  GAS CENTRAL HEATING
-  TWO BEDROOM FIRST FLOOR MAISONETTE
-  DRIVEWAY PARKING
-  0.4 MILES TO SLOUGH STATION (ELIZABETH LINE)

					
x2	x1	x1	x1	Y	N
Bedrooms	Reception Rooms	Bathrooms	Parking Spaces	Garden	Garage

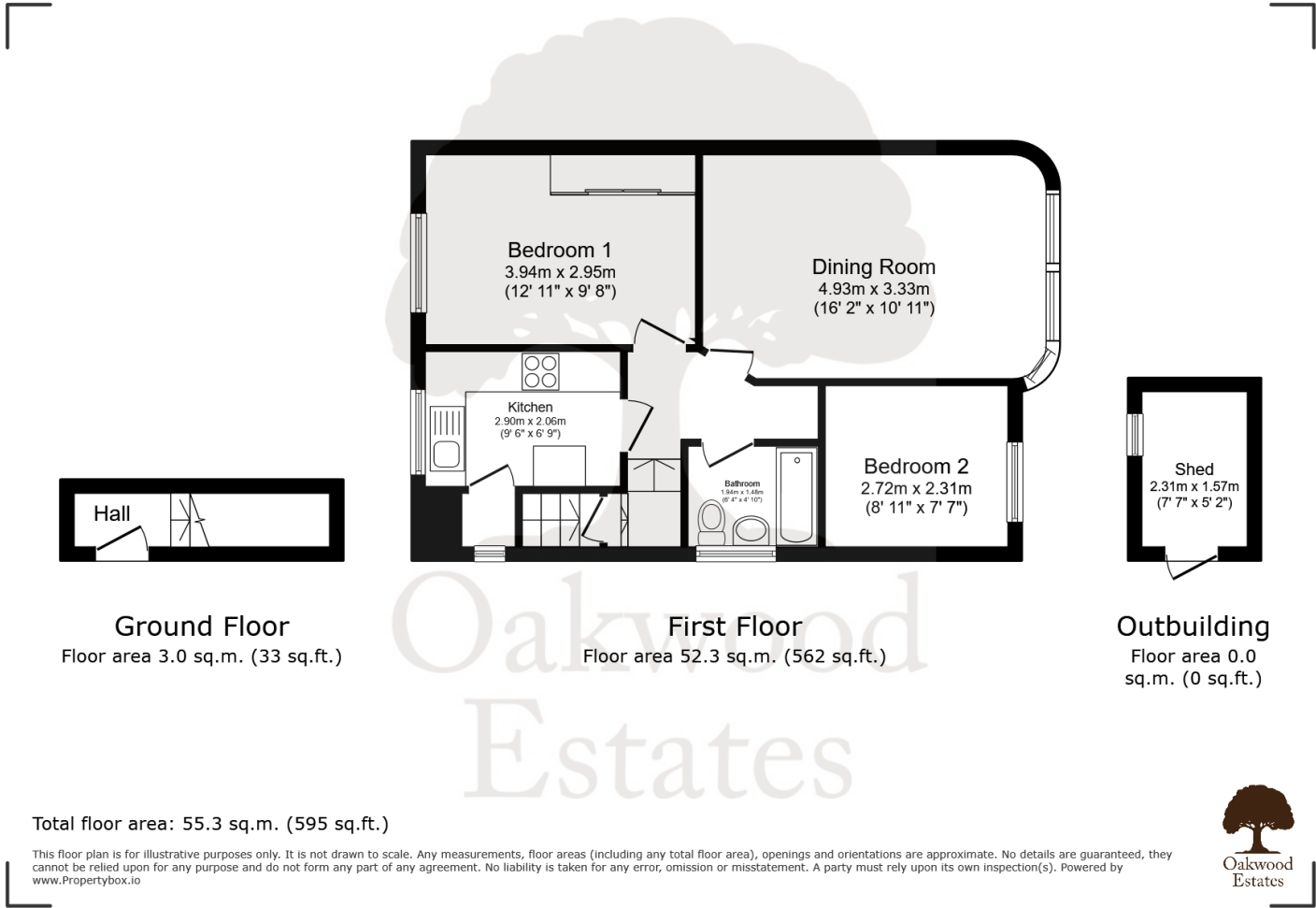
Transport Links

NEAREST STATIONS:

- Slough (0.4 miles)
- Langley (2.3 miles)
- Windsor & Eton Riverside (1.8 miles) (South Western Railway)

The M4 (jct 6) is an easy commute, M40 is also easily accessible these both in turn provide access to the M25, M3 and Heathrow Airport. British Rail connections to Paddington are available from Burnham and Slough. Elizabeth Line stations of Slough and Langley are easily accessible plus Direct train lines into London Waterloo are available from Windsor & Eton Riverside station.

Floor Plan



Prospective purchasers should be aware that these sales particulars are intended as a general guide only and room sizes should not be relied upon for carpets or furnishing. We have not carried out any form of survey nor have we tested any appliance or services, mechanical or electrical. All maps are supplied by Goview.co.uk from Ordnance Survey mapping. Care has been taken in the preparation of these sales particulars, which are thought to be materially correct, although their accuracy is not guaranteed and they do not form part of any contract.

