



  
**Property Cafe**  
**BUYER INCENTIVE**  
AVAILABLE WHEN YOU VIEW  
THIS PROPERTY THROUGH US

Flat 2, 41 Collington Avenue, Bexhill-on-Sea,  
East Sussex, TN39 3PX

**£295,000**

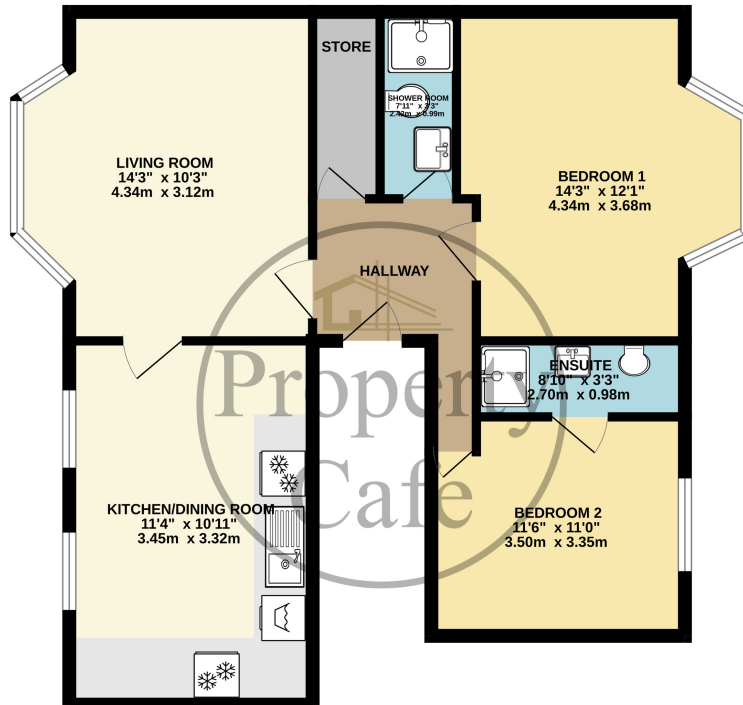


- Spacious First Floor Apartment
- Two Good Size Double Bedrooms
- Both With Modern En-Suite's
- Spacious Modern Kitchen-Diner
- Immaculate Decoration Throughout
- Lovely South Facing Aspects & Views
- Private Allocated Parking Space
- Long Lease & Share Of Freehold
- Immaculate Decor & Carpets
- (123 Year Lease : Plus Share Freehold)
- Sought After Collington Location
- Close To Shops & Mainline Station
- Sold With No Onward Chain
- Agents Note: Restricted To Holiday Lets Only





**1ST FLOOR FLAT**  
693 sq.ft. (64.4 sq.m.) approx.



COLLINGTON AVENUE - HP59

TOTAL FLOOR AREA : 693 sq.ft. (64.4 sq.m.) approx.

Whilst every attempt has been made to ensure the accuracy of the floorplan contained herein, measurements of doors, windows, rooms and any other items are approximate and no responsibility is taken for any error, omission or mis-statement. This plan is for illustrative purposes only and should be used as such by any prospective purchaser. The services, systems and appliances shown have not been tested and no guarantee as to their operability or efficiency can be given.

Made with Metropix C2024

