



ABC ALDERMARTIN
REAL ESTATE Baines & Cuthbert



Richfield Road,
Bushey. WD23 4LQ



£1,100,000

Freehold

This large family home sits on a plot which would make an ideal development, as it there is scope to either add a further home on the substantial grounds, or demolish it and build a block of flats.

Alternatively, the house as it stands offers generous living accommodation, and is offered in very good decorative order.

An early viewing is recommended, as the location is extremely popular, and the property itself is close to all of the areas many amenities and transport links.







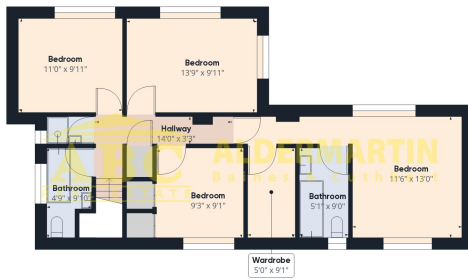
- DETACHED FAMILY HOME
- POTENTIAL FOR SUBSTANTIAL DEVELOPMENT
- BEAUTIFUL GARDENS

- FOUR BEDROOMS
- TWO BATHROOMS
- OFF STREET PARKING & GARAGE

- SITTING ON A LARGE PLOT
- QUIET LOCATION



Floor 0



Floor 1



Approximate total area⁰¹
1796.48 ft²

Excluding balconies and terraces

While every attempt has been made to ensure accuracy, all measurements are approximate, not to scale. This floor plan is for illustrative purposes only.

GIRAFFE360

Energy Efficiency Rating

	Current	Potential
<i>Very energy efficient - lower running costs</i>		
(92+) A		
(81-91) B		81
(69-80) C		
(55-68) D	66	
(39-54) E		
(21-38) F		
(1-20) G		
<i>Not energy efficient - higher running costs</i>		
England, Scotland & Wales		EU Directive 2002/91/EC

Edgware

02086 214 000

office@abcestates.co.uk