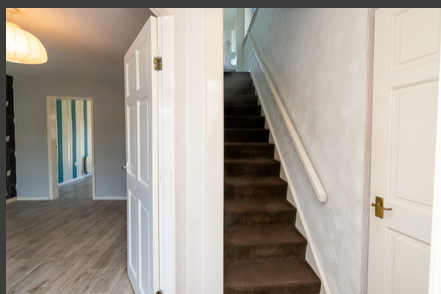


Hornby Crescent, Clock Face, £175,000

Offers Over



Spacious three bedroom semi detached property available with the added bonus of no onward chain. Occupying a large plot the property comprises entrance hallway with stair access, large living room, dining room, modern kitchen diner and third reception room.



x 3



x 1

See more of this house at [ashtons.net](https://www.ashtons.net)

