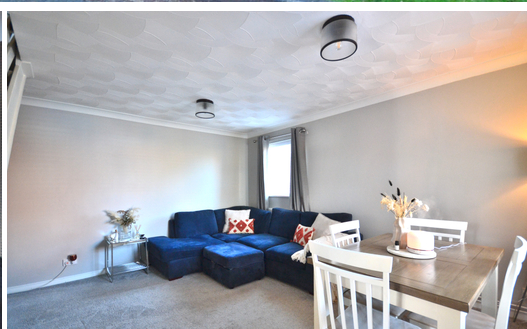




NEWSON & BUCK
ESTATE AGENTS



NEWSON & BUCK



14 Courtnell Place, King's Lynn, Norfolk PE30 4TW

£257,000

Beautiful presentation, three bedrooms and a desirable location makes this property a must see! Newson & Buck are proud to present to the market this beautifully finished three bedroom semi detached home situated in close proximity to the Queen Elizabeth Hospital in King's Lynn. The property comprises of an entrance porch, lounge, kitchen diner, three bedrooms and a bathroom. Further more there is an enclosed garden and a separate garage which can be used to store a vehicle or out door equipment. Viewing is highly essential for this beautiful home so please get in touch with our office today to arrange your appointment.

Lounge

14' 9" x 13' 9" (4.50m x 4.19m) Fitted carpet, two radiators, two double glazed windows, staircase to first floor.

Kitchen

10' 2" x 14' 9" (3.10m x 4.50m) Vinyl flooring, double glazed patio doors leading to rear garden, one double glazed window, fitted kitchen units, stainless steel sink, gas oven with hob and overhead extractor, space for washing machine, fridge freezer and dishwasher.

Landing

Fitted carpet, one radiator.

Bedroom One

7' 10" x 12' 2" (2.39m x 3.71m) Fitted carpet, one radiator, one double glazed window.

Bedroom Two

8' 3" x 10' 10" (2.51m x 3.30m) Fitted carpet, one radiator, one double glazed window.

Bedroom Three

6' 3" x 7' 6" (1.91m x 2.29m) Fitted carpet, one radiator, one double glazed window.

Bathroom

Bathtub with shower attachment, sink, low flush w/c, one double glazed window, cupboard space.

Rear Garden

Enclosed rear garden with patio area and rear BBQ area

Garage

Up and over front door, fitted electrics and lighting, parking to the front.

EPC - C

Council Tax Band B



GROUND FLOOR

1ST FLOOR



While every effort has been made to ensure the accuracy of the description contained here, measurements of doors, windows, rooms and any other items are approximate and no responsibility is taken for any error, omission or misstatement. This plan is for illustrative purposes only and should be used as such by any prospective purchaser. The services, systems and appliances shown have not been tested and no guarantee as to their operability or efficiency can be given.
Made Web 10/05/2022